



# Counseling Annual Report 2020

University of Nebraska – Omaha College of  
Education

## ITEM 1

### MISSION AND VALUE STATEMENT DEPARTMENTAL ORGANIZATIONAL CHART

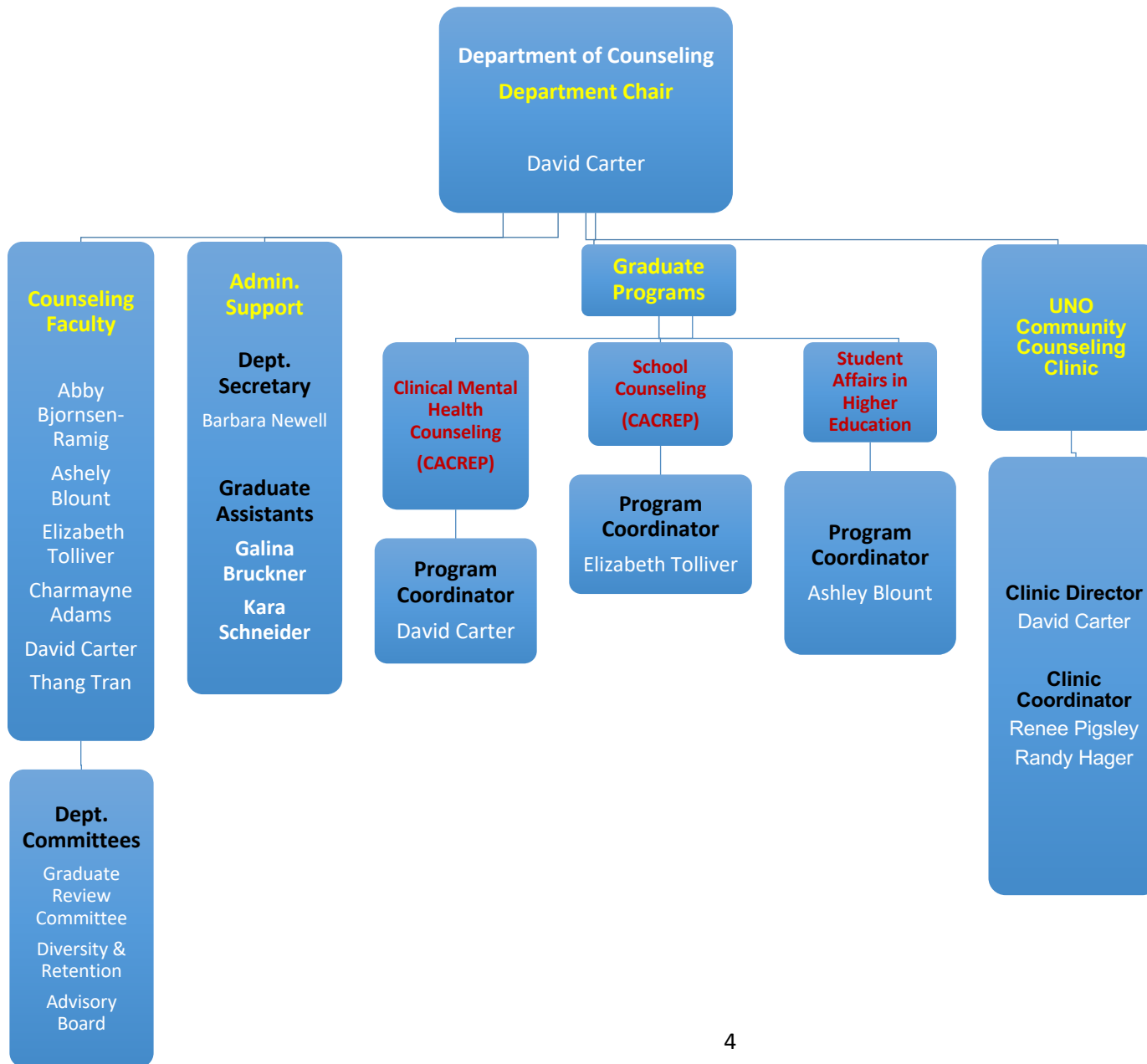
#### **Unit Mission Statement:** (Graduate)

The mission of the UNO Counseling Department is to provide high quality academic and clinical preparation leading to eligibility for licensure and certification as professional counselors. Through a rigorous, evidence-based curriculum designed to train critical thinkers and reflective practitioners, candidates are prepared to work with diverse clients across multiple professional settings and engage and remain active as advocates and future leaders within and for the counseling profession and those we serve.

#### **Unit Value Statement:**

The Department of Counseling provides a student-centered, wellness-oriented curriculum that focused on the development of ethical, competent, and reflective counseling practitioners in the Clinical Mental Health (CMH), School Counseling (SC), and Student Affairs in Higher Education (SAHE). Graduates are prepared to sit for all state and national licensure and certification exams in their respective areas. Employment opportunities for graduates is excellent, with graduates finding employment in public and private clinical settings (CMH), in critical shortage areas in the public school systems (SC), and across public and private higher education institutions (SAHE). The Counseling Department also routinely sees graduates matriculate on to doctoral programs in Counselor Education, Counseling/Clinical Psychology, and Students Affairs/Higher Education Administration.

## Departmental of Counseling Organizational Chart





**ITEM 2  
ENROLLMENT**

**Graduate Enrollment**

*Ethnicity (Required)	2016		2017		2018		2019		2020	
	Total		Total		Total		Total		Total	
	#	%	#	%	#	%	#	%	#	%
Caucasian/White	130	81.76%	157	82.63%	145	76.72%	141	77.0%	93	71%
Black/African American	6	3.77%	8	4.21%	4	2.12%	7	3.8%	10	8%
Hispanic	12	7.55%	13	6.84%	21	11.11%	19	10.4%	13	10%
Asian	4	2.52%	1	0.53%	3	1.59%	1	0.5%	2	1%
American Indian		0.00%		0.00%		0.00%		0.0%	1	1%
Native Hawaiian/Pac Islander		0.00%		0.00%		0.00%		0.0%	1	1%
Two or More Races	4	2.52%	5	2.63%	8	4.23%	9	4.9%	8	6%
Not Specified		0.00%		0.00%		0.00%		0.0%	0	0.0%
Unknown	2	1.26%	3	1.58%	4	2.12%	2	1.1%	1	1%
Nonresident Alien	1	0.63%	3		4	2.12%	4	2.2%	2	1%
<b>Total</b>	<b>178</b>	<b>100%</b>	<b>190</b>	<b>100%</b>	<b>189</b>	<b>100%</b>	<b>183</b>	<b>100%</b>	<b>131</b>	<b>100%</b>

*Gender (Required)	2016		2017		2018		2019		2020	
	Total		Total		Total		Total		Total	
	#	%	#	%	#	%	#	%	#	%
Female	125	78.62%	141	74.21%	143	75.66%	135	73.8%	94	72%
Male	34	21.38%	49	25.79%	46	24.34%	48	26.2%	37	28%
<b>Total</b>	<b>159</b>	<b>100%</b>	<b>190</b>	<b>100%</b>	<b>189</b>	<b>100%</b>	<b>183</b>	<b>100%</b>	<b>131</b>	<b>100%</b>



**Advanced Program Enrollments by Concentration & Degree**

*Code	Degrees	Degree	2015	2016	2017	2018	2019	2020
		<b>**M.A. eliminated for 2018</b>						
	Clinical Mental Health	M.S.	81	90	109 (105)	107	121	132
	Clinical Mental Health	M.A.	19	24	31 (23)	17	----	----
	Community Counseling	M.S.			(4)	2	----	----
	School Counseling	M.S.	43	46	54 (48)	52	45	42
	School Counseling	M.A.	1	1	1 (1)	2	---	---
	Student Affairs in Higher Ed.	M.S.	8	17	17 (12)	9	10	6
	Student Affairs in Higher Ed.	M.A.	0	0	0	-	---	---
	<b>Total</b>		134	159	212 <b>(190)</b>	189	183	180

**Advanced Program Completers**

*Code	Concentrations	Degree	2015	2016	2017	2018	2019	2020
	Clinical Mental Health Counseling	M.S.	10	16	18	20	37	58
	Clinical Mental Health Counseling	M.A.	2	1	1	---	---	---
	School Counseling	M.S.	18	9	13	13	12	17
	School Counseling	M.A.	0	0	0	--		---
	Student Affairs in Higher Education	M.S.	1	4	2	6	5	3
	Student Affairs in Higher Education	M.A.	0	0	0	--		---



	<b>Total</b>		31	30	33	39	54	78
--	--------------	--	----	----	----	----	----	----

**Analysis**

Analysis of the year is very difficult due to the disruption of the educational system due to COVID. Enrollments held steady and students graduated on time with an increase in graduating students due to the overall larger enrollments, however the number of students applying entering the program declined.

## ITEM 3

### ACADEMIC PROGRAM INFORMATION

The UNO Department of Counseling offers the Masters of Science (M.S) in three concentration areas:

1. Clinical Mental Health Counseling (CMHC)
2. School Counseling (SC)
3. Student Affairs in Higher Education

#### **Department of Counseling Program Assessment, Improvement, and Development**

The department utilizes a programmatic assessment plan for assessing student learning outcomes and, by extension, program improvement and development. updating and improving the clinical mental health. In addition to each faculty member's ongoing review of their respective course(s), all course instructors complete a "course level assessment" using assessment data from their course rubrics and student evaluations following the conclusion of each course through VIA, the department's dedicated assessment platform. Based on this data, and their own experiences in the course, instructors provide analysis of the course, including key insights and suggestions relative to course development and/or improvement.

#### **CLINICAL MENTAL HEALTH COUNSELING (CMHC)**

##### **Degree Offerings**

60 credit M.S. in Counseling with a concentration in CMHC (CACREP, 2009)

66 credit M.S. in Counseling with a concentration in CMHC (thesis option) (CACREP, 2009)

##### **Program Description**

The 60 credit M.S. degree with a concentration in CMHC includes the coursework and field experiences (practicum/internships) required for licensure as a mental health professional in Nebraska. Students who complete two additional elective courses (COUN 8686 & COUN 8696) will also have completed the academic requirements for provisional licensure in the area of Alcohol and Drug Counseling (LADC) in Nebraska.

The department offers a 66 credit M.S. with thesis option. Students must gain faculty approval to complete a thesis and complete 6 additional credits.

### **CMHC Accreditation**

Council for the Accreditation of Counseling and Related Programs (CACREP, 2009)

## **School Counseling (SC)**

### **Degree Offerings**

48 credit M.S. in Counseling with a concentration in SC (CACREP)

54 credit M.S. in Counseling with a concentration in SC (Thesis Option; CACREP)

60 credit M.S. in Counseling with a concentration in SC (CACREP; Non-education majors)

66 credit M.S. in Counseling with a concentration in SC (CACREP; Thesis Option; Non-edu majors)

### **Program Description**

#### ***School Counseling Concentration***

The M.S. in counseling with a concentration in school counseling (48, 54, 60 credit programs of study) include the coursework and field experiences (practicum/internship) require for licensure as a school counselor in Nebraska.

Additionally, the UNO Counseling Department has committed to aligning the SC programs with CAEP-Accreditation as added incentive to foster “best practices” across the SC curriculum and increase the department’s ability to attract top students from the Omaha metro and across Nebraska in the increasingly competitive school counseling marketplace in Nebraska.

#### ***School Counseling Concentration (“Alternative Endorsement”)***

The Nebraska Department of Education instituted the Alternative School Counseling Endorsement (ASCE) in 2017, which eliminated the two-year teaching requirement for those without a valid teaching endorsement in NE or degree in education. In response, the UNO Counseling Department, in collaboration with the UNO Teacher Education Department and Nebraska Department of Education, designed coursework for individuals without teaching certification and/or undergraduate degree in education that allows SC graduates to gain employment as school counselors in Nebraska. This degree plan involves a 60 credit plan of study (66 if a thesis option is added).

Completion of a M.S. in Counseling with a concentration in School Counseling under the alternative endorsement requires an additional 4 courses/12 credits (2 required/2 electives) for a total of 60 credits. Students completing the ASCE courses may also choose the M.S. with the thesis option, which requires an additional 6 credit hours (66 total credit hours). The additional ASCE coursework was developed in collaboration with the COE's Teacher Education Department and Nebraska Department of Education. These changes are noted below:

**Accreditation:**

Council for the Accreditation of Counseling and Related Academic Programs (CACREP, 2009)  
Council for the Accreditation of Educator Preparation (CAEP) (conceptualization stage)  
**Student Affairs in Higher Education (SAHE)**

**Degree Offerings**

38 Credit M.S. in Counseling with a concentration in SAHE  
44 Credit M.S. in Counseling with a concentration in SAHE (Thesis Option)

**Program Description**

The UNO Counseling Department completed a revision of the SAHE program in Fall 2019. The M.S. in SAHE was revised to 38 credits (44 with thesis option) and transitioned to a fully online curriculum. In addition to following a cohort model (fall admission only), the SAHE curriculum reflects a more intentionally focus on content and experiences directed at students seeking positions in the fast-growing market for postsecondary personnel and administrators.

### **Accreditation**

N/A

### **Program Updates and Improvements**

The UNO Counseling Department completed a revision of the SAHE program in Fall 2019. The M.S. in SAHE was revised to 38 credits (44 with thesis option) and transitioned to a fully online curriculum. In addition to following a cohort model (fall admission only), the SAHE curriculum reflects a more intentionally focus on content and experiences directed at students seeking positions in the fast-growing market for postsecondary personnel and administrators.

**ITEM 4  
COMPLETION IMPERATIVE**

Department of Counseling	Completers				Average Years To Degree			
Concentration Areas	2017	2018	2019	2020	2017	2018	2019	2020
Clinical Mental Health Counseling	23*	33*	40*	41	2.9*	3.1*	2.5*	Na
School Counseling	13	16	13	17	3.8	3.7	3.6	Na
Student Affairs in Higher Education	7	6	5	3	2.9	2.6	2.1	na

\*Includes OIA data using M.A degree. Due to termination of degree in 2019, data for the 3yr average years to degree of the CMHC M.A degree is unreliable.

**ITEM 5  
FULL-TIME FACULTY INFORMATION**

Name	Degree & Field <sup>1</sup>	Rank <sup>2</sup>	Tenure Status		Grad Fac	Race/Ethn <sup>3</sup>	Gend	Teaching Assignment & Level			
			Tenure Track	Tenured				T/P/S <sup>4</sup>	G (only)	UG (only)	G/UG
Dan Kissinger	Ph.D. Counselor Education	Associate Professor		X	X	1	M	S	X		
David Carter	Ph.D. Education	Professor		X	X	1	M	S	X		
Charmayne Adams	Ph.D. Counselor Education	Assistant Professor	X		X	2	F	S	X		

Abby Bjornsen-Ramig	Ph.D. Counseling Psychology	Associate Professor		X	X	1	F	S	X		
Elizabeth Tolliver	Ph.D. Counselor Education	Assistant Professor	X		X	1	F	S	X		
Ashley Blount	Ph.D. Counselor Education	Instructor				1	F				X

**KEY**

<p>1 = Highest degree earned  2 Instructor  Post-doctorate  Assistant Professor  Associate Professor  Professor</p>	<p>4 T= teaching EDUC, methods  P = teaching professional courses for other school professionals  S = supervising student teaching/practicum/internship</p>
<p>3 1 = Caucasian/White  2 = African American/Black  3 = Hispanic  4 = Asian/Pacific Islander  5 = Indian/Alaskan  6 = No response</p>	

ITEM 5B

PART-TIME FACULTY INFORMATION

Name	Degree & Field <sup>1</sup>	Rank <sup>2</sup>	Tenure Status		Grad Fac	Race/Ethn <sup>3</sup>	Gend	Teaching Assignment & Level			
			Tenure Track	Tenured				T/P/S <sup>4</sup>	G (only)	UG (only)	G/UG
Baerentzen, Mogens	Ph.D. Psychology (Rehabilitation Counseling Education)	Instructor				1			X		
Byrd, Tyler	M.S. Community Counseling	Instructor				1			X		
Connelly, James	Ph.D. Counselor Education and Supervision	Instructor				1			X		
Echtemkamp, Teresa	M.S. Community Counseling	Instructor				1			X		
Gray, Alexander	M.S. Counseling	Instructor				1			X		
Handke-Belieu, Molly	Doctor of Philosophy in Educational Administration, Educational Studies	Instructor				1			X		



Hron, Timothy	M.A. Community Counseling	Instructor				1			X		
Lindburg, Jaclyn	Ph.D. Higher Education Administration	Instructor				1			X		
McGeary, Corey	M.S. Community Counseling	Instructor				1					X
Cathy Schweitzer	M.S. Community Counseling	Instructor				1			X		
Myers, Carl Raymond	M.S. Guidance and Counseling	Instructor				1			X		
Richards, Clyde (Rick)	M.S. School Counseling; Secondary Counseling Endorsement	Instructor				1			X		
Ricketts, William	M.S. Counselor Education	Instructor				1					X
Schettler, Loel	M.S. Counseling	Instructor				1			X		
Sudbeck, Nathan	Doctor of Clinical Psychology	Instructor				1			X		

Tran, Thang	M.S. School Counseling	Instructor				Asian			X		
Tyler, Patrick	Doctor of Philosophy in Educational Studies	Instructor				1			X		

**KEY**

<p>1 = Highest degree earned  2 Instructor  Post-doctorate  Assistant Professor  Associate Professor  Professor</p>	<p>4 T= teaching EDUC, methods  P = teaching professional courses for other school professionals  S = supervising student teaching/practicum/internship</p>
<p>3 1 = Caucasian/White  2 = African American/Black  3 = Hispanic  4 = Asian/Pacific Islander  5 = Indian/Alaskan  6 = No response</p>	

