

SINGLE STREAM RECYCLING

Single Stream Recycling (SSR) is the process of collecting everyday plastic, aluminum, and paper recycling in one container. This eliminates the need to sort the materials, making it easier and more user-friendly to recycle.

Omaha's SSR program accepts almost all kinds of paper and metal, along with a selection of plastic items. **This guide provides examples of items accepted in the SSR program.** For a more complete list of all items accepted by Omaha's SSR program, visit

- First Star Recycling
<http://firststarrecycling.com/recycle-guide/>
- Omaha's Waste Wasteline
<http://wasteline.org/recycling-information/>

While not all recyclable materials are accepted in Omaha's SSR program, there are methods of recycling those items in Omaha.

- Glass: There are a number of drop off locations in the area to recycle glass. For a list of locations, visit <http://wasteline.org/recycling-information/recycling-drop-off-locations/>
- Plastic Bags: Numerous retailers, such as Hy-Vee and Target, have drop boxes for plastic bags and film. To find the nearest location, visit <https://www.plasticfilmrecycling.org/recycling-bags-and-wraps/find-drop-off-location/>
- Other Recyclables: For a list of how and where to recycle other items, such as batteries, eyeglasses, and clothing, visit <http://www.keepomahabeautiful.org/resources/recycling-reuse-guide.html>

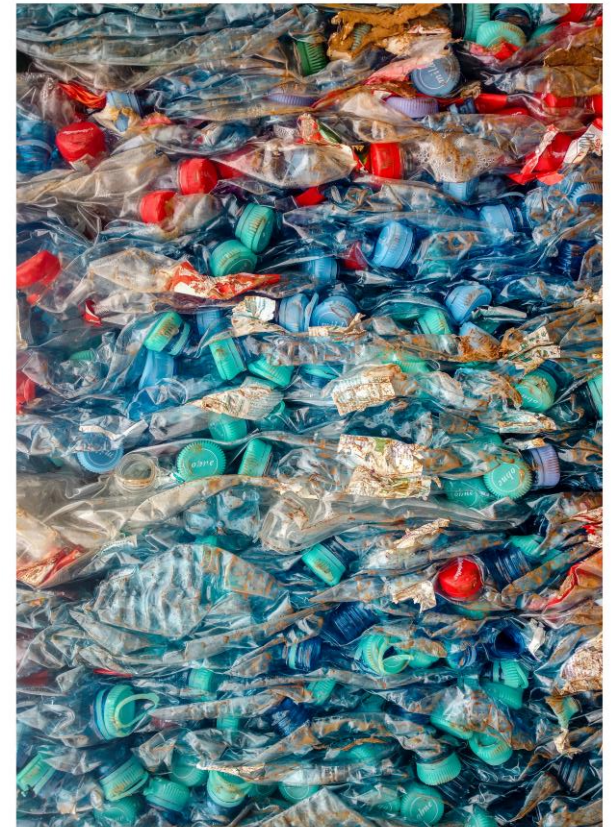
OFFICE OF SUSTAINABILITY
University of Nebraska at Omaha
6001 Dodge Street
Omaha, NE 68182
unomaha.edu/sustainability



The University of Nebraska does not discriminate based on race, color, ethnicity, national origin, sex, pregnancy, sexual orientation, gender identity, religion, disability, age, genetic information, veteran status, marital status, and/or political affiliation in its programs, activities, or employment. UNO is an AA/EEO/ADA institution. For questions, accommodations, or assistance please call/contact the Title IX/ADA/504 Coordinator (phone: 402.554.3490 or TTY 402.554.2978 or the Accessibility Services Center (phone: 402.554.2872), UCTEMP0718

RECYCLING BASICS

Dodge & Scott Residence
Halls



PAPER



Rule of Thumb

If you can tear it, it can be recycled!

In Omaha, SSR collects almost all clean paper, including but not limited to:

- Magazines/Catalogues
- Newspapers
- Mail
- Phonebooks
- Paperback Books
- Shoe Boxes
- All Cardboard
- Office Paper
- Colored Paper
- Notebook Paper
- Envelopes
- Paper Bag
- Wrapping Paper
- Detergent Boxes
- Soda Boxes
- Cereal Boxes
- Paper Egg Cartons
- Juice Boxes
- Milk Cartons
- Juice Cartons
- Soup Boxes
- Pizza Boxes



The 5% Rule

While food and liquids can contaminate recyclables, you do not have to rinse your recyclables before putting them into the bin. The accepted amount of food/liquid in the recycling is 5% of the total volume.



Rule of Thumb

Make sure containers are as empty and dry as is reasonable before recycling.

METAL

In Omaha, SSR accepts aluminum & steel (tin) cans.



Rule of Thumb

Labels, lids, & tabs can be left on cans!

Items accepted include, but are not limited to:

- Food Cans
- Beverage Cans
- Aluminum Bottles
- Tin Cans
- Steel Cans



STOP! NOT FOR SSR

The following items should not be put into the recycling bins around campus and should either be placed in the landfill bins or taken to a drop location in Omaha.

- Glass
- Hardbound Books
- Styrofoam
- Plastic Bags
- Food
- Rubber Bands
- Tissue Paper
- Paper Towels

Additionally, some of UNO Food Services containers (EcoProducts®) are compostable, not recyclable. These items should be placed in the landfill bins.

The Office of Sustainability is working to find appropriate waste streams for items currently not recycled on campus; including composting, household battery recycling, and other recycling programs.

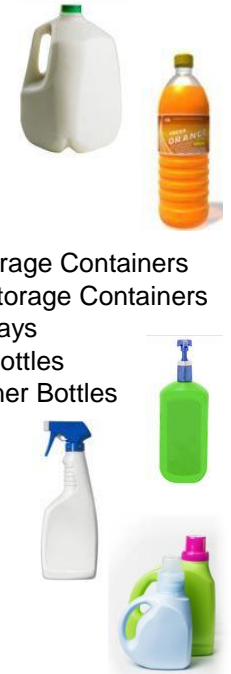
PLASTIC

In Omaha, SSR accepts plastic bottles, cups, caps, lids, food containers, and packaging with the numbers:



Items accepted include, but are not limited to:

- Water Bottles
- Soda Bottles
- Cooking Oil Bottles
- Milk Jugs
- Food Containers
- Juice Bottles
- Cookie Trays
- Reusable Food Storage Containers
- Disposable Food Storage Containers
- Microwave Meal Trays
- Cleaning Product Bottles
- Shampoo/Conditioner Bottles
- Mouthwash Bottles
- Body Wash Bottles
- Lotion Bottles
- Detergent Bottles
- Spray Bottles
- Soap Dispensers
- DVD/CD Cases
- Planting Pots



Rule of Thumb

To save space in the recycling bin, flatten plastic bottles!