

Things to know

Annual enrollment online at Firefly -
Employee Self-Service begins

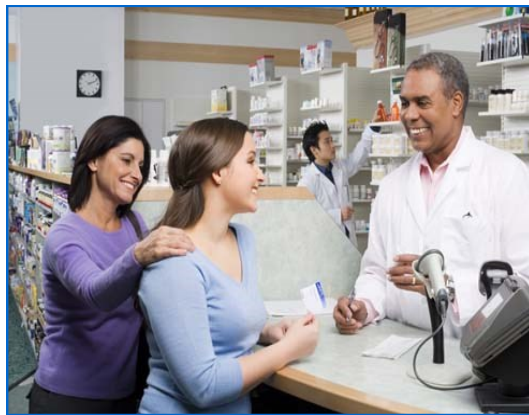
October 30 and ends

November 17.

You must complete the HRA during this period.

The HRA survey must be completed
EACH YEAR.

The confirmation Page **MUST BE PRINTED and saved for your own records (or save the confirmation email).**



UNIVERSITY OF
Nebraska
Omaha

Human Resources

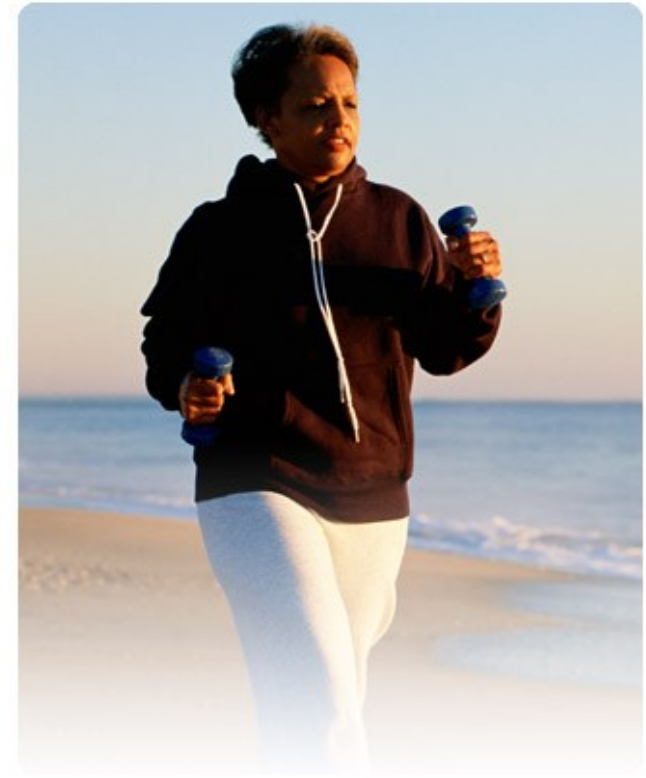
6001 Dodge St.
EAB 205
Omaha, NE 68182

Phone: 402-554-3660

E-mail:
escarpello@unomaha.edu

The University of Nebraska does not discriminate based on race, color, ethnicity, national origin, sex, pregnancy, sexual orientation, gender identity, relation, disability, age, genetic information, veteran status, marital status, and/or political affiliation in its programs, activities, or employment.

Health Risk Assessment



Personal Wellness Report
Enhanced Benefits
Confidential & Voluntary

HRA Program



All active (benefits eligible) employees, retirees, and ancillary insureds will have the opportunity to complete the HRA starting on **Monday, October 30, 2017**



You must complete the HRA by the 2018 NUFlex deadline of **Friday, November 17, 2017.**



Participation is voluntary; however, by completing this short survey, you will receive a personal health summary that will help you assess and monitor your personal health status.

You will receive a confirmation email following your successful completion of the HRA survey. The confirmation will be sent to the email address you provide when completing the survey. We still recommend you print or save the HRA report, but the email will be your proof that you completed the assessment.

Employees who are enrolled in the university's Blue Cross Blue Shield medical plan and complete the HRA will also be eligible for enhanced wellness and preventive care benefits for themselves as well as their covered family members.

Enhanced Benefits

1. Annual preventive care allowance raised from \$250 to \$300 (for insureds age 2 and over)
+
 2. Dependent child (under age 2) preventive care allowance raised from \$500 to \$600
+
 3. 100% coverage for routine preventive colonoscopy once every 10 years starting at age 50 (services must be provided by a Blue Cross Blue Shield PPO Provider)
+
 4. \$0 copay for generic prescription drugs through CVS Caremark's mail service
- For you and your dependents for having completed the HRA for yourself.

