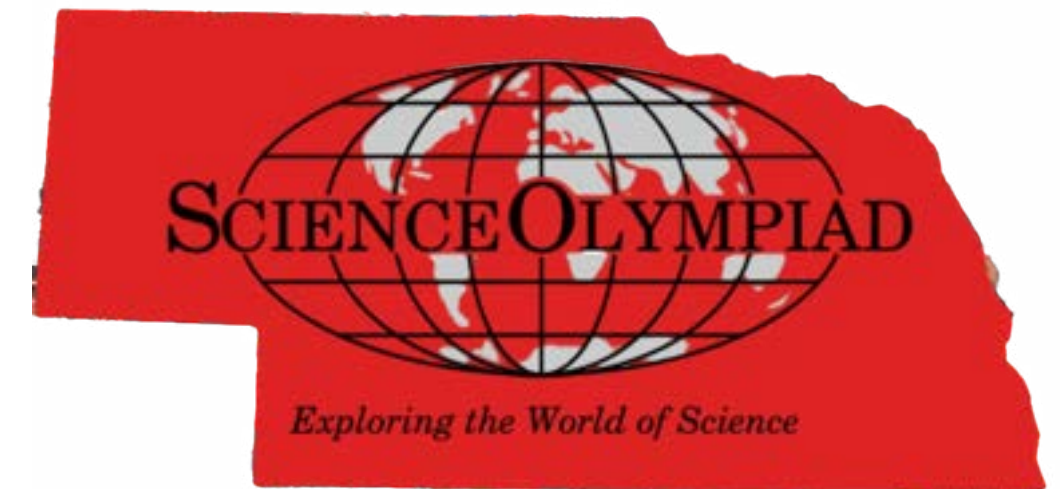


# Coaching a Nebraska Science Olympiad Team



Help Us Inspire the Next Generation of Science !

With Deanna Johansen  
Nebraska State Director  
2025-2026 Season



# A Year at a Glance

## FALL

- Recruit and Create Your Team (Rules)
- Download the New Event Rule Book(s)
- Investigate Events, Learn What's New, Choose Partners and Get to Work
- Register for State and National Membership.
- Register for an Invitational/Check Events
- Check the State Tournament Schedule of Events for Conflicts with Your Team & Make Adjustments.
- Reserve Transportation for Nebraska Events (Hotels if needed)



## SPRING

- Narrow Down your Events/Partners and Revisit Event Rules with students
- Register for an Invitational - its Not Too Late
- Review the Science Olympiad Policies
- Complete the Coach Agreement Form (once a year for all tournaments.)
- Complete the Team Roster Form (one for every tournament you attend.)
- Compete at an Invitational and Discuss/Recap with Students
- Register for the State Tournament
- Assign Students to State Events
- GO TO STATE!



## Recruit and Create Your Team - Team Rules



- Each school can bring one Division B Team (Middle School grades 6-9) and one Division C Team (High School grades 9-12) to the State Tournament.
- Each team must register for State and National Science Olympiad membership at \$150 per team. (\$75 for state membership and \$75 for national membership.)
- Each team is composed of **15 students or less from one school (in each of the two divisions if you have both Div B and Div C.)**
- Each team can have up to **5 alternate competitors**. *Alternates can fill in for absent team members. Otherwise, alternate competitors may only compete in trial events at the state tournament.*
- No teacher/coach may supervise more than one team. *Please bring a coach or supervisor for each team. (This can be a parent.)*



## Recruit and Create Your Team - Team Rules cont.



- Some invitational tournaments may allow you to bring a second B Team or C Team for exhibition only (which means they are not a competitive team.) In this case, the second team only needs to pay the national membership fee of \$75.
- Division B teams may have a maximum of (5) 9th graders. Middle schools may invite five (5) of their last year's eighth grade students to be part of a team.
- Division C teams may have a maximum of seven (7) seniors.





# Download the New Event Rule Book(s)



- 5 - 8 Events change in each division each year
- Usually on a rotation, but new ones are added sometimes as well.
- Several Types of Events
  - Test Events (Knowledge)
  - Test and Lab Events
  - Test and Hands-On Events
  - Build Events (Devise Testing)

[Download the NEW Event Rules Here](#)



# Download the New Rule book



## Categories of Events

### 2026 EVENT SLATE

#### Division B

Life, Personal & Social Science	Earth & Space Science	Physical Science & Chemistry
Anatomy & Physiology <i>(Nervous, Sense Organs, Endocrine)</i> Disease Detectives Entomology Heredity Water Quality <i>(Fresh Water)</i>	Dynamic Planet <i>(Oceanography)</i> Meteorology <i>(World Climate and Climate Change)</i> Remote Sensing Rocks and Minerals Solar System	Hovercraft Circuit Lab Machines Crime Busters Potions and Poisons
Technology & Engineering Design	Inquiry & Nature of Science	Featured Trial Events
Boomilever Helicopter Mission Possible Scrambler	Codebusters Experimental Design Metric Mastery Write It, Do It	Aerial Scramble Agricultural Science Botany Ping Pong Parachute

### 2026 EVENT SLATE

#### Division C

Life, Personal & Social Science	Earth & Space Science	Physical Science & Chemistry
Anatomy & Physiology <i>(Nervous, Sense Organs, Endocrine)</i> Designer Genes Disease Detectives Entomology Water Quality <i>(Fresh Water)</i>	Astronomy Dynamic Planet <i>(Oceanography)</i> Remote Sensing Rocks and Minerals	Circuit Lab Hovercraft Machines Chemistry Lab <i>(Kinetics and Chemical Reactions/Stoichiometry)</i> Forensics Materials Science <i>(Nanomaterials)</i>
Technology & Engineering Design	Inquiry & Nature of Science	Featured Trial Events
Boomilever Electric Vehicle Helicopter Robot Tour	Codebusters Experimental Design Bungee Drop Engineering CAD	Aerial Scramble Agricultural Science Botany Ping Pong Parachute Protein Modeling C



# Other Rules to be Aware of

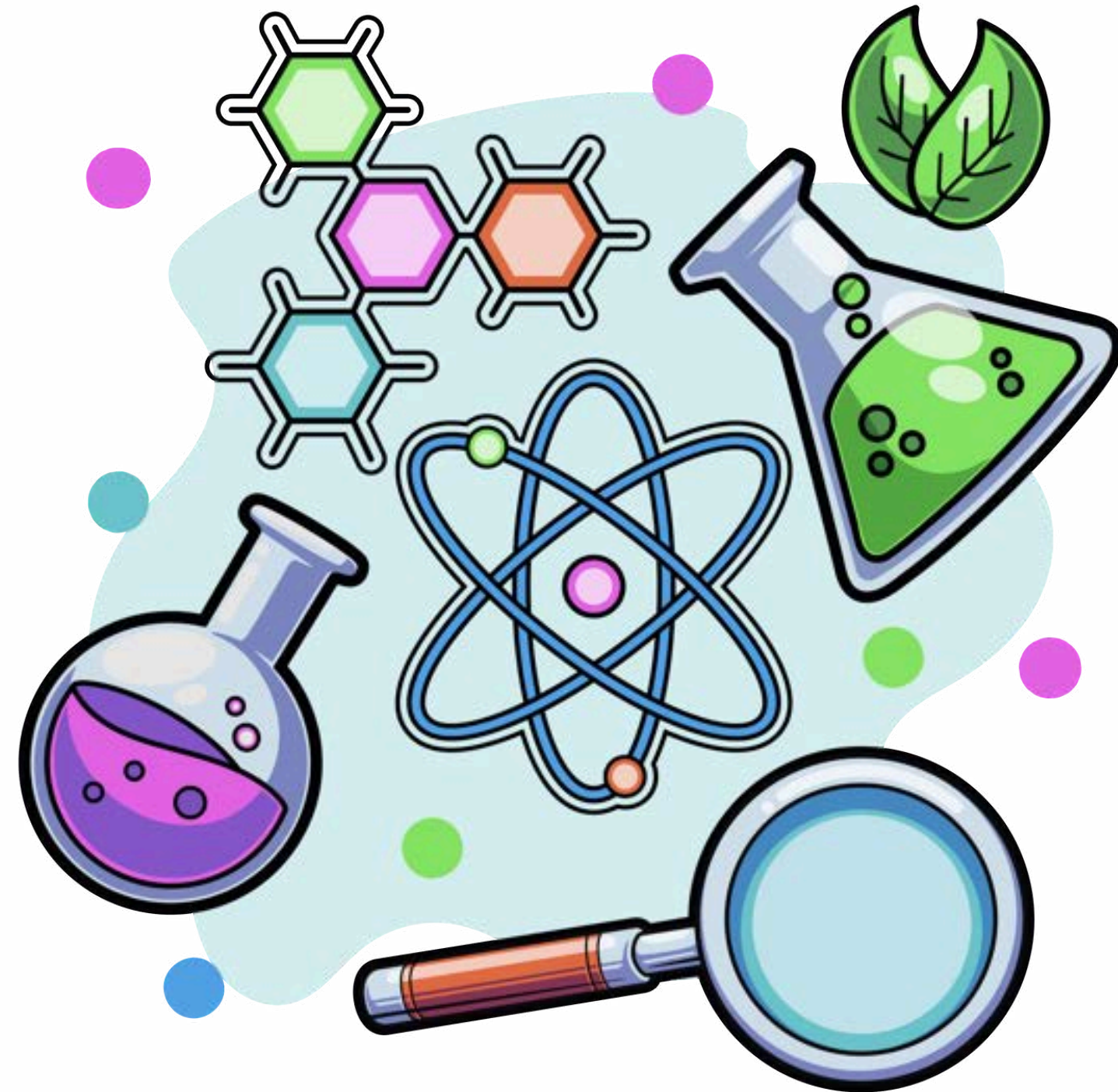


Lab Equipment Rules

Eye Protection Rules

Calculators Class Description

Additional Policies



# **Investigate Events, Learn What's New, Choose Partners and Get to Work!**



- You have downloaded the rules. Share them with the students and have them start investigating...
- Students should choose some events and find partners. (They may have different partners for each event. 1 or 2 events might have 3 on a team.)
- Students can choose up to 4 events to compete in at State - this might be different for invitationals and invitationals may not run all 23 events.
- For TEST events, they can study with books or the internet and then have them search for tests that other schools have posted online for practice.
- For BUILD events, have them start looking up YouTube videos for build tips and tricks and to see the device testing in action.
- Common website for event information and help [Scioly.org](https://www.scioly.org)



# Register for State and National Membership



- This membership fee is paid once a year by all teams and allows the team to compete in any invitational tournament and the state tournament for that year. (There may also be additional fees to attend invitational tournaments.)
- \$150 for team of up to 15 students and 5 alternates.
- \$75 for exhibition teams - which can only attend Invitationals, not State.

## Pay for Nebraska Membership

- Fill out the online form for each team.
- Pay by credit card online or mail a check to UNO.



# Register for an Invitational/Check Events



## 2026 Nebraska Invitationals

**March 17 : Kearney Invitational, University of Kearney, Kearney NE**

**March 21 : Millard North Invitational, Millard North HS, Omaha, NE**

**April 8 : Ogallala Invitational, Keith County Fairgrounds, Ogallala NE**

- **Register through the Invitational's Website.**
- **Check the event lists - they will not run all 23 events.**
- **Your team can go to more than one Invitational.**
- **Be prepared to be asked to prepare and run an event.**

**More information and current links on the Nebraska Website**



# **Check the State Tournament Schedule of Events for Conflicts with Your Team & Make Adjustments.**

- **All 23 events along with 6 Trial Events will be Run at the State Tournament.**
- **All teams are welcome to the State Tournament regardless of how or what invitationals they attended.**
- **Check the State Schedule as soon as it comes out so that you and your student know what conflicts they may have with the events they choose.**

**You can find the schedules on the  
website under Documents for Coaches**



# **Reserve Transportation for Nebraska Events (Hotels if needed)**



**Maybe it is still fall...but**

- It might be a good time to book transportations for the tournaments.**
- If you need hotel rooms for the state tournament, watch for some dissounted blocked rooms on the State Tournament website.**

Enjoy Your Winter Break!



Happy Holidays!



2026

## **Narrow Down your Events/Partners and Revisit Event Rules With Students**

- **It's time to check in with each student/pair and make sure they understand the rules in their events. Every event is different.**
- **Check their lab notes or get them started on lab notes.**
- **Do they need goggles, calculators, etc.**
- **What can you do to keep them motivated?**
- **Consider a practice run perhaps.**
- **Assign jobs to students - give them ownership.**





# **Register for an Invitational - its Not Too Late!!**

**2026**

**March 17 : Kearney Invitational, University of Kearney, Kearney NE**  
**March 21 : Millard North Invitational, Millard North HS, Omaha, NE**  
**April 8 : Ogallala Invitational, Keith County Fairgrounds, Ogallala NE**

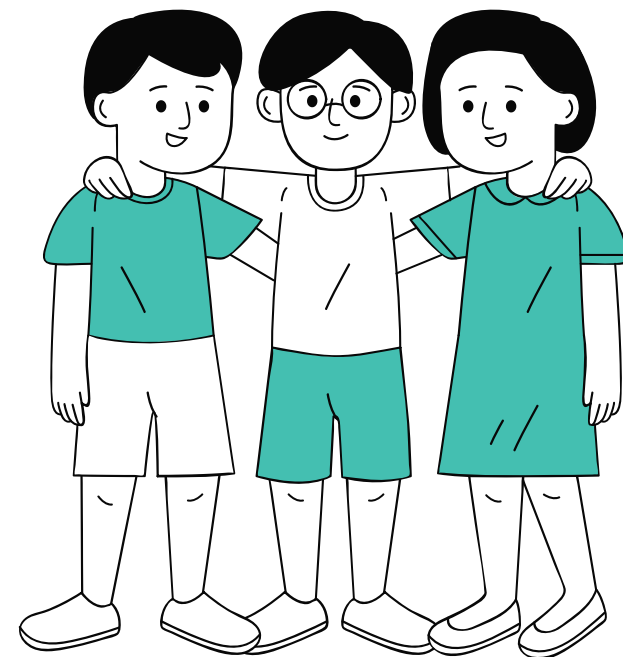
- **Check Event lists - they will not run all 23 events.**
- **Your team can go to more than one Invitational.**
- **Pay state and national Membership fee**
- **Register for invitational and pay its fee.**



**More information and current links on the Nebraska Website**

# Complete the Coach Agreement Form

2026



## Coach Agreement Form

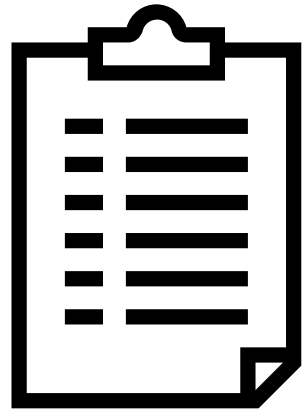


**This form only needs to be completed  
ONCE for all 2026 Tournaments**

**PLEASE find a way to share the contents of this form with your students so that they are aware of the expectations for tournament rules and behavior. I'd suggest having them sign a similar agreement form with you.**

# **Complete the Team Roster Form** **(one for every tournament you attend.)**

2026

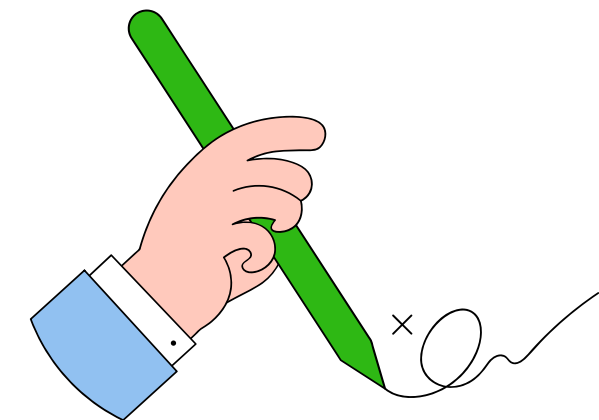


**Team Roster Form**



**This form needs to be completed for each tournament you attend.**

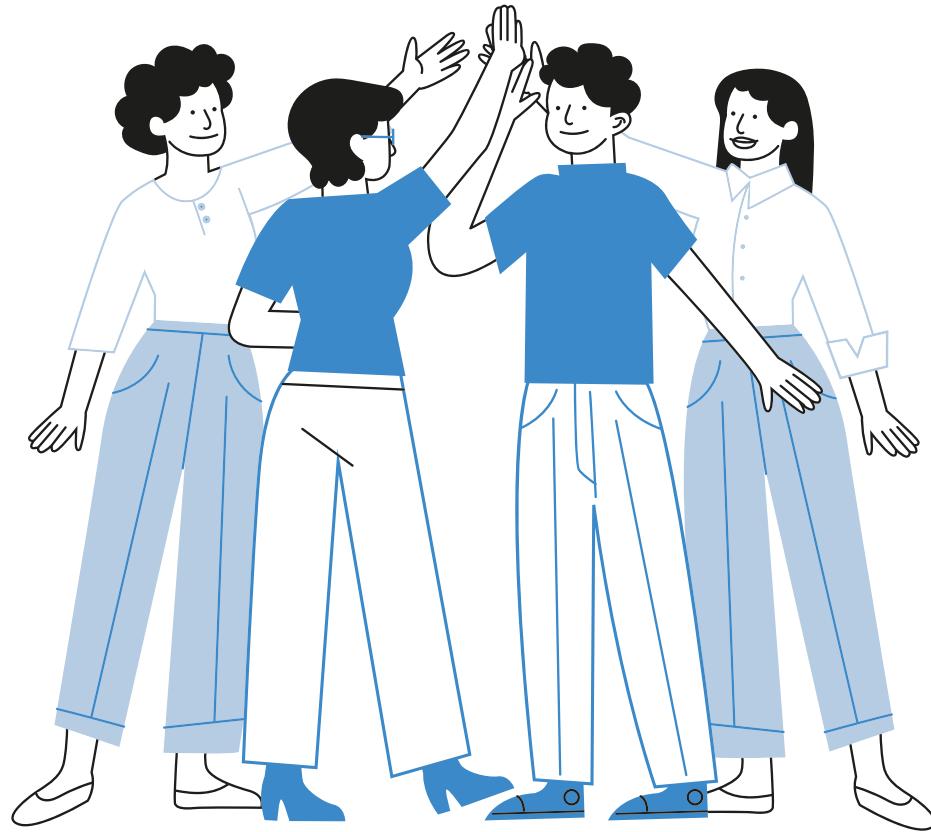
**Fill it out, print it off, have your principal sign it, and take it with you to the tournament where it will be turned in.**





# Compete at an Nebraska Invitational and Discuss/Recap with Students

2026



The **MORE**  
you **REFLECT**  
the **MORE**  
you **LEARN**

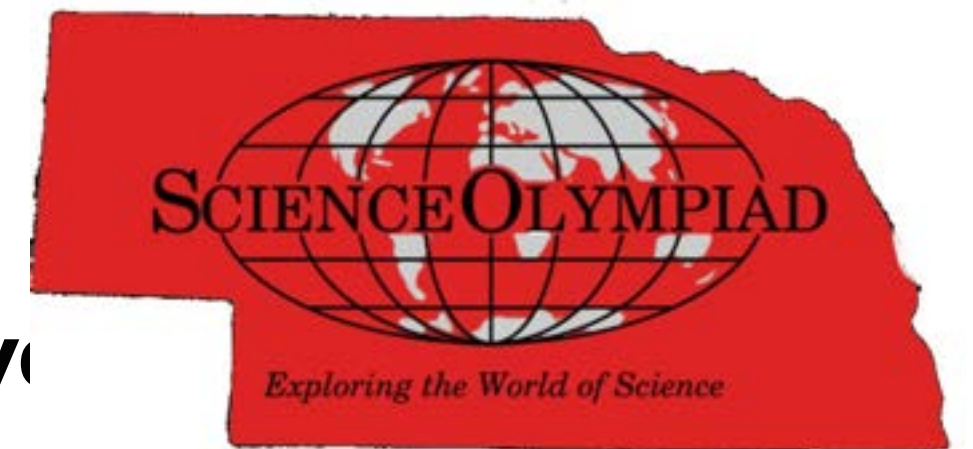
# Register for the State Tournament

2026

**[nesoinc.org](https://nesoinc.org)**

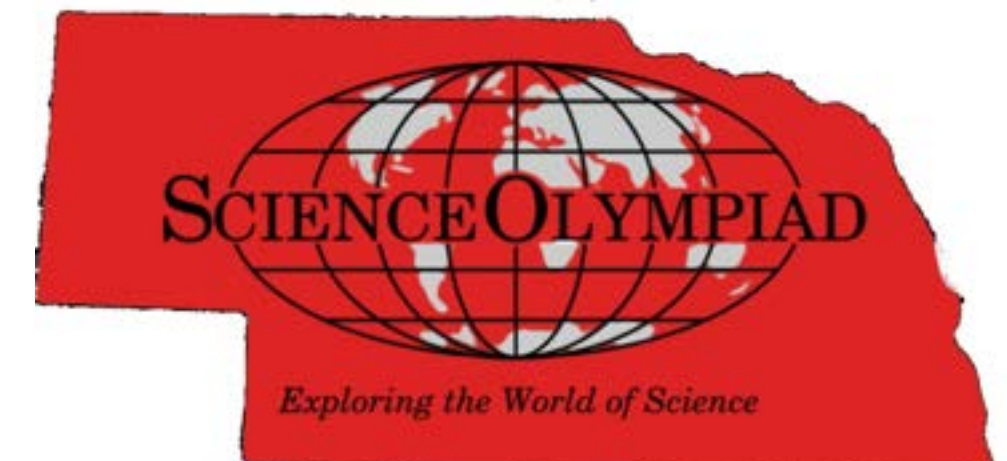
If you are new, Dee will create your account and send your password when registration become open. *There is a video online for help.*

- Registration for the State Tournament will open in **early March** if not sooner.
- There are **NO** additional fees for the State Tournament (other than State Membership.)
- You will register your team **NOW** (in March)
- you do **NOT** need to enter students into events yet
- Register even if you are not sure you can go - you can remove your team later if needed.

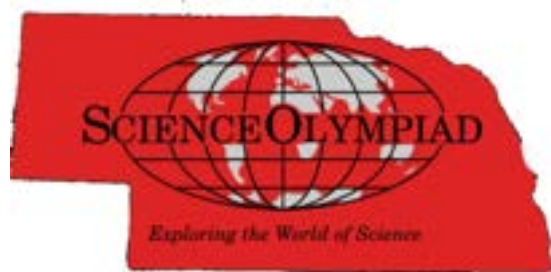


# **Enter Your Students for State Events on the Same Website: [nesoinc.org](https://nesoinc.org)**

- **Please enter these as soon as possible. You can change them as needed.**
- **You may only bring ONE Division B team and/or ONE Division C team to state.**
- **Each team has a max of 15 students and 5 alternates.**
- **Changes can be made up to two days before the State Tournament.**
- **The State Tournament is on Saturday April 18, so enter all students by Thursday April 16 so that rosters can be run on April 17th.**
- **Let Dee Johansen know about any last minute changes.**
- **Email or call Dee anytime for help!**







# GO TO STATE!

2026

- **It's not all about winning. Its about the experience. So even if you do not feel that your team is ready to compete - bring them anyway if you can!**
- **Coaches do not supervise or run events at state.**
- **If you bring both divisions, bring another coach or superviosr.**
- **Event Results will be shared on competition day and certified in the days that follow.**
- **The TOP Division B team and Division C team will be invited to the National Tournament which will be at USCin Los Angeles, California, on May 22-23.**

TIME TO  
Celebrate

