



Center for Faculty Excellence **Annual Report**

24
—
25



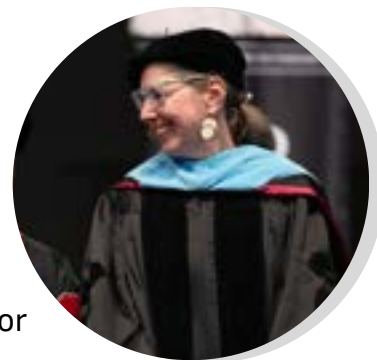
From the Director

Each day I witness the extraordinary talent and dedication of UNO's faculty. Their commitment to providing outstanding academic experiences to prepare students for fulfilling personal and professional lives, advancing their disciplines through research and creative activity, and engaging in our community is inspiring.

In 2024-25, the Center for Faculty Excellence (CFE) supported faculty by continuing its signature programs. Familiar CFE programs, such as new faculty onboarding, TABS, Communities of Practice, the TANDEM mentoring program, writing challenges, immersive writing experiences, and faculty search training, are woven into faculty life across campus and closely align with UNO's mission. In addition, partnerships with other campus units brought faculty together through reading groups, guest lectures, engaging workshops, and customized professional development. Newer initiatives such as coaching, teaching observations, and the Access to Excellence and Level Up faculty guides broadened CFE's impact on campus.

The expertise and efforts of faculty colleagues who served as CFE's consultants, coaches, facilitators, co-PIs, fellows, committee members, and content contributors made this possible. The support and guidance of campus leadership are also integral to CFE's successes. To each of you, **THANK YOU!**

We're already looking forward to enhanced and additional offerings for next year – including the Coaching Collaborative, a Weitz Innovation Initiative, that will offer varied types of coaching to faculty and staff.



2024-25 Highlights



Grew our academic community
57 new full-time faculty completed onboarding



Screened a film on neurodiversity
80 in the campus community watched the film



Helped to launch
3 Weitz Innovation projects



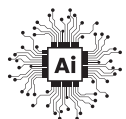
Facilitated 3 large-scale events
Over **180** faculty & staff attended



Encouraged academic writing
185 participated in writing groups, challenges, events & retreats



Updated search training
77 individuals completed new, easy-to-access, on-demand format



Consulted across campus
Served on CBE, AI, & Enrollment Days advisory groups; the Care Team & SAC



Supported part-time (PT) faculty
2 PT faculty resources created: Toolkit for C/Ds & the PT Value Book; hosted PT meet & greet



Crowd sourced content
2 new publications: Access to Excellence for early-career faculty & Level Up for mid-career faculty



Specialized communications
4 messages sent each month:
- Retention message to all faculty
- Newsletters for C/Ds, new faculty & PT faculty

Continued Signature Programs

TABS

Courses represented **22%**

Students in courses in which TABS was implemented **7%**

Faculty participation **8%**

UCAT

Faculty Teaching Observations

Participants: 64

"It was fun & beneficial to observe another faculty member teaching & it was insightful to hear his takeaways from observing my class as well."

CELEBRATE!

3 YEARS OF TANDEM

- 120 participants
- Interdisciplinary networking & connections
- Increased intent to stay & job satisfaction

FACULTY WELLNESS COACHING

"I wasn't able to see a clear path forward on this issue. Now just saying it out loud to someone else helps me identify a way to break the task into manageable increments."



WRITING CHALLENGES & DATA DIVES

Participation:

Fall - 53

Spring - 50

LEADERSHIP DEVELOPMENT

- 12 Academic Administrator Training Sessions at UNO
- 32 NU DEAL leaders supported across the NU system

SPRING WRITING SPRINT

"The space & community are everything!"

WRITING J(AM) & CAMP COMPLETION

"Thanks for this great opportunity! I got so much academic writing done that would not have been completed otherwise!"

COMMUNITIES OF PRACTICE

Participation by Focus Areas:

Student Engagement: 42

Writing/Research: 82

Gen Ed: 34

New partnerships led to new programs



General Education

- Creating Wicked Students lecture & workshop
- MavEd Course Redesign workshop

Care Team

- Teaching Tools for Difficult Classroom Situations event collaboration

First-Year Experience

- Customized professional development for instructors
- Student Success through Student Support event partnership

First-Year Writing

- Customized professional development for instructors
- Piloted the Teaching First-Year Writing Credential

Accessibility Services

- Normal Isn't Real screening & panel discussion

Faculty Senate

- Doggone Good Faculty
- Faculty GOATS

Learn More: Detailed Summaries

Review college-level participation data, outcome benchmarks, participant feedback, and facilitator information in detailed reports for the following programs.

COACHING

Faculty Wellness
Coaching



SCAN HERE

TABS

Teaching Analysis
by Students



SCAN HERE

TANDEM

Faculty
Mentoring



SCAN HERE

UCAT

University Committee for
the Advancement of
Teaching



SCAN HERE

Level Up

Listen to the AI-generated podcasts!



SCAN HERE

CENTER FOR FACULTY EXCELLENCE



Director, Connie Schaffer
Administrative Coordinator, EJay Johnson



uno.cfe@nebraska.edu



<https://bit.ly/CFEHomepage>



Criss Library 320