

# What Goes Into Biohazard Waste Containers?

## Yes!

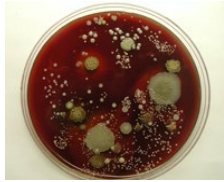
## No!



infectious materials and specimens



contaminated disposable PPE



contaminated solids



disposable, closed sharps containers



batteries



pharmaceutical waste



uncontaminated packaging and paper towels



loose sharps



radioactive materials



chemicals



BIOHAZARD



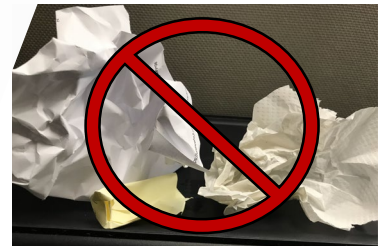
boxed pipettes and tips



loose sharps



loose pipettes and pipette tips



office paper and garbage

Questions?  
Contact EHS.  
(402) 554-3596  
[www.unomaha/ehs](http://www.unomaha/ehs)



ENVIRONMENTAL  
HEALTH & SAFETY

