



---

## IN THIS ISSUE

- 01 New Staff
  - 02 Dual Enrollment Registrations
  - 04 Dual Enrollment Instructor Awards
  - 06 Resources for Students
  - 07 Resources for Teachers
  - 07 APSI Institute
  - 08 General Education News
  - 09 Staff Directory
- 



## Welcome Aboard



*Susan Stiles, Curriculum and Transfer Specialist*

Many of you have previously worked with Colton Janes in his previous role as Curriculum and Transfer Specialist to create academic pathways to facilitate transfer of academic credit from community colleges to UNO programs. Colton recently accepted a new position at UNO in Online Program Development and we are pleased to announce that **Susan Stiles** has officially stepped into this role as of September 13<sup>th</sup>.

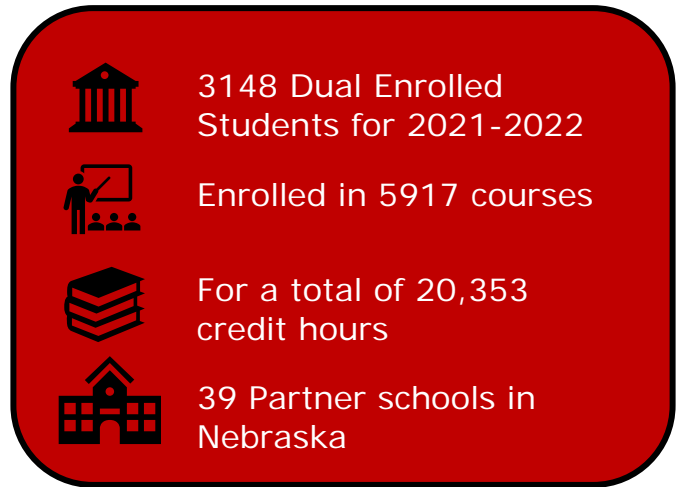
Susan is a proud alum of UNO and has professional experience working at Creighton and UNO. Prior to accepting this position, she most recently worked in UNO's College of Education, Health, and Human Sciences supporting advising and certification efforts. We are excited about the impact Susan will have in this position and are confident she will quickly earn your trust and admiration. Please feel free to reach out to Susan should you have any questions.

# Dual Enrollment

## Dual Enrollment Registrations 2021-2022

Kelly Malone and Andy Soper began visiting high schools in August for the Fall semester and again in January for the Spring semester, either in person or via Zoom, conducting over 300 presentations to inform students about how to earn UNO Dual Enrollment credit. We also offered 3 Family Information Sessions for parents and students to highlight the many opportunities available to students who participate in the dual enrollment program.

This is the second year that we have instituted a 6-week application window for the online dual enrollment application and it is working quite well based on feedback from students, parents, and high school staff.



3148 Dual Enrolled Students for 2021-2022

Enrolled in 5917 courses

For a total of 20,353 credit hours

39 Partner schools in Nebraska

\*numbers accurate at time of publication

Recently, UNO has added Elkhorn North and Gross Catholic High Schools, as well as the UNMC High School Alliance Program as dual enrollment partners. In addition, our office, working in conjunction with the School of Health & Kinesiology and the Department of Biomechanics, have added the following dual courses:

BMCH 2400	Human Physiology and Anatomy
HEKI 2000	Medical Terminology
KINS 1010	Intro to Sports Medicine
PHHB 1500	Intro to Public Health
ECON 1200	An Intro to the US Economy
PHHB 3030	First Aid

We wish to thank all of our high school faculty, administrators and dual enrollment coordinators who work so tirelessly with our office to make UNO's Dual Enrollment program a success for students!

---

## Maverick Moment with Dual Enrollment

In an effort to connect more directly with students to offer them support during their dual enrollment experience, our office implemented a pilot advising program at Westside and Omaha Burke High Schools. For Spring 2022, we have also incorporated Papillion-La Vista South, Creighton Prep and Millard West high schools into our advising pilot program. A dual enrollment counselor will be available to meet with students and answer any questions they may have about the dual enrollment program and the courses in which they are enrolled.

We hope that more focused guidance to our dual enrolled students will clarify program opportunities and requirements and help them make well-informed decisions. Many thanks to all of the high school counselors, dual enrollment teachers, and staff who have supported this initiative.

For more information about this program, please visit our [Dual Enrollment advising](#) webpage or contact [Mr. Andy Soper](#), Dual Enrollment counselor.



# Outstanding Dual Enrollment Instructor Awards



Kelly Malone, assistant director, UNO Dual Enrollment, Nick Reding and Jerry Kalina, principal, Papillion LaVista High School

We are pleased to announce that **Nick Reding** has received the **Outstanding Dual Enrollment Instructor Award for the 2020-21 academic year**. Nick is a dual enrollment instructor at Papillion La Vista High School and teaches PHYS 1110 & 1120 (General Physics I with Algebra and General Physics). Here are just a couple of examples of the many laudatory comments provided by Nick's colleagues:

*"Mr. Reding has done a phenomenal job at growing the AP Physics 1 & 2 courses here at PLHS! Not only have I been impressed with the number of students that Mr. Reding is able to get excited about Physics, but also the success that he is able to have with them! His ability to engage not only the students, but also the students' families is second to none!"*

*"Nick goes above and beyond for his AP Physics students. He has grown the program tremendously and is a great teacher and colleague."*

The purpose of the Outstanding Dual Enrollment Instructor Award (ODEIA) is to recognize an active UNO Dual Enrollment instructor's (educator) contribution to the Mission, Vision, and Values of the University of Nebraska at Omaha and the Office of General Education and Dual Enrollment. As a valued partner and educator, it is important to recognize the effort, impact, and direction that these instructors provide.

In addition to the Outstanding Dual Enrollment Instructor Award, we also want to recognize two other nominees with the Recognition of Excellence Award:

- **Lee Stover** of Burke High School, teaches GEOG 1050, Human-Environment
- **Tracy Rumbaugh** of Omaha Central, teaches BIOL 1450/1750 Biology I & II



Andy Soper, UNO Dual Enrollment Counselor, Lee Stover, Recognition of Excellence Award recipient, Kelly Malone, assistant director, UNO Dual Enrollment



Tracy Rumbaugh, Recognition of Excellence Award recipient, Kelly Malone, assistant director, UNO Dual Enrollment

---

Award recipients will also receive ticket vouchers to a UNO Athletic event for the following academic year.

***Congratulations to all of our Award recipients!***

Please visit our [Recognition and Events page](#) for more information about the award and how to nominate a teacher for the 2021-22 academic year.

We look forward to presenting the 2021-22 awards at our Year End Luncheon in June 2022!

---

## Dual Enrollment Faculty receive Awards

Our Dual Enrollment instructors are some of the best in Nebraska and we are proud to have them affiliated with our program and of their dedication to their students. During the 2020-2021 academic school year, several of our dual enrollment instructors were recipients of awards that recognized their achievements in education. These educators exemplify the best of the best and we congratulate all of these well deserving award recipients!

---

### The Alice Buffett Outstanding Teacher Award 2020-2021

**The Alice Buffett Outstanding Teacher Award** recognizes the achievements of skilled and dedicated educators in the Omaha Public Schools (OPS). Given to 15 teachers annually, the Award has recognized and rewarded nearly 300 teachers over the past two decades. Any Omaha Public Schools teacher or counselor (Pre-K through 12), with a minimum of two years experience, is eligible for nomination.

*The Buffett Foundation established the Alice Buffett Outstanding Teacher Awards to honor the vital role that teachers play in our society. The foundation believes that the position of the great teacher in molding children and young adults is too often diminished. We sometimes forget the teacher's enormous influence in building esteem and motivating young minds, as well as creating an educational atmosphere where learning leads to satisfying lives and careers.*

Please [\*\*click here\*\*](#) to learn more about the Alice Buffett Outstanding Teachers for 2020-2021.



**Brian Anderson**

Art teacher at Burke High School

Teaches ART 1110 for Dual Enrollment



**Royanna Bristol**

Science teacher at Bryan High School

Teaches BIOL 1450/1750 for Dual Enrollment



**Andrea Burton**

Family consumer science teacher at Burke High School

Teaches TED 1010 for Dual Enrollment



**Paula Vazzano**

English teacher at Benson High School

Teaches ENGL 1010/1020 for Dual Enrollment

## Dual Enrollment Faculty receive Awards



### Archdiocese of Omaha, 2021 Educator of the Year

John Roshone received the award for Educator of the Year at the secondary level from the Archdiocese of Omaha. The award was given at the 44th annual Archbishop's Dinner for Education on September 23, 2021 at the CHI Health Convention Center. John is part of a larger group of eight educators the Archdiocese of Omaha honors each year. Please [click here](#) to learn more about John and the award.

John teaches History at Mount Michael Benedictine School and is a dual enrollment instructor for HIST 1110 and HIST 1120.



*“Better than a thousand days of diligent study is one day with a great teacher”*

*-Japanese Proverb*



### 2021-2022 Nebraska English Teacher of the Year

The Nebraska English Language Arts Council and Nebraska Council on Teacher Education have named Carrie Palmesano as Nebraska's English Teacher of the Year for 2021-2022. An Omaha native who attended Duchesne Academy, Creighton, and then UNO (for a Master's degree in English), "Palmesano is one of the most innovative, caring, and dedicated teachers one is ever likely to meet," says Chuck Johanningsmeier, Dual Enrollment Coordinator and UNO's Professor of English.

Please [click here](#) to read more about Carrie, her accomplishments and this prestigious award. Carrie is a Dual Enrollment instructor at Omaha South and teaches ENGL 1010 and ENGL 1020.



# Resources for Students

When your students enroll in UNO's Dual Enrollment program, they will have access to some of the same services that our undergraduate students enjoy:

## Library Services

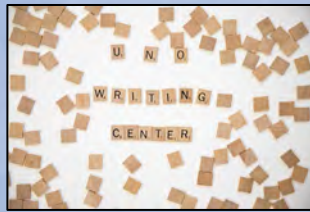


Available Services:

- Borrowing privileges
- Access to the online databases
- Archives
- Creative Production Lab

Please direct your students [here](#) to learn more.

## Writing Center



Dual Enrollment students enrolled in ENGL 1010 or 1020 have free access to [UNO Writing Services](#) and will need to make an [online appointment](#) using their UNO email. Please have students contact [Kelly Malone](#) for help with obtaining their UNO email address.

## Math-Science Learning Center (MSLC)



The MSLC is accepting appointments both in person and on-line.

Please direct your students to the [MSLC](#) to learn more about this free service.

## Computer Science Learning Center (CSLC)



Students Dual enrolled in Computer Science courses have access to the CSLC, free of charge.

Please direct students to the [CSLC](#) for more information and to make an online appointment.

## UNO Transcripts

Ordering transcripts online is the fastest way for students to have their transcripts sent from our UNO Registrar's Office to their intended university, college or employer. Students must have them sent directly from UNO in order for their transcript to be official. Receiving institutions will not accept a hand delivered transcript or a transcript that is mailed from the student.

Students can go to the [Registrar's Online Transcript service](#) on the UNO website **OR**

they can print off the [Dual Enrollment Transcript Request form](#) and follow the instructions to send transcripts

## Dual Enrollment Website

Our [Dual Enrollment website](#) has a wealth of information dedicated to helping you and your students navigate the world of dual enrollment at UNO:

- [Instructional Videos](#) for students/parents on the enrollment process
- A [High School Representatives](#) site for instructors and DE Coordinators
- The [High School Directory](#) lists each school's courses, instructors, important dates and information pertaining to General Education Curriculum requirements
- The [Faculty Handbook](#) is another great resource for high school



# Resources for Teachers

## Check Course Rosters

Before the end of the Spring term, please make sure that the correct students are enrolled in your course(s), check that student names are spelled correctly and notify our office if there are items that need to be addressed.

## Submit Grades

On Friday, May 6, 2022, high school faculty may begin to submit grades for the courses that are completed for Spring 2022. **The deadline to enter grades into [MavLINK](#) is **Friday, June 3, 2022**.** Please be sure to plan accordingly to avoid any delay in reporting your student's grades via MavLINK.

For assistance with entering grades, please use the [Grade Posting guide](#) available in the [Grading Policies/Procedures](#) section of our website.

## Syllabi Review

Please continue to review and update your course syllabus to reflect what is being taught in your course as it aligns with the respective UNO Academic Department. If you need assistance with the template, organizing content, or have any questions about your course syllabus, please reach out to our office as soon as possible.

## Library Access

High school faculty and their students who are enrolled in a UNO course have the same access to resources that an undergraduate student does! Please check the [Library Hours Schedule](#) for accessibility and to make an appointment online, if required:

- [Reserve a room](#)
- [Access to specific computer and/or software](#)
- [Loan Privileges](#) (books, media, computer accessories)
- [Creative Production Lab](#)

## Canvas

High school faculty: Did you know there is a Learning Management System (LMS) set up for you and your colleagues? When you log into [Canvas](#), you are a part of a "class" of your peer educators to distribute course materials, collaborate on topics, seek input and share experiences. Here's another helpful [Canvas link](#) with information about Canvas Basics, helpful videos and more.

# Advanced Placement Summer Institute

[The UNO Advanced Placement® Summer Institute \(APSI\)](#) is designed not only for those currently teaching Advanced Placement® courses, but also for those who will be teaching AP® courses, honors and/or accelerated classes, and special courses that feed into an AP® program.

Courses are designed for both new and experienced AP® teachers and focus on what is new in the AP® curriculum, as well as offering an overview of the AP® semester/year long course, its objectives, and exam content. The interaction and sharing of pedagogy and content between the faculty and the AP® teachers provide for an exciting and challenging week that results in improved teaching and learning in the Advanced Placement® classroom.

The APSI will be held completely online. Here are some things to remember:

- ❖ Dates: June 20 – 24, 2022
- ❖ Registration Deadline: May 20, 2022
- ❖ Registration Fee: \$650
- ❖ No registrations will be accepted after May 20<sup>th</sup>



Course Offerings	Consultant
Calculus – AB and BC combined	Janice Rech - UNO
English Literature & Composition	James Garner – Decatur High School
AP Computer Science Principles Online	Perla Weaver – Johnson County Comm College
AP Spanish Language Online	Gabriela Martin – Lake Zurich High School

**[Click here to Register for APSI 2022](#)**

Please contact Andy Soper, APSI coordinator if you have any questions: [unoapsi@unomaha.edu](mailto:unoapsi@unomaha.edu)

# General Education

## 2020-21 Annual Report

[Here is a link to the 2020-2021 General Education annual report](#) based on last year's assessment cycle. In this document you will find information about overall headcount and credit hour production, as well as a summary of student performance in meeting UNO's General Education learning outcomes. The General Education committee will be discussing this data throughout the fall semester.

---

## 2021-22 General Education Assessment Cycle Requirements

Assessment is an important, and required, mechanism for maintaining academic quality of Gen Ed courses. **During the 2021-2022 academic year, units offering courses that fulfill Humanities/Fine Arts requirements, and/or those General Education courses on probation for not completing assessment during 2020-2021, should submit an assessment report to the General Education Committee for review by June 1<sup>st</sup>, 2022.**



---

## Assessment and Common Rubrics

As a reminder, the General Education committee has developed [common rubrics](#) for each of the General Education distribution requirements. I want to strongly encourage as many faculty as possible who are teaching General Education courses to assess the outcomes using the common rubrics embedded in Canvas. Instructions and directions are located [at this link](#). Units/courses that assess General Education outcomes using the embedded common rubrics in Canvas will be able to submit a [more limited assessment report](#), while units using their own Gen Ed proficiency definitions and targets still need to use the [legacy template](#).





## General Education and Dual Enrollment Staff



Matt Tracy  
Director

[mtracy@unomaha.edu](mailto:mtracy@unomaha.edu)



Susan Stiles  
Curriculum and Transfer Specialist

[sstiles@unomaha.edu](mailto:sstiles@unomaha.edu)



Kelly Malone  
Assistant Director – Dual Enrollment

[malonek@unomaha.edu](mailto:malonek@unomaha.edu)



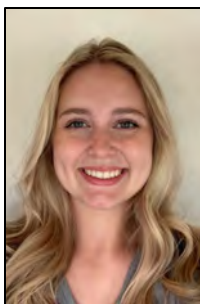
Andrew Soper  
Counselor – Dual Enrollment

[asoper@unomaha.edu](mailto:asoper@unomaha.edu)



Maureen Rosenkaimer  
Office Assistant

[mrosenkaimer@unomaha.edu](mailto:mrosenkaimer@unomaha.edu)



Mikayla Niemoth  
Graduate Assistant

[unodualenroll@unomaha.edu](mailto:unodualenroll@unomaha.edu)

## Office of General Education and Dual Enrollment

108 Eppley Administration Building | 6001 Dodge Street Omaha, NE 68182 | 402.554.3810

[dualenroll.unomaha.edu](http://dualenroll.unomaha.edu) | [unodualenroll@unomaha.edu](mailto:unodualenroll@unomaha.edu)