

MEMORY SERVES

Drawing Others Close

AUG 25-SEPT 29, 2022

TOURS TAKE ABOUT 1 HOUR
•
ALIGNS WITH CURRICULUM STANDARDS
•
STUDENTS GET A FREE SKETCHBOOK
•
EMAIL ABOUT TRANSPORTATION FUNDING
unoartgallery@unomaha.edu

TEACHING ACTIVITY IDEAS 1

STUDENTS 7-12

The Intersection of Care, Relationships, and Art

PRIOR TO THE VISITING THE EXHIBITION IN THE WEBER ART GALLERY

Consider the question -

1. When you look at a portrait, whose 'voice' is most prominent, the artist's or the subject's?

Review the following quotes from Mark Gilbert then visit cfam.unomaha.edu and watch, Scottish Artist, Norman Gilbert - Drawings of his late wife, Pat. After watching the video read, How art is helping doctors and caregivers better understand dementia patients.

RELATIONSHIPS

"When we look at a portrait, we are not just looking at a picture of an individual; we are looking at a picture of someone being looked at. Portraits are a testament to a relationship." - Mark Gilbert

REASONS FOR MAKING THE WORK/MOTIVATIONS

According to Mark Gilbert, his "portraits were created as part of a research study; Norman Gilbert's were created out of necessity."

Based on what you understand of the art and artists, answer the following questions:

2. How might the artist/sitter relationship parallel aspects of patient/caregiver interactions?
3. What do you think motivated Norman Gilbert to make his drawings?
4. Do you think it was appropriate for Norman Gilbert to make these drawings? Explain why you think it is or is not appropriate?
5. What reasons do you think Mark Gilbert had to create his portraits?

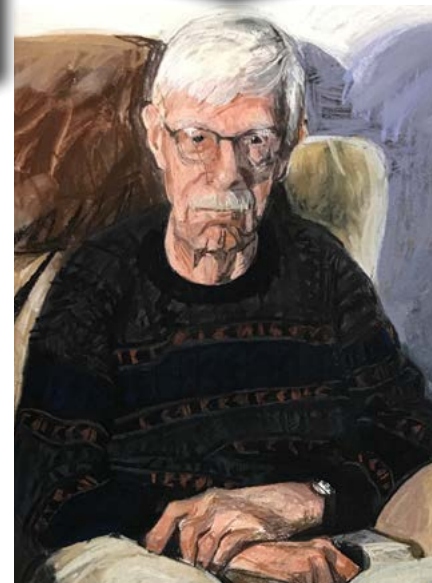
WHILE AT THE EXHIBIT

Compare and contrast the nature of relationships pictured in Mark and Norman Gilbert's artwork. Consider the following questions as you view the artwork.

6. Norman Gilbert's pictures are a testament to a husband and a wife, an artist and a sitter, and a patient and a caregiver. As a viewer, how do you relate to these drawings?
7. Mark Gilbert's works reflect that of an artist and a sitter and a researcher and a subject. As a viewer how do you relate to these drawings?

AFTER THE VISIT

Revisit your answers to questions 1 - 5 and consider how viewing the artworks influenced any changes in your answers.



"LAWRENCE" Pastel on Paper, Mark Gilbert



"PAT" Pencil, Norman Gilbert

Teaching Activity Ideas were created in consultation with the Teacher Education Department in the UNO College of Education, Health, and Human Sciences.

7.8.2022



COLLEGE OF COMMUNICATION, FINE ARTS AND MEDIA
**SCHOOL OF THE ARTS
ART GALLERY**

Weber Fine Arts Building
6505 University Dr S
Omaha, NE 68182

artgallery.unomaha.edu
unoartgallery@unomaha.edu
402.554.2796



UNMC Geriatric & Palliative Medicine



HUMANITIES NEBRASKA



NEBRASKA ARTS COUNCIL

**GERIATRIC MEDICINE
RESEARCH**

Dementia Services Development Trust



UNO Gerontology, UNO College of Arts and Sciences, UNO Medical Humanities
Lori and Paul Hogan