

UNO Ensemble auditions Fall 2025

Play ALL of the following excerpts if you are auditioning on OBOE

The image displays a musical score for Oboe, featuring excerpts from the *Turandot Scherzo*. The score is written on ten staves, with a large red 'X' drawn across the middle six staves (staves 3 through 8), indicating that these sections are not to be played. The first staff (measure 70) is marked *Solo* and *mf*. The second staff (measure 75) is marked *mp* and *mf*. The third staff (measure 90) is marked *p* and *mf*. The fourth staff (measure 105) is marked *mf* and *mf*. The fifth staff (measure 120) is marked *f* and *mf*. The sixth staff (measure 135) is marked *mf cresc.* and *ff*. The seventh staff (measure 150) is marked *1* and *1*. The eighth staff (measure 159) is marked *1* and *1*. The ninth staff (measure 168) is marked *Moderato* (♩ = 132), *1*, *2 rit.*, *1*, *atempo rit.*, and *2*. The tenth staff (measure 177) is marked *2*. The title *Turandot Scherzo* is written at the bottom left of the page.

Solo
mf
E
mp
mf
F
p
mf
G
f
H
mf cresc.
ff
I
1
1
1
1
Moderato (♩ = 132)
1 *2 rit.* *1* *atempo rit.* *2*
2
Turandot Scherzo

UNO Ensemble auditions Fall 2025
OBOE (continued)

Handwritten musical score for Oboe, measures 100-151. The score includes various musical notations such as notes, rests, and dynamic markings. Handwritten annotations include a red line through measure 100, a red bracket under measure 104, and a red circle around measure 130. Section markers K, L, M, N, O, P, Q, R are placed above the staves. The piece concludes with a 'tenuto' marking and a '9' below the staff.

Measures 100-104: *mf* (marked with a red line through the staff)

Measure 104: *mf* (marked with a red bracket)

Measures 105-113: *f* (Section marker **L** at measure 113)

Measures 114-121: *mf* (Section marker **M** at measure 121)

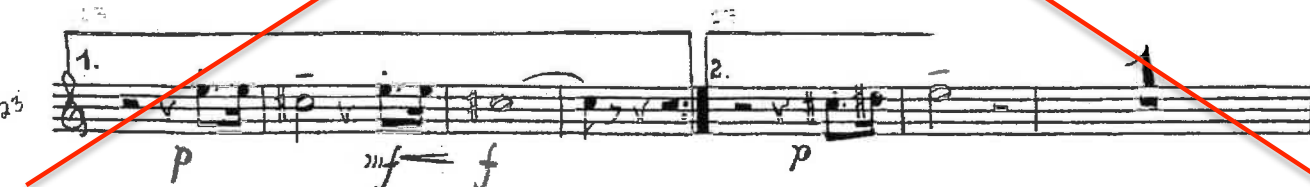
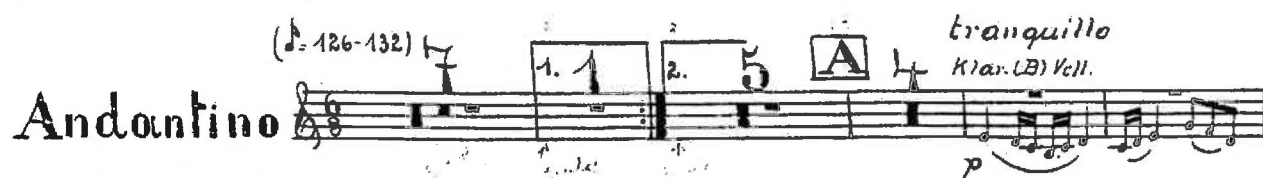
Measures 122-130: *f* (Section marker **N** at measure 130, marked with a red circle)

Measures 131-138: *f* (Section marker **O** at measure 131)

Measures 139-151: *tenuto* (Section marker **P** at measure 139, *atempo* at measure 151, Section marker **Q** at measure 151, Section marker **R** at measure 151, measures 13, 15, and 15 marked with a red line through the staff)

UNO Ensemble auditions Fall 2025
OBOE (continued)

0



Marsch

