

## Hindemith: Symphonic Metamorphosis

The flute solo in the third movement is undoubtedly one of the most technically demanding passages in the entire orchestral literature. It gives us a chance to display our skills in finger dexterity, clarity of articulation, tuning, breathing discipline, dynamic balances (especially between the highest and lowest notes), and our sense of *bravura* style.

We must note immediately that the tempo for this solo is not what Hindemith has marked in the score ( $\text{♩} = 126-132$ ). Most conductors will do this around  $\text{♩} = 100$ ; in

fact, Hindemith himself, conducting the Berlin Philharmonic in a recently reissued CD, just barely makes it to 100. Oddly, he follows the metronome markings of the other three movements quite accurately, but definitely not for the third movement. This poses a dilemma, because when you play this in the orchestra, you can pretty much count on an average tempo of 100. But when you play it this way in an audition it tends to sound too slow, because it lacks the underpinning of all the thematic material that supports this obligato solo.

Andantino  $\text{♩} = 104 - 108$

31 Solo *mf*

33

35 **C**

37

39 *f* *mf*

41

43 *f* *mf cresc.*

45 *f*

47 *dim.* *allarg.* *p*

UNO Ensemble Auditions Fall 2025 : PICCOLO excerpts (Hindemith: Mvt 1)

85 *mf* **E** 3 *mf* 1

91 *p* *mf*

103 **F** 3 *mf* 9 1

121 **G** *pp* *f*

137 **H** *f* *mf* 2 *f*

150 **I**

158

UNO Ensemble Auditions Fall 2025 : PICCOLO excerpts (Hindemith: Mvt 2)

Turandot, Scherzo

*Moderato* (♩ = 132) **A** 2 *rit.* 1 *a tempo* *rit.* *p*

1 2 6



Handwritten musical score for 'The Rose Tree'. The score is written on six staves, with the last three staves (44-104) crossed out with a large red X. The notation includes treble clefs, key signatures of one flat (B-flat), and various musical notations such as notes, rests, and dynamic markings. The tempo markings are 'atempo rit.' and 'atempo'. The score includes section markers B, C, D, E, F, G, H, I, J, K, and L. The tempo markings are 'atempo rit.' and 'atempo'. The score includes section markers B, C, D, E, F, G, H, I, J, K, and L. The tempo markings are 'atempo rit.' and 'atempo'. The score includes section markers B, C, D, E, F, G, H, I, J, K, and L.



Kleine Flöte

7/9  
**L**



**M**



**N**

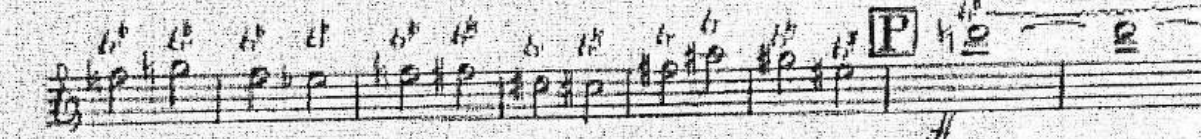


**O**



*tenuto*

**P**



*al tempo*

**Q**

13

**R**

15

**S**

16

**T**

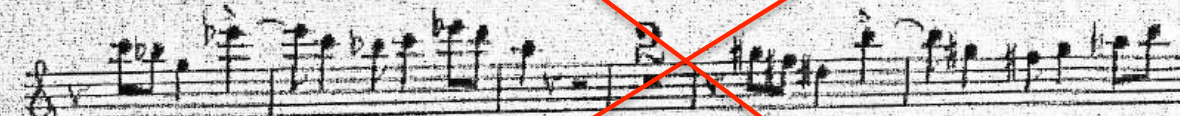
*1. Fl.*

11

**U**

2

*1. Fl.*



**V**

11



**W**

*1. 2. Klar. (B)*

1

1

3

1

1

1

