

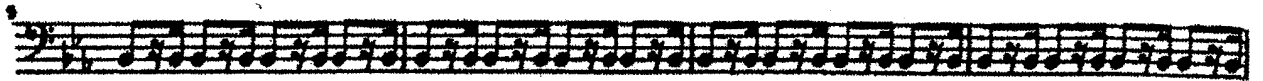
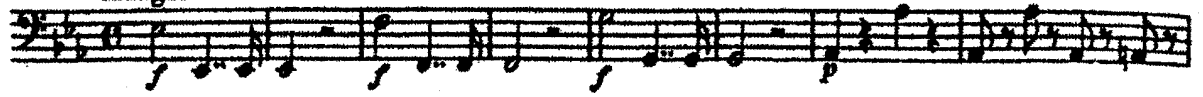
Bass

Wolfgang Amadeus Mozart Symphony No. 39, K. 543, Mvt. I

Violoncello und Kontrabaß

$\text{♩} = 75$

Adagio



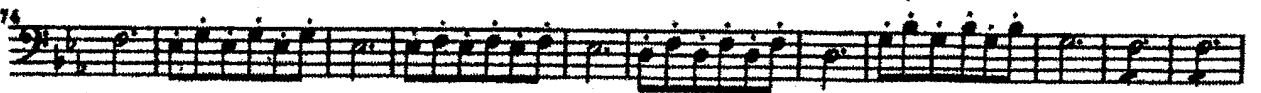
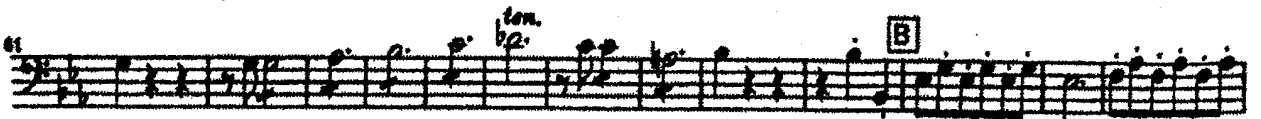
Handwritten annotations and fingering for measures 12-21:

- Measure 12: $\pi \pi V V$
- Measure 13: $h.p. \pi$
- Measure 14: $\pi V \pi V$
- Measure 15: $Dstr$
- Measure 16: $h.p. V$
- Measure 17: $\pi \pi V$
- Measure 18: V
- Measure 19: $\pi V \pi V$
- Measure 20: V
- Measure 21: $Dstr$

Fingering numbers: 1414, 42, 41, 42, 4; 1424, 42, 21, 41, 41; 1412, 14, 12; 4, 42, 41, 42, 14.

Other markings: (p) , $h.p.$, $Dstr$, $ASTR$, $Dstr$.

Allegro



* if no extension, 8va low D \flat + E \flat

BASS

Symphony No. 2 in D Major, Op. 73, Mvt. I

Kontrabaß

Allegro non troppo

9

13

36

52

80

78

89

98

108

118

124

132

142

152

p

dim.

Pk. Vcl. u. Pos. Klar. pizz. 3 **A** 3 arco *p*

cresc.

sf **B** 14 Viol. I

sf **C** pizz. *p*

arco *p*

D pizz.

arco *pp.* *cresc.*

E (*quasi ritenuto*) *f* 4/4 pos *sf* *ben marc.* 3rd V pos 4 *sf marc.* 3rd V pos 4 *Estr.* *G Str.*

h.p. *VI 4 4 4* *poco espr.* *Astr.* *Estr.*

ff *4 4* *1 2 4 4* *V* *II* *cresc.* *Dstr.*

ff *2 4* *III* **F** pizz.

♩ = 104-108