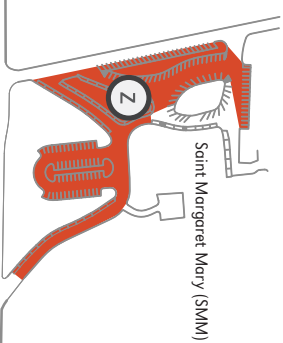




UNIVERSITY OF NEBRASKA AT OMAHA DODGE CAMPUS PARKING MAP

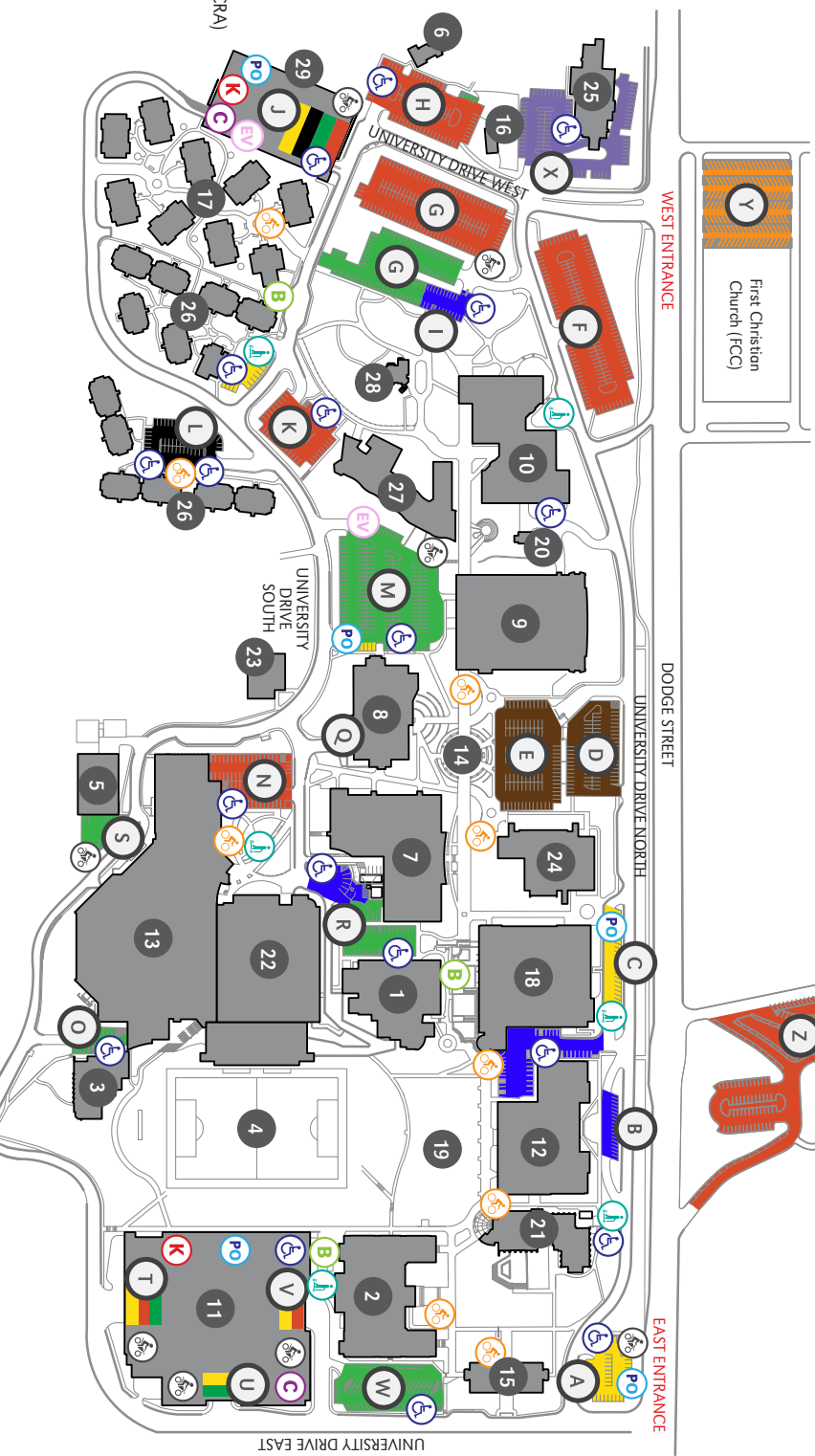
402.554.2800 | unomdha.edu

UPDATED 04-18-19



Saint Margaret Mary (SMM)

- ### BUILDING KEY
- 1 Allwine Hall (AH)
 - 2 Arts & Sciences Hall (ASH)
 - 3 Biomechanics Research Building (BRB)
 - 4 Caniglia Field (CF)
 - 5 Central Utilities Plant (CUP)
 - 6 Child Care Center (CCC)
 - 7 College of Public Affairs & Community Service (CPACS)
 - 8 Barbara Weitz Community Engagement Center (Weitz CEC)
 - 9 Criss Library (CL)
 - 10 Durham Science Center (DSC)
 - 11 East Parking Garage (EPG)
 - Lot T - Lower Level
 - Lot U - Middle Level
 - Lot V - Upper Level
 - 12 Epley Administration Building (EAB)
 - 13 Health & Kinesiology Building (H&K)
 - 14 Henningson Memorial Campanile (HMC) (clock tower)
 - 15 Koyser Hall (KH)
 - 16 Landscape Services (LS)
 - 17 Maverick Village (MV)
 - 18 Milo Bail Student Center (MBCS)
 - 19 Pep Bowl (open space)
 - 20 Resource Conservation & Recovery Area (RCRA)
 - 21 Roskens Hall (RH)
 - 22 Sopp Fieldhouse (SFH)
 - 23 Sculpture & Ceramics Studio (SCS)
 - 24 Strauss Performing Arts Center (SPAC)
 - 25 Thompson Alumni Center (TAC)
 - 26 University Village (UV)
 - 27 Weber Fine Arts Building (W/FAB)
 - 28 6533 University Drive South (WC)
 - 29 West Parking Garage (WPG)



PARKING KEY	
STUDENT	FACULTY
F/S/S SURFACE PERMITS	VISITOR (NO UNO)
RESERVED	CEC VISITOR
EVENT PARKING	MV/UV RESIDENT

PERMITS REQUIRED
Faculty/Staff/Stud.
Surface Lots:
7 A.M. to 7 P.M. (M-TH)
7 A.M. to 5 P.M. (F)
Garages:
7 A.M. to 7 P.M. (M-TH)

* Parking permit types are assigned to specific surface lots, garages, and/or garage levels. It is the responsibility of the permit holder to know which designated areas their permit is valid in.

MAP KEY	
Handicap Parking	Motorcycle Parking
Park Omaha	Bicycle Racks
Kiosks	Scooter Drop-off
Carpool	B-Cycle Station
EV Charging Station	

TO SCOTT CAMPUS (0.75 MILES)
18 MIN WALK | 5 MIN BIKE

UNIVERSITY OF
Nebraska
Omaha

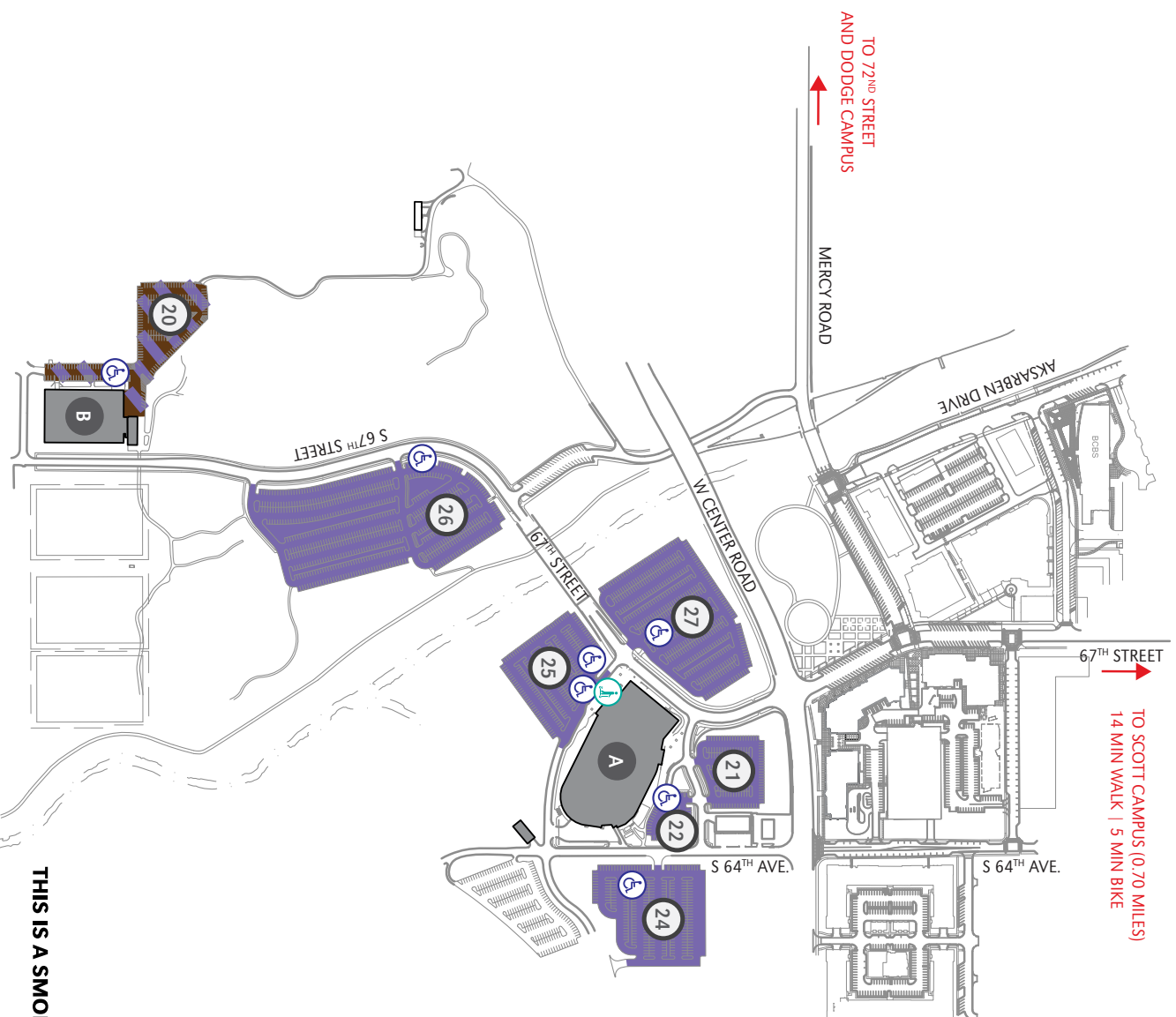
THIS IS A SMOKE- AND TOBACCO-FREE
CAMPUS AS OF 8/22/16



UNIVERSITY OF NEBRASKA AT OMAHA CENTER CAMPUS PARKING MAP

402.554.2800 | unomdha.edu

UPDATED 04-18-19



PARKING KEY

EVENT PARKING

NO PERMITS REQUIRED

* Parking permit types are assigned to specific surface lots, garages, and/or garage levels. It is the responsibility of the permit holder to know which designated areas their permit is valid in.

MAP KEY

Handicap Parking

Scooter Drop-off

BUILDING KEY

A Baxter Arena

B Center Dome

THIS IS A SMOKE- AND TOBACCO-FREE CAMPUS AS OF 8/22/16

UNIVERSITY OF
Nebraska
Omaha

UNO Dome Map
6808 Spring St, Omaha, NE 68106

