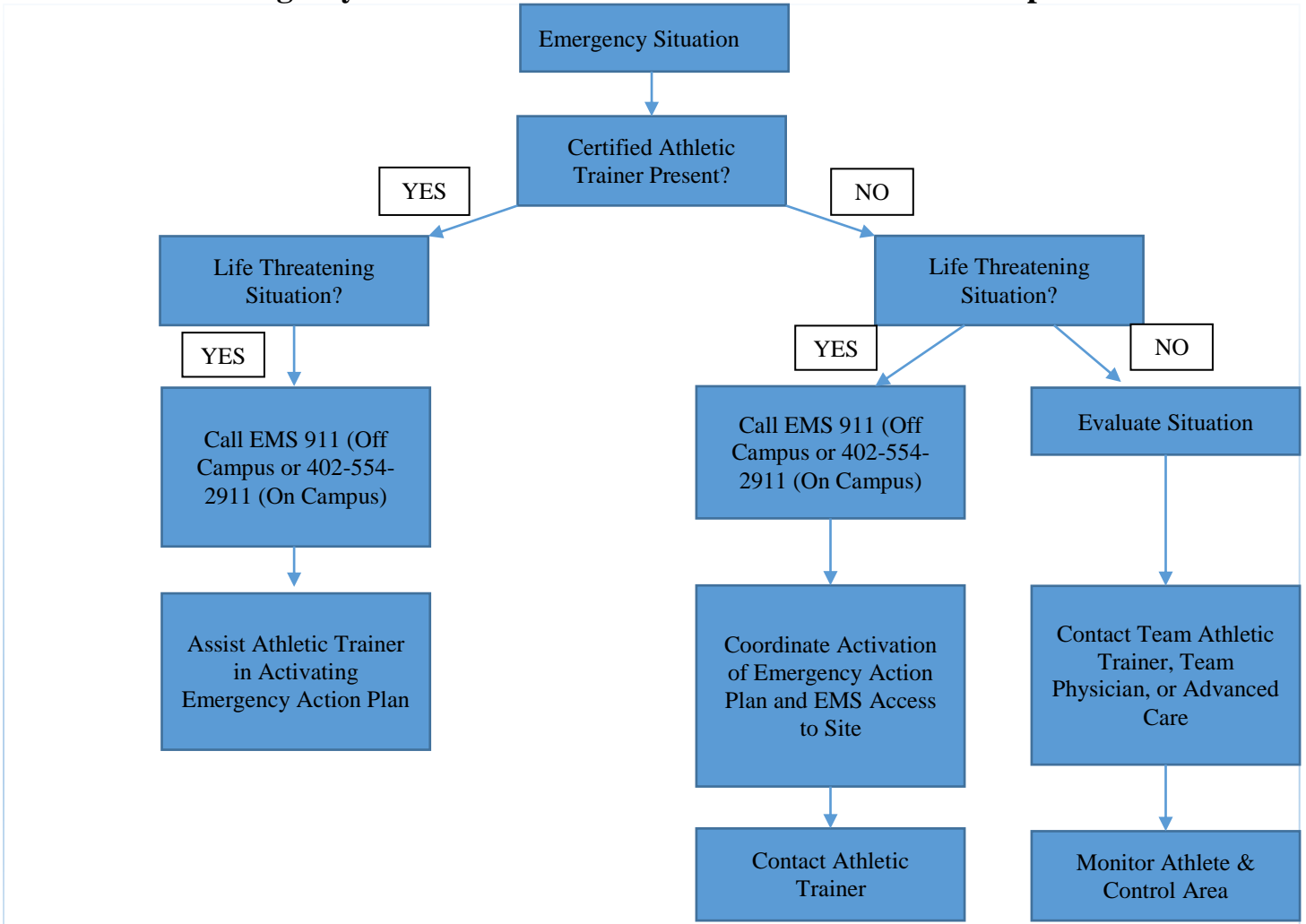


# University of Nebraska Omaha Athletics

## Emergency Medical Plan for In-Season & Out of Season Sports



Team Physician

**Matt Beacom, M.D.**

O: 402-554-2774

C: 402-957-0965

Sports Medicine Staff

**Masayasu "Masa" Takaiwa – Hockey/Golf Soccer/Women's Softball**

O: 402-554-3783

C: 402-290-3651

**Mike Nicola – Men's Basketball/Tennis**

O: 402-554-3184

C: 402-598-3474

**Tony Taylor – Volleyball/Swimming&Diving/Baseball**

O: 402-554-3278

C: 402-594-4953

**Jo Gundrum – Women's Basketball/Tennis**

O: 402-554-3174

C: 402-216-9740

**Phil Dennie – Men's**

O: 402-554-4997

C: 218-310-4281

**Lauren Rawson – Women's Soccer/Cross Country/Track&Field**

O: 402-554-4997

C: 402-595-6527

EMS/Hospitals/Urgent Care Information

Emergency Medical Services

**From Cell : 911**

**From Campus Land line: 4-2911**

Campus Security From Cell: 402-554-2911

Hospitals

**Methodist Hospital**

8303 Dodge St., 68114

ER: 402-354-4424

**UNMC**

981150 Nebraska Medical

Ctr., 68198

ER: 402-559-5413

Urgent Care

**Rockbrook Urgent Care**

2821 S. 108<sup>th</sup> Street, #3

Omaha, NE 68144

O: 402-933-8201

Hours: 8am – 8pm Monday –

Saturday 10am – 6pm

Sunday

**Midwest Minor Medical**

8610 West Dodge Road

Omaha, NE 68114

O: 402-827-6511

Hours: 8am – 9PM

Sunday - Saturday

**University of Nebraska Omaha**  
**Emergency Action Plan (EAP) – Athletic Training Room**

**Emergency Medical Services:**

**Call From Your Cell Phone** **911**

**Campus Security**

**From a Cell Phone** **402-554-2911**

**From a University Phone** **4-2911**

**Emergency Situation Protocol:**

- Highest ranking medical personnel takes charge
- Initial assessment is completed and duties are delegated
- Athletic training student or manager calls for assistance
- Athletic training student, manager, or event management staff meets the ambulance
- Coach and Event management staff works crowd control
- Emergency equipment (AED, splints, crutches, spineboard, oxygen) located in taping room

1. First Call 911 to activate Emergency Medical Services  
Call Campus Security (if called 2<sup>nd</sup>, tell them EMS has been alerted)
  - A. Identify yourself ***“My name is \_\_\_\_\_ and I am a(n) \_\_\_\_\_ at the University of Nebraska Omaha.”***
  - B. Number of individuals injured
  - C. Condition of the injured ***“We have an emergency, please send paramedics immediately for (nature of injury).”***
  - D. Care being given to the injured
  - E. Specific directions ***“We are at the athletic training room located in the Sapp Field House on UNO’s campus at 6001 Dodge St. Please meet (person meeting EMS) at the front entrance on the northwest corner.”***
  - F. Other information as requested
  - G. Make sure you hang up after the dispatcher
2. Send someone to meet EMS at the designated spot
3. Provide appropriate medical care until the arrival of EMS personnel and upon arrival provide pertinent information (method of injury, vital signs, treatment rendered, medical history) and assist with emergency care as needed.
4. Staff member should accompany individual to the hospital
5. Bring athlete’s medical information to the hospital
6. Contact the Staff Athletic Trainer/Team physician if not on site already
  - a. Contact information on page 2
7. Staff athletic trainer will contact athlete’s parents

**University of Nebraska Omaha**  
**Emergency Action Plan (EAP) – Baseball**

**Emergency Medical Services:**

**Call From Your Cell Phone** **911**

**Campus Security**

**From a Cell Phone** **402-554-2911**

**From a University Phone** **4-2911**

**Emergency Situation Protocol:**

- Highest ranking medical personnel takes charge
- Initial assessment is completed and duties are delegated
- Athletic training student or manager calls for assistance
- Athletic training student, manager, or event management staff meets the ambulance
- Coach and Event management staff works crowd control
- Emergency equipment (AED, splints, crutches) located on home team bench
- Spine board located in shed behind home plate

1. First Call 911 to activate Emergency Medical Services  
Call Campus Security (if called 2<sup>nd</sup>, tell them EMS has been alerted)
  - A. Identify yourself “*My name is \_\_\_\_\_ and I am a(n) \_\_\_\_\_ at the University of Nebraska Omaha.*”
  - B. Number of individuals injured
  - C. Condition of the injured “*We have an emergency, please send paramedics immediately for (nature of injury).*”
  - D. Care being given to the injured
  - E. Specific directions “*We are at the Boys Town Baseball Field located at Boys Town, 14080 Boys Town Hospital Rd. Please meet (person meeting EMS) at either the left field gate or the 3<sup>rd</sup> base gate.*”
  - F. Other information as requested
  - G. Make sure you hang up after the dispatcher
2. Send someone to meet EMS at the designated spot
3. Provide appropriate medical care until the arrival of EMS personnel and upon arrival provide pertinent information (method of injury, vital signs, treatment rendered, medical history) and assist with emergency care as needed.
4. Staff member should accompany individual to the hospital
5. Bring athlete’s medical information to the hospital
6. Contact the Staff Athletic Trainer/Team physician if not on site already
  - a. Contact information on page 2
7. Staff athletic trainer will contact athlete’s parents

**University of Nebraska Omaha**  
**Emergency Action Plan (EAP) – Century Link Hockey**

**Emergency Medical Services:**

**Call From Your Cell Phone** **911**

**Campus Security**

**From a Cell Phone** **402-554-2911**

**From a University Phone** **4-2911**

**Emergency Situation Protocol:**

- Highest ranking medical personnel takes charge
- Initial assessment is completed and duties are delegated
- Athletic training student or manager calls for assistance
- Athletic training student, manager, or event management staff meets the ambulance
- Coach and Event management staff works crowd control
- Emergency equipment (AED, splints, spineboard, oxygen, crutches) located on home team bench

1. First Call 911 to activate Emergency Medical Services  
Call Campus Security (if called 2<sup>nd</sup>, tell them EMS has been alerted)
  - A. Identify yourself ***“My name is \_\_\_\_\_ and I am a(n) \_\_\_\_\_ at the University of Nebraska Omaha.”***
  - B. Number of individuals injured
  - C. Condition of the injured ***“We have an emergency, please send paramedics immediately for (nature of injury).”***
  - D. Care being given to the injured
  - E. Specific directions ***“We are at the hockey rink at Centurylink on 455 North 10th ST. Please meet - (person meeting EMS) at the loading dock entrance #4 or #5.”***
  - F. Other information as requested
  - G. Make sure you hang up after the dispatcher
2. Send someone to meet EMS at the designated spot
3. Provide appropriate medical care until the arrival of EMS personnel and upon arrival provide pertinent information (method of injury, vital signs, treatment rendered, medical history) and assist with emergency care as needed.
4. Staff member should accompany individual to the hospital
5. Bring athlete’s medical information to the hospital
6. Contact the Staff Athletic Trainer/Team physician if not on site already
  - a. Contact information on page 2
7. Staff athletic trainer will contact athlete’s parents

**University of Nebraska Omaha**  
**Emergency Action Plan (EAP) – Civic Center Hockey**

**Emergency Medical Services:**

**Call From Your Cell Phone** **911**

**Campus Security**

**From a Cell Phone** **402-554-2911**

**From a University Phone** **4-2911**

**Emergency Situation Protocol:**

- Highest ranking medical personnel takes charge
- Initial assessment is completed and duties are delegated
- Athletic training student or manager calls for assistance
- Athletic training student, manager, or event management staff meets the ambulance
- Coach and Event management staff works crowd control
- Emergency equipment (AED, splints, spine board, oxygen, crutches) located on home team bench

1. First Call 911 to activate Emergency Medical Services  
Call Campus Security (if called 2<sup>nd</sup>, tell them EMS has been alerted)
  - A. Identify yourself ***“My name is \_\_\_\_\_ and I am a(n) \_\_\_\_\_ at the University of Nebraska Omaha.”***
  - B. Number of individuals injured
  - C. Condition of the injured ***“We have an emergency, please send paramedics immediately for (nature of injury).”***
  - D. Care being given to the injured
  - E. Specific directions ***“We are at the hockey rink at the Civic Center on 1804 Capitol Ave. Please meet (person meeting EMS) at the northwest entrance.”***
  - F. Other information as requested
  - G. Make sure you hang up after the dispatcher
2. Send someone to meet EMS at the designated spot
3. Provide appropriate medical care until the arrival of EMS personnel and upon arrival provide pertinent information (method of injury, vital signs, treatment rendered, medical history) and assist with emergency care as needed.
4. Staff member should accompany individual to the hospital
5. Bring athlete’s medical information to the hospital
6. Contact the Staff Athletic Trainer/Team physician if not on site already
  - a. Contact information on page 2
7. Staff athletic trainer will contact athlete’s parents

**University of Nebraska Omaha**  
**Emergency Action Plan (EAP) – Golf**

**Emergency Medical Services:**

**Call From Your Cell Phone** **911**

**Campus Security**

**From a Cell Phone** **402-554-2911**

**From a University Phone** **4-2911**

**Emergency Situation Protocol:**

- Highest ranking medical personnel takes charge
- Initial assessment is completed and duties are delegated
- Athletic training student or manager calls for assistance
- Athletic training student, manager, or event management staff meets the ambulance
- Coach and Event management staff works crowd control

1. First Call 911 to activate Emergency Medical Services  
Call Campus Security (if called 2<sup>nd</sup>, tell them EMS has been alerted)
  - A. Identify yourself ***“My name is \_\_\_\_\_ and I am a(n) \_\_\_\_\_ at the University of Nebraska Omaha.”***
  - B. Number of individuals injured
  - C. Condition of the injured ***“We have an emergency, please send paramedics immediately for (nature of injury).”***
  - D. Care being given to the injured
  - E. Specific directions ***“We are at the Stone Creek Golf course at 6220 N 160<sup>th</sup> ave. Please meet - (person meeting EMS) at the front entrance and you will be directed to the injury location.”***
  - F. Other information as requested
  - G. Make sure you hang up after the dispatcher
2. Send someone to meet EMS at the designated spot
3. Provide appropriate medical care until the arrival of EMS personnel and upon arrival provide pertinent information (method of injury, vital signs, treatment rendered, medical history) and assist with emergency care as needed.
4. Staff member should accompany individual to the hospital
5. Bring athlete’s medical information to the hospital
6. Contact the Staff Athletic Trainer/Team physician if not on site already
  - a. Contact information on page 2
7. Staff athletic trainer will contact athlete’s parents

**University of Nebraska Omaha**  
**Emergency Action Plan (EAP) – Hanscom Tennis Center**

**Emergency Medical Services:**

**Call From Your Cell Phone** **911**

**Campus Security**

**From a Cell Phone** **402-554-2911**

**From a University Phone** **4-2911**

**Emergency Situation Protocol:**

- Highest ranking medical personnel takes charge
- Initial assessment is completed and duties are delegated
- Athletic training student or manager calls for assistance
- Athletic training student, manager, or event management staff meets the ambulance
- Coach and Event management staff works crowd control
- Emergency equipment (AED, splints, crutches) located on home team bench

1. First Call 911 to activate Emergency Medical Services  
Call Campus Security (if called 2<sup>nd</sup>, tell them EMS has been alerted)
  - A. Identify yourself ***“My name is \_\_\_\_\_ and I am a(n) \_\_\_\_\_ at the University of Nebraska Omaha.”***
  - B. Number of individuals injured
  - C. Condition of the injured ***“We have an emergency, please send paramedics immediately for (nature of injury).”***
  - D. Care being given to the injured
  - E. Specific directions ***“We are at the Dewey Hanscom Tennis Center located at 3200 Ed Creighton Blvd. Please meet (person meeting EMS) at the front entrance and you will be directed to court location.”***
  - F. Other information as requested
  - G. Make sure you hang up after the dispatcher
2. Send someone to meet EMS at the designated spot
3. Provide appropriate medical care until the arrival of EMS personnel and upon arrival provide pertinent information (method of injury, vital signs, treatment rendered, medical history) and assist with emergency care as needed.
4. Staff member should accompany individual to the hospital
5. Bring athlete’s medical information to the hospital
6. Contact the Staff Athletic Trainer/Team physician if not on site already
  - a. Contact information on page 2
7. Staff athletic trainer will contact athlete’s parents

**University of Nebraska Omaha**  
**Emergency Action Plan (EAP) – HPER Building**

**Emergency Medical Services:**

**Call From Your Cell Phone** **911**

**Campus Security**

**From a Cell Phone** **402-554-2911**

**From a University Phone** **4-2911**

**Emergency Situation Protocol:**

- Highest ranking medical personnel takes charge
- Initial assessment is completed and duties are delegated
- Athletic training student or manager calls for assistance
- Athletic training student, manager, or event management staff meets the ambulance
- Coach and Event management staff works crowd control
- Emergency equipment (AED, splints, crutches) located on home team bench
- Swimming facility keeps spineboard

1. First Call 911 to activate Emergency Medical Services  
Call Campus Security (if called 2<sup>nd</sup>, tell them EMS has been alerted)
  - A. Identify yourself ***“My name is \_\_\_\_\_ and I am a(n) \_\_\_\_\_ at the University of Nebraska Omaha.”***
  - B. Number of individuals injured
  - C. Condition of the injured ***“We have an emergency, please send paramedics immediately for (nature of injury).”***
  - D. Care being given to the injured
  - E. Specific directions ***“We are at the HPER building on the UNO Campus 6001 Dodge St. Please meet (person meeting EMS) at the front entrance on the northwest corner.”***
  - F. Other information as requested
  - G. Make sure you hang up after the dispatcher
2. Send someone to meet EMS at the designated spot
3. Provide appropriate medical care until the arrival of EMS personnel and upon arrival provide pertinent information (method of injury, vital signs, treatment rendered, medical history) and assist with emergency care as needed.
4. Staff member should accompany individual to the hospital
5. Bring athlete’s medical information to the hospital
6. Contact the Staff Athletic Trainer if not on site already
7. Contact the Staff Athletic Trainer/Team physician if not on site already
  - a. Contact information on page 2
8. Staff athletic trainer will contact athlete’s parents



**University of Nebraska Omaha**  
**Emergency Action Plan (EAP) – Koch Tennis Center**

**Emergency Medical Services:**

**Call From Your Cell Phone** **911**

**Campus Security**

**From a Cell Phone** **402-554-2911**

**From a University Phone** **4-2911**

**Emergency Situation Protocol:**

- Highest ranking medical personnel takes charge
- Initial assessment is completed and duties are delegated
- Athletic training student or manager calls for assistance
- Athletic training student, manager, or event management staff meets the ambulance
- Coach and Event management staff works crowd control
- Emergency equipment (AED, splints, crutches) located on home team bench

1. First Call 911 to activate Emergency Medical Services  
Call Campus Security (if called 2<sup>nd</sup>, tell them EMS has been alerted)
  - A. Identify yourself ***“My name is \_\_\_\_\_ and I am a(n) \_\_\_\_\_ at the University of Nebraska Omaha.”***
  - B. Number of individuals injured
  - C. Condition of the injured ***“We have an emergency, please send paramedics immediately for (nature of injury).”***
  - D. Care being given to the injured
  - E. Specific directions ***“We are at the Koch Tennis Center located at Tranquility Park (12440 W. Maple Road). Please meet (person meeting EMS) at the front entrance and you will be directed to court location.”***
  - F. Other information as requested
  - G. Make sure you hang up after the dispatcher
2. Send someone to meet EMS at the designated spot
3. Provide appropriate medical care until the arrival of EMS personnel and upon arrival provide pertinent information (method of injury, vital signs, treatment rendered, medical history) and assist with emergency care as needed.
4. Staff member should accompany individual to the hospital
5. Bring athlete’s medical information to the hospital
6. Contact the Staff Athletic Trainer/Team physician if not on site already
  - a. Contact information on page 2
7. Staff athletic trainer will contact athlete’s parents

**University of Nebraska Omaha**  
**Emergency Action Plan (EAP) – Ralston Arena**

**Emergency Medical Services:**

**Call From Your Cell Phone** **911**

**Campus Security**

**From a Cell Phone** **402-554-2911**  
**From a University Phone** **4-2911**

**Emergency Situation Protocol:**

- Highest ranking medical personnel takes charge
- Initial assessment is completed and duties are delegated
- Athletic training student or manager calls for assistance
- Athletic training student, manager, or event management staff meets the ambulance
- Coach and Event management staff works crowd control
- Emergency equipment (AED, splints, crutches) located on home team bench
- Spine board located in athletic training room

1. First Call 911 to activate Emergency Medical Services  
Call Campus Security (if called 2<sup>nd</sup>, tell them EMS has been alerted)
  - A. Identify yourself ***“My name is \_\_\_\_\_ and I am a(n) \_\_\_\_\_ at the University of Nebraska Omaha.”***
  - B. Number of individuals injured
  - C. Condition of the injured ***“We have an emergency, please send paramedics immediately for (nature of injury).”***
  - D. Care being given to the injured
  - E. Specific directions ***“We are at the Ralston Arena at 7300 Q St. Please meet (person meeting EMS) at the Northwest loading dock and you will be directed to the injury location.”***
  - F. Other information as requested
  - G. Make sure you hang up after the dispatcher
2. Send someone to meet EMS at the designated spot
3. Provide appropriate medical care until the arrival of EMS personnel and upon arrival provide pertinent information (method of injury, vital signs, treatment rendered, medical history) and assist with emergency care as needed.
4. Staff member should accompany individual to the hospital
5. Bring athlete’s medical information to the hospital
6. Contact the Staff Athletic Trainer/Team physician if not on site already
  - a. Contact information on page 2
7. Staff athletic trainer will contact athlete’s parents

**University of Nebraska Omaha**  
**Emergency Action Plan (EAP) – Sapp Fieldhouse**

**Emergency Medical Services:**

**Call From Your Cell Phone** **911**

**Campus Security**

**From a Cell Phone** **402-554-2911**

**From a University Phone** **4-2911**

**Emergency Situation Protocol:**

- Highest ranking medical personnel takes charge
- Initial assessment is completed and duties are delegated
- Athletic training student or manager calls for assistance
- Athletic training student, manager, or event management staff meets the ambulance
- Coach and Event management staff works crowd control
- Emergency equipment (AED, splints, crutches) located on home team bench
- Spine board located in taping room

1. First Call 911 to activate Emergency Medical Services  
Call Campus Security (if called 2<sup>nd</sup>, tell them EMS has been alerted)
  - A. Identify yourself ***“My name is \_\_\_\_\_ and I am a(n) \_\_\_\_\_ at the University of Nebraska Omaha.”***
  - B. Number of individuals injured
  - C. Condition of the injured ***“We have an emergency, please send paramedics immediately for (nature of injury).”***
  - D. Care being given to the injured
  - E. Specific directions ***“We are in the Sapp Fieldhouse on the UNO campus at 6001 Dodge Street. Please meet (person meeting EMS) at the front entrance on the northwest corner of the Sapp Fieldhouse.”***
  - F. Other information as requested
  - G. Make sure you hang up after the dispatcher
2. Send someone to meet EMS at the designated spot
3. Provide appropriate medical care until the arrival of EMS personnel and upon arrival provide pertinent information (method of injury, vital signs, treatment rendered, medical history) and assist with emergency care as needed.
4. Staff member should accompany individual to the hospital
5. Bring athlete’s medical information to the hospital
6. Contact the Staff Athletic Trainer/Team physician if not on site already
  - a. Contact information on page 2
7. Staff athletic trainer will contact athlete’s parents

**University of Nebraska Omaha**  
**Emergency Action Plan (EAP) – Soccer Pitch**

**Emergency Medical Services:**

**Call From Your Cell Phone** **911**

**Campus Security**

**From a Cell Phone** **402-554-2911**

**From a University Phone** **4-2911**

**Emergency Situation Protocol:**

- Highest ranking medical personnel takes charge
- Initial assessment is completed and duties are delegated
- Athletic training student or manager calls for assistance
- Athletic training student, manager, or event management staff meets the ambulance
- Coach and Event management staff works crowd control
- Emergency equipment (AED, splints, spine board, crutches) located on home team bench

1. First Call 911 to activate Emergency Medical Services  
Call Campus Security (if called 2<sup>nd</sup>, tell them EMS has been alerted)
  - A. Identify yourself ***“My name is \_\_\_\_\_ and I am a(n) \_\_\_\_\_ at the University of Nebraska Omaha.”***
  - B. Number of individuals injured
  - C. Condition of the injured ***“We have an emergency, please send paramedics immediately for (nature of injury).”***
  - D. Care being given to the injured
  - E. Specific directions ***“We are at the soccer pitch on the UNO campus at 6001 Dodge Street. Please meet (person meeting EMS) at the entrance to the field on the southwest corner of the soccer pitch.”***
  - F. Other information as requested
  - G. Make sure you hang up after the dispatcher
2. Send someone to meet EMS at the designated spot
3. Provide appropriate medical care until the arrival of EMS personnel and upon arrival provide pertinent information (method of injury, vital signs, treatment rendered, medical history) and assist with emergency care as needed.
4. Staff member should accompany individual to the hospital
5. Bring athlete’s medical information to the hospital
6. Contact the Staff Athletic Trainer/Team physician if not on site already
  - a. Contact information on page 2
7. Staff athletic trainer will contact athlete’s parents

**University of Nebraska Omaha**  
**Emergency Action Plan (EAP) – Weight Room**

**Emergency Medical Services:**

**Call From Your Cell Phone** **911**

**Campus Security**

**From a Cell Phone** **402-554-2911**

**From a University Phone** **4-2911**

**Emergency Situation Protocol:**

- Highest ranking medical personnel takes charge
- Initial assessment is completed and duties are delegated
- Athletic training student or manager calls for assistance
- Athletic training student, manager, or event management staff meets the ambulance
- Coach and Event management staff works crowd control
- Emergency equipment (splints, spine board, oxygen, crutches) located in the taping room
- AED located in the weight room

1. First Call 911 to activate Emergency Medical Services  
Call Campus Security (if called 2<sup>nd</sup>, tell them EMS has been alerted)
  - A. Identify yourself ***“My name is \_\_\_\_\_ and I am a(n) \_\_\_\_\_ at the University of Nebraska Omaha.”***
  - B. Number of individuals injured
  - C. Condition of the injured ***“We have an emergency, please send paramedics immediately for (nature of injury).”***
  - D. Care being given to the injured
  - E. Specific directions ***“We are at the weight room located in the Sapp Fieldhouse on UNO’s campus at 6001 Dodge St. Please meet (person meeting EMS) at the front entrance on the northwest corner.”***
  - F. Other information as requested
  - G. Make sure you hang up after the dispatcher
2. Send someone to meet EMS at the designated spot
3. Provide appropriate medical care until the arrival of EMS personnel and upon arrival provide pertinent information (method of injury, vital signs, treatment rendered, medical history) and assist with emergency care as needed.
4. Staff member should accompany individual to the hospital
5. Bring athlete’s medical information to the hospital
6. Contact the Staff Athletic Trainer/Team physician if not on site already
  - a. Contact information on page 2
7. Staff athletic trainer will contact athlete’s parents

**University of Nebraska Omaha**  
**Emergency Action Plan (EAP) – Westbrook Elementary Softball**

**Emergency Medical Services:**

**Call From Your Cell Phone** **911**

**Campus Security**

**From a Cell Phone** **402-554-2911**

**From a University Phone** **4-2911**

**Emergency Situation Protocol:**

- Highest ranking medical personnel takes charge
- Initial assessment is completed and duties are delegated
- Athletic training student or manager calls for assistance
- Athletic training student, manager, or event management staff meets the ambulance
- Coach and Event management staff works crowd control
- Emergency equipment (AED, splints, crutches) located on home team bench

1. First Call 911 to activate Emergency Medical Services  
Call Campus Security (if called 2<sup>nd</sup>, tell them EMS has been alerted)
  - A. Identify yourself ***“My name is \_\_\_\_\_ and I am a(n) \_\_\_\_\_ at the University of Nebraska Omaha.”***
  - B. Number of individuals injured
  - C. Condition of the injured ***“We have an emergency, please send paramedics immediately for (nature of injury).”***
  - D. Care being given to the injured
  - E. Specific directions ***“We are at the Westside Field at Hillside located at 80th & Western, behind Westbrook Elementary School. Please meet (person meeting EMS) at either the left field gate or the 3<sup>rd</sup> base gate.”***
  - F. Other information as requested
  - G. Make sure you hang up after the dispatcher
2. Send someone to meet EMS at the designated spot
3. Provide appropriate medical care until the arrival of EMS personnel and upon arrival provide pertinent information (method of injury, vital signs, treatment rendered, medical history) and assist with emergency care as needed.
4. Staff member should accompany individual to the hospital
5. Bring athlete’s medical information to the hospital
6. Contact the Staff Athletic Trainer/Team physician if not on site already
  - a. Contact information on page 2
7. Staff athletic trainer will contact athlete’s parents

**University of Nebraska Omaha**  
**Contact Information**

**Emergency Medical Services**

**From Cell : 911**

**Campus Security**

**From Campus Land line: 4-2911**

**From Cell: 402-554-2911**

**Hospitals**

**Methodist Hospital**

8303 Dodge St., 68114

ER: 402-354-4424

F: 402-354-4435

**UNMC**

981150 Nebraska Medical Ctr., 68198

ER: 402-559-5413

F: 402-559-9659

**Urgent Care**

**Rockbrook Urgent Care**

2821 S. 108<sup>th</sup> Street, #3

Omaha, NE 68144

O: 402-933-8201

Hours: 8am – 8pm Monday - Saturday

10am – 6pm Sunday

**Midwest Minor Medical**

8610 West Dodge Road

Omaha, NE 68114

O: 402-827-6511

Hours: 8am – 9 PM Sunday - Saturday

**Team Physician**

**Matt Beacom, M.D.**

O: 402-554-2774

C: 402-957-0965

**Sports Medicine Staff**

**Masayasu “Masa” Takaiwa –Hockey/Golf**

O: 402-554-3783

C: 402-290-3651

**Phil Dennie – Men’s Soccer/Women’s Softball**

O: 402-554-4997

C: 218-310-4281

**Mike Nicola – Men’s Basketball/Tennis**

O: 402-554-3184

C: 402-598-3474

**Lauren Rawson – Women’s Soccer/Cross**

**Country/Track&Field**

O: 402-554-4997

C: 407-595-6527

**Tony Taylor – Volleyball/Swimming&Diving/Baseball**

O: 402-554-3278

C: 402-594-4953

**Jo Gundrum – Women’s Basketball/Tennis**

O: 402-554-3174

C: 402-216-9740