



UNIVERSITY OF NEBRASKA AT OMAHA

# DODGE CAMPUS PARKING MAP

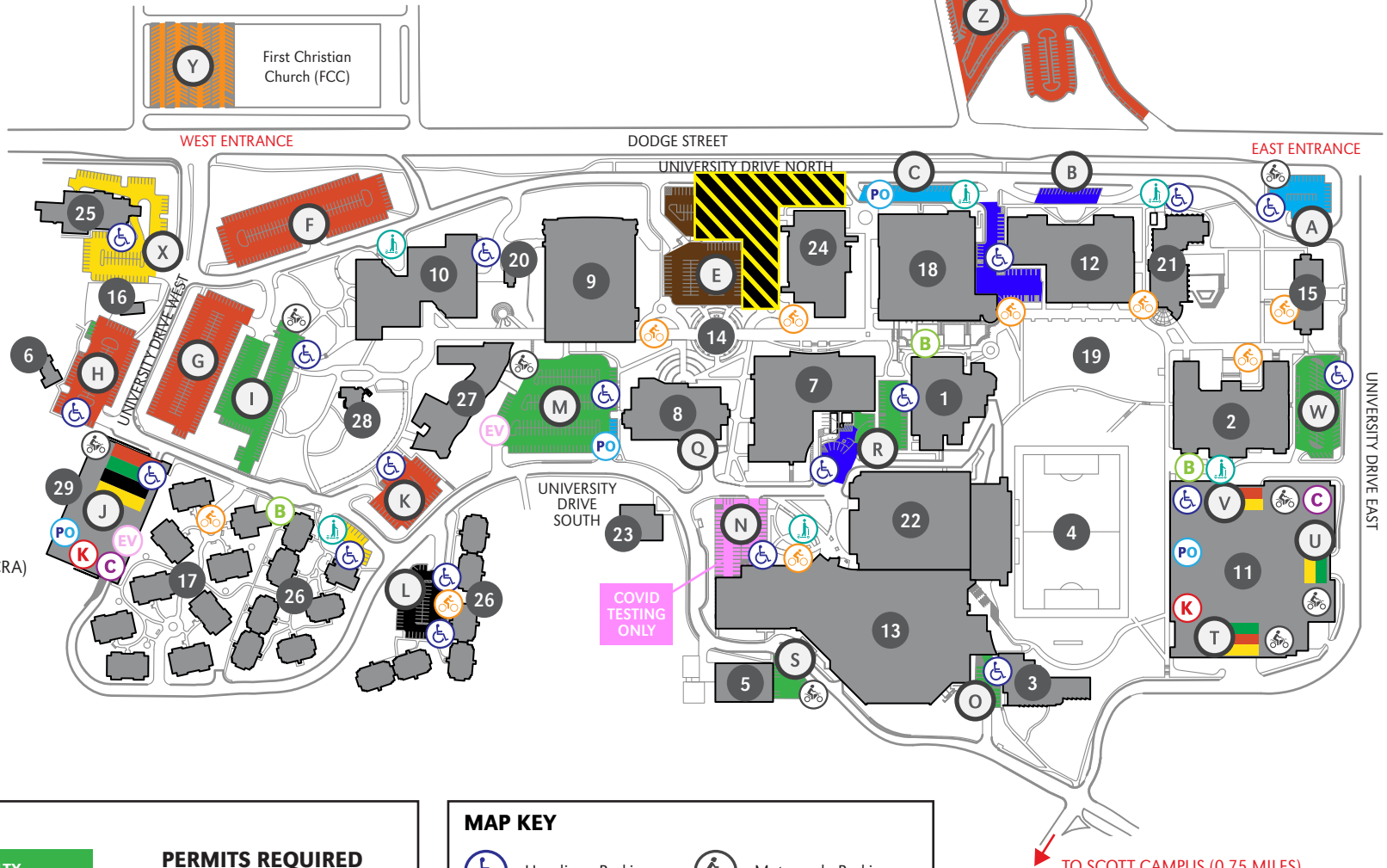
402.554.2800 | unomaha.edu

UPDATED 09-08-20



## BUILDING KEY

- 1 Allwine Hall (AH)
- 2 Arts & Sciences Hall (ASH)
- 3 Biomechanics Research Building (BRB)
- 4 Caniglia Field (CF)
- 5 Central Utilities Plant (CUP)
- 6 Child Care Center (CCC)
- 7 College of Public Affairs & Community Service (CPACS)
- 8 Barbara Weitz Community Engagement Center (Weitz CEC)
- 9 Criss Library (CL)
- 10 Durham Science Center (DSC)
- 11 East Parking Garage (EPG)
  - Lot T - Lower Level
  - Lot U - Middle Level
  - Lot V - Upper Level
- 12 Eppley Administration Building (EAB)
- 13 Health & Kinesiology Building (H&K)
- 14 Henningson Memorial Campanile (HMC) (clock tower)
- 15 Kayser Hall (KH)
- 16 Landscape Services (LS)
- 17 Maverick Village (MV)
- 18 Milo Bail Student Center (MBSC)
- 19 Pep Bowl (open space)
- 20 Resource Conservation & Recovery Area (RCRA)
- 21 Roskens Hall (RH)
- 22 Sapp Fieldhouse (SFH)
- 23 Sculpture & Ceramics Studio (SCS)
- 24 Strauss Performing Arts Center (SPAC)
- 25 Thompson Alumni Center (TAC)
- 26 University Village (UV)
- 27 Weber Fine Arts Building (WFAB)
- 28 6533 University Drive South (WC)
- 29 West Parking Garage (WPG)



## PARKING KEY

STUDENT	FACULTY
F/S/S SURFACE PERMITS	VISITOR (NO UNO)
RESERVED (NO F/S/S)	CEC VISITOR
EVENT PARKING	MV/UV RESIDENT
PARK OMAHA ONLY	CONSTRUCTION

## PERMITS REQUIRED

Faculty/Staff/Stud.

Surface Lots:

7 A.M. to 7 P.M. (M-TH)

7 A.M. to 5 P.M. (F)

Garages:

7 A.M. to 7 P.M. (M-TH)

## MAP KEY

Handicap Parking	Motorcycle Parking
Park Omaha	Bicycle Racks
Kiosks	Scooter Drop-off
Carpool	B-Cycle Station
EV Charging Station	

\* Parking permit types are assigned to specific surface lots, garages, and/or garage levels.  
It is the responsibility of the permit holder to know which designated areas their permit is valid in.

TO SCOTT CAMPUS (0.75 MILES)  
18 MIN WALK | 5 MIN BIKE

UNIVERSITY OF  
**Nebraska**  
Omaha

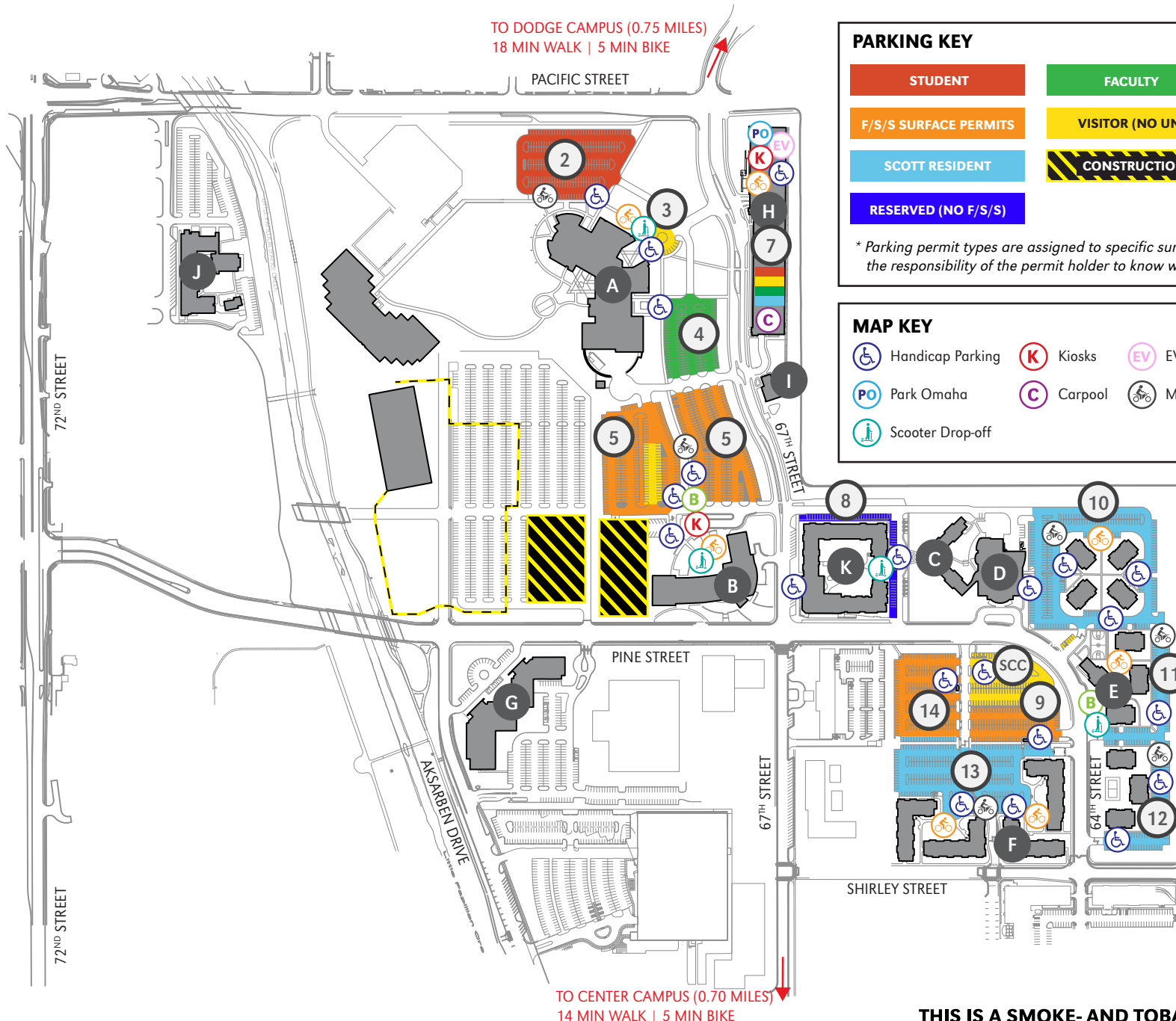
**THIS IS A SMOKE- AND TOBACCO-FREE  
CAMPUS AS OF 8/22/16**



# UNIVERSITY OF NEBRASKA AT OMAHA SCOTT CAMPUS PARKING MAP

402.554.2800 | unomaha.edu

UPDATED 04-29-21



## PARKING KEY

STUDENT
F/S/S SURFACE PERMITS
SCOTT RESIDENT
RESERVED (NO F/S/S)

FACULTY
VISITOR (NO UNO)
CONSTRUCTION

## PERMITS REQUIRED

Faculty/Staff/Stud.  
Surface Lots:  
7 A.M. to 7 P.M. (M-TH)

Garage:  
7 A.M. to 7 P.M. (M-TH)

\* Parking permit types are assigned to specific surface lots, garages, and/or garage levels. It is the responsibility of the permit holder to know which designated areas their permit is valid in.

## MAP KEY

Handicap Parking	Kiosks	EV Charging Station	Bicycle Racks
Park Omaha	Carpool	Motorcycle Parking	B-Cycle Station
Scooter Drop-off			

## BUILDING KEY

A	Peter Kiewit Institute (PKI)
B	Mammel Hall (MH)
C	Scott Residence Hall (SRH)
D	Scott Conference Center (SCC)
E	Scott Village (SV)
F	Scott Court (SC)
G	Scott Technology Center (STC)
H	Pacific Street Garage (PSG)
I	Parking Services (PS)
J	Newman Center (NC)
K	Maverick Landing/ Scott Crossing

UNIVERSITY OF  
**Nebraska**  
Omaha

THIS IS A SMOKE- AND TOBACCO-FREE CAMPUS AS OF 8/22/16

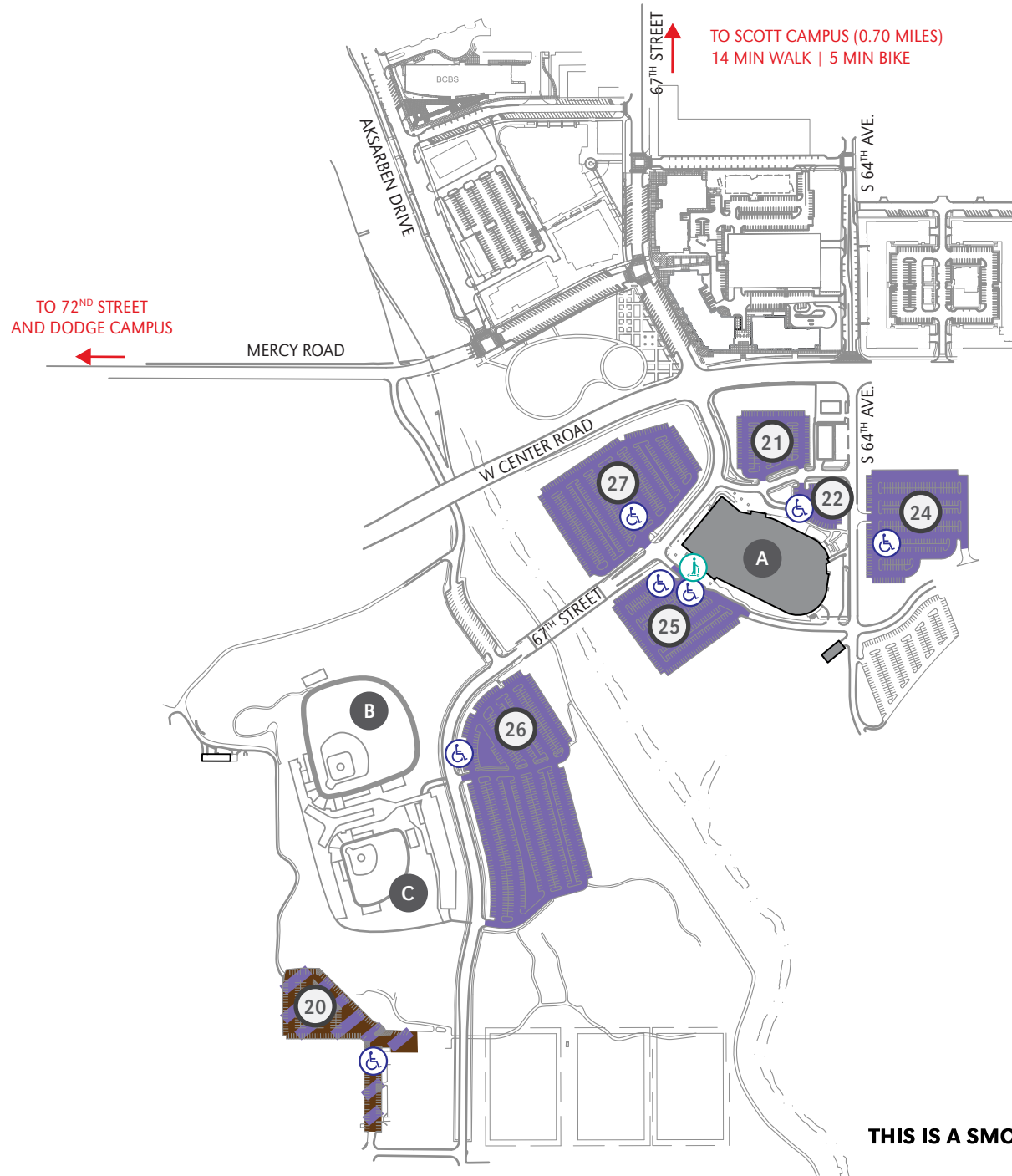


UNIVERSITY OF NEBRASKA AT OMAHA

# CENTER CAMPUS PARKING MAP

402.554.2800 | unomaha.edu

UPDATED 04-29-21



## PARKING KEY

EVENT PARKING

NO PERMITS REQUIRED

\* Parking permit types are assigned to specific surface lots, garages, and/or garage levels. It is the responsibility of the permit holder to know which designated areas their permit is valid in.

## MAP KEY

- Handicap Parking
- Scooter Drop-off

## BUILDING KEY

- A Baxter Arena
- B Tal Anderson Field
- C Connie Claussen Field

UNIVERSITY OF  
**Nebraska**  
Omaha

THIS IS A SMOKE- AND TOBACCO-FREE CAMPUS AS OF 8/22/16