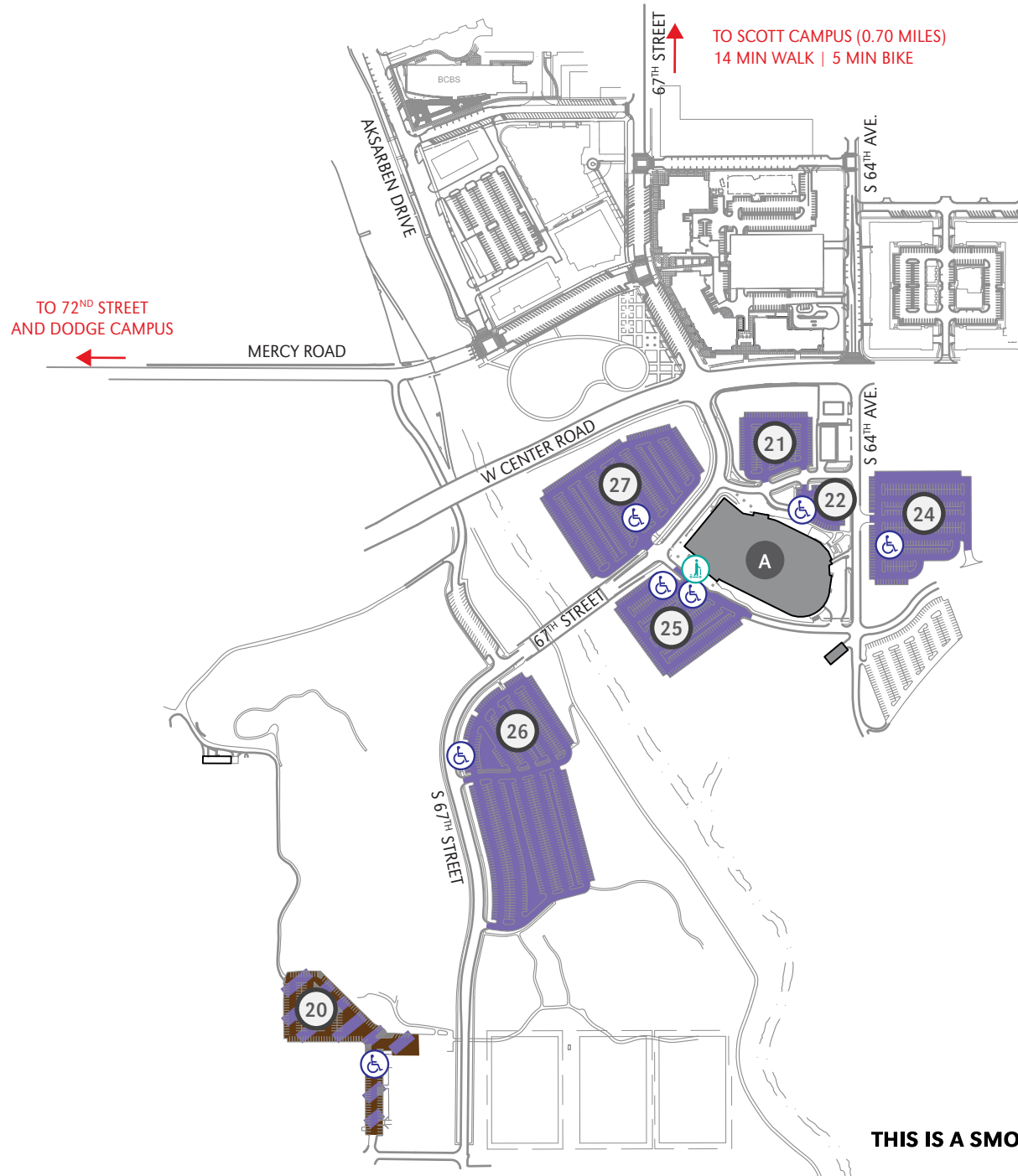




# UNIVERSITY OF NEBRASKA AT OMAHA CENTER CAMPUS PARKING MAP

402.554.2800 | unomaha.edu

UPDATED 08-05-20



### PARKING KEY

EVENT PARKING

NO PERMITS REQUIRED

\* Parking permit types are assigned to specific surface lots, garages, and/or garage levels. It is the responsibility of the permit holder to know which designated areas their permit is valid in.

### MAP KEY

- Handicap Parking
- Scooter Drop-off

### BUILDING KEY

A Baxter Arena

UNIVERSITY OF  
**Nebraska**  
Omaha

THIS IS A SMOKE- AND TOBACCO-FREE CAMPUS AS OF 8/22/16