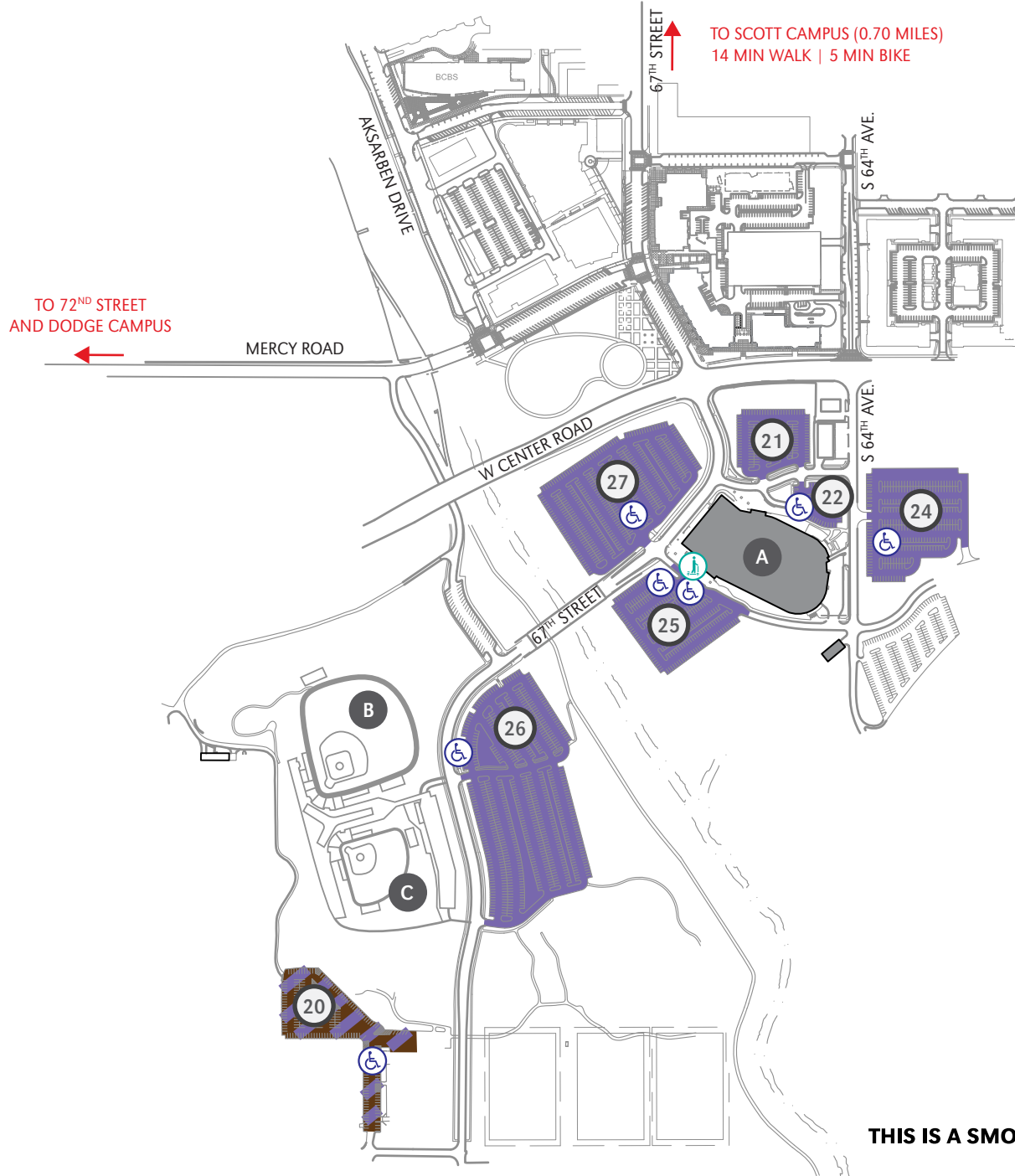




UNIVERSITY OF NEBRASKA AT OMAHA CENTER CAMPUS PARKING MAP

402.554.2800 | unomaha.edu

UPDATED 04-29-21



PARKING KEY

EVENT PARKING

NO PERMITS REQUIRED

* Parking permit types are assigned to specific surface lots, garages, and/or garage levels. It is the responsibility of the permit holder to know which designated areas their permit is valid in.

MAP KEY

Handicap Parking

Scooter Drop-off

BUILDING KEY

- A Baxter Arena
- B Tal Anderson Field
- C Connie Claussen Field

UNIVERSITY OF
Nebraska
Omaha

THIS IS A SMOKE- AND TOBACCO-FREE CAMPUS AS OF 8/22/16