



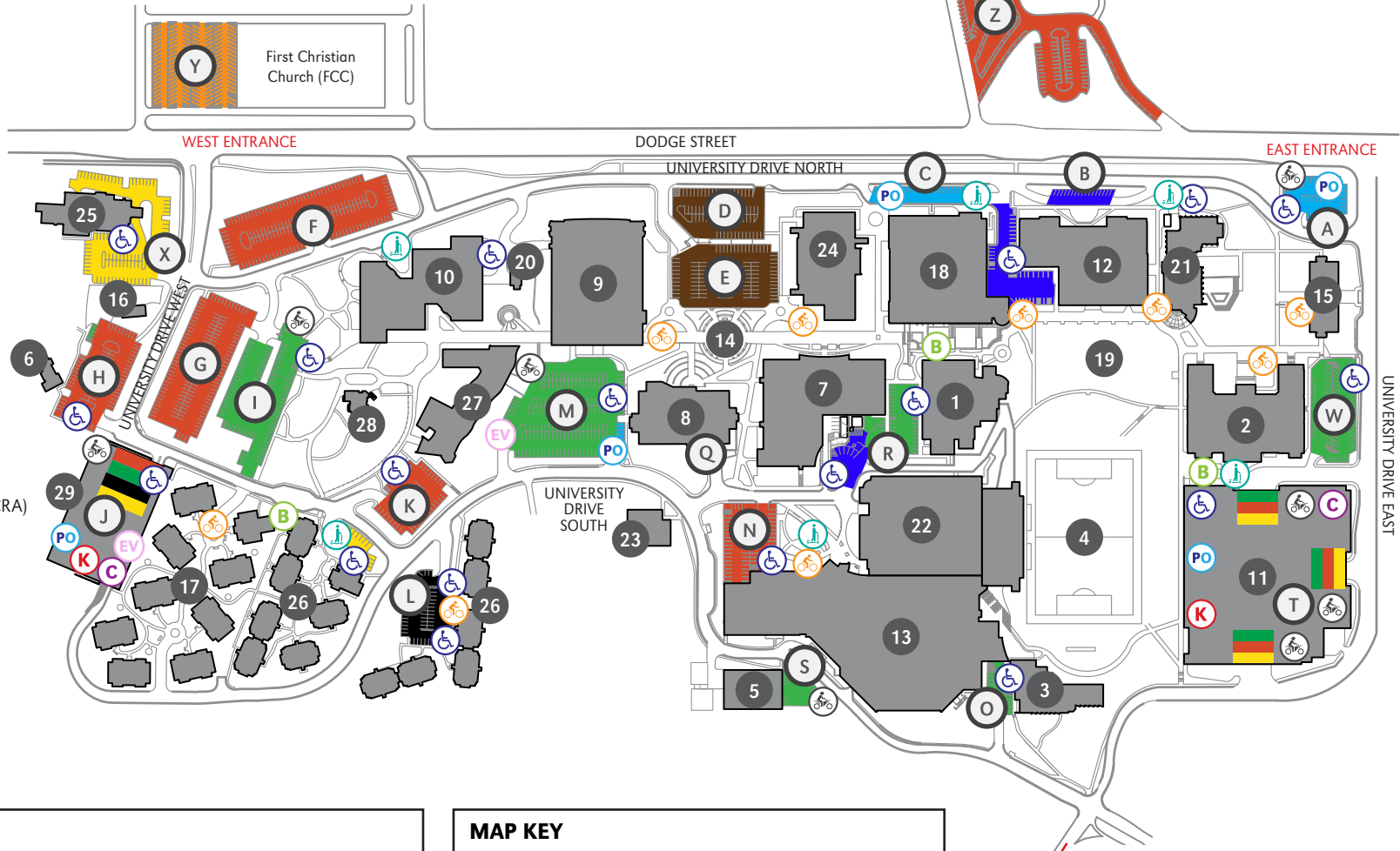
UNIVERSITY OF NEBRASKA AT OMAHA DODGE CAMPUS PARKING MAP

402.554.2800 | unomaha.edu | updated 07-12-21



BUILDING KEY

- 1 Allwine Hall (AH)
- 2 Arts & Sciences Hall (ASH)
- 3 Biomechanics Research Building (BRB)
- 4 Caniglia Field (CF)
- 5 Central Utilities Plant (CUP)
- 6 Child Care Center (CCC)
- 7 College of Public Affairs & Community Service (CPACS)
- 8 Barbara Weitz Community Engagement Center (Weitz CEC)
- 9 Criss Library (CL)
- 10 Durham Science Center (DSC)
- 11 East Parking Garage (EPG)
- 12 Eppley Administration Building (EAB)
- 13 Health & Kinesiology Building (H&K)
- 14 Henningson Memorial Campanile (HMC) (clock tower)
- 15 Kayser Hall (KH)
- 16 Landscape Services (LS)
- 17 Maverick Village (MV)
- 18 Milo Bail Student Center (MBSC)
- 19 Pep Bowl (open space)
- 20 Resource Conservation & Recovery Area (RCRA)
- 21 Roskens Hall (RH)
- 22 Sapp Fieldhouse (SFH)
- 23 Sculpture & Ceramics Studio (SCS)
- 24 Strauss Performing Arts Center (SPAC)
- 25 Thompson Alumni Center (TAC)
- 26 University Village (UV)
- 27 Weber Fine Arts Building (WFAB)
- 28 6533 University Drive South (WC)
- 29 West Parking Garage (WPG)



PARKING KEY

STUDENT	FACULTY
F/S/S SURFACE PERMITS	VISITOR (NO UNO)
RESERVED (NO F/S/S)	CEC VISITOR
EVENT PARKING	MV/UV RESIDENT
PARK OMAHA ONLY	CONSTRUCTION

PERMITS REQUIRED

Faculty/Staff/Stud.
Surface Lots:
 7 A.M. to 7 P.M. (M-TH)
 7 A.M. to 5 P.M. (F)

Garages:
 7 A.M. to 7 P.M. (M-TH)

MAP KEY

- Handicap Parking
- Motorcycle Parking
- Park Omaha
- Bicycle Racks
- Kiosks
- Scooter Drop-off
- Carpool
- B-Cycle Station
- EV Charging Station

TO SCOTT CAMPUS (0.75 MILES)
 18 MIN WALK | 5 MIN BIKE

UNIVERSITY OF
Nebraska
 Omaha

THIS IS A SMOKE- AND TOBACCO-FREE CAMPUS AS OF 8/22/16

* Parking permit types are assigned to specific surface lots, garages, and/or garage levels. It is the responsibility of the permit holder to know which designated areas their permit is valid in.

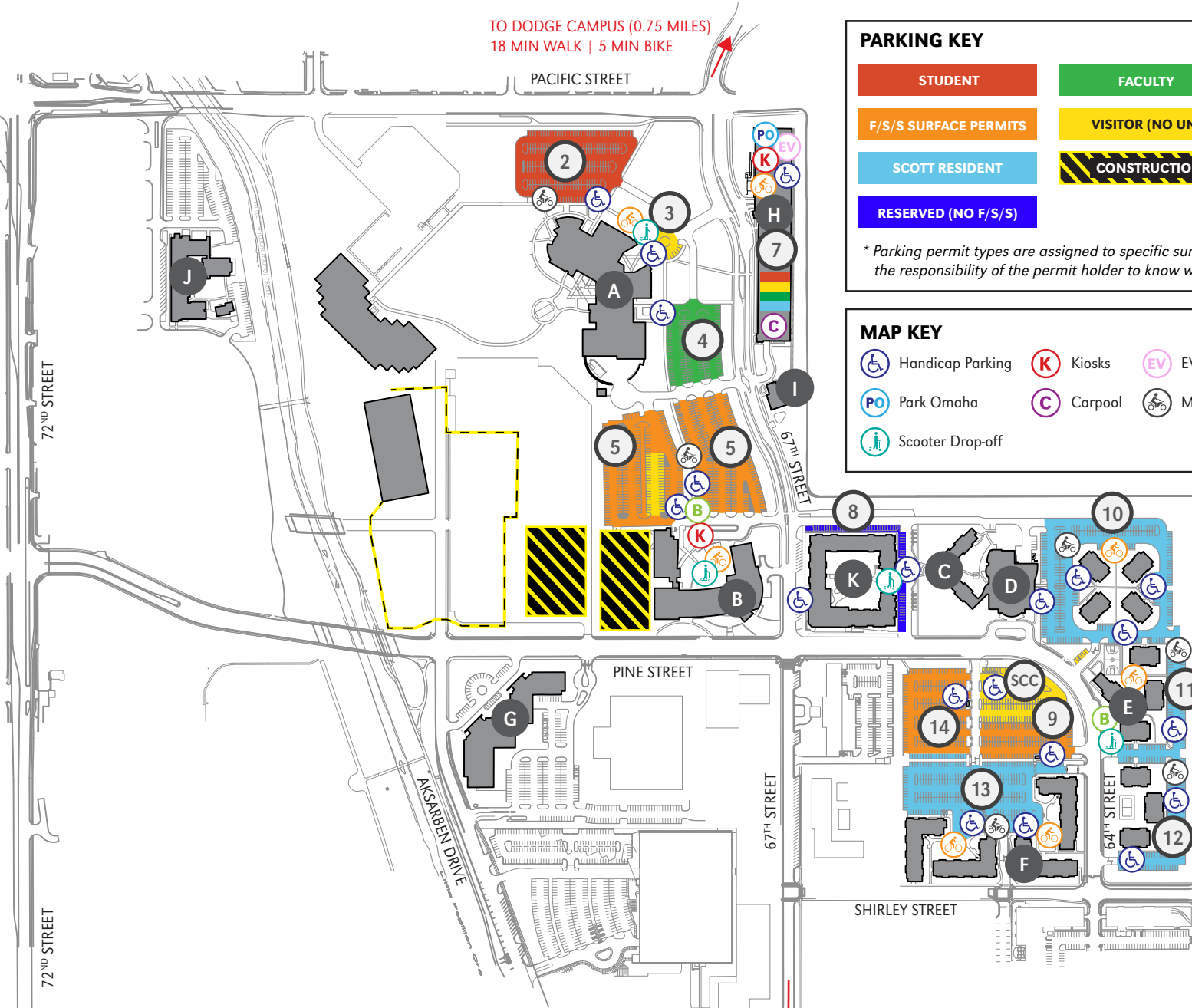


UNIVERSITY OF NEBRASKA AT OMAHA SCOTT CAMPUS PARKING MAP

402.554.2800 | unomaha.edu | updated 07-12-21



TO DODGE CAMPUS (0.75 MILES)
18 MIN WALK | 5 MIN BIKE



PARKING KEY

STUDENT	FACULTY
F/S/S SURFACE PERMITS	VISITOR (NO UNO)
SCOTT RESIDENT	CONSTRUCTION
RESERVED (NO F/S/S)	

PERMITS REQUIRED

Faculty/Staff/Stud.
Surface Lots:
7 A.M. to 7 P.M. (M-TH)

Garage:
7 A.M. to 7 P.M. (M-TH)

* Parking permit types are assigned to specific surface lots, garages, and/or garage levels. It is the responsibility of the permit holder to know which designated areas their permit is valid in.

MAP KEY

Handicap Parking	Kiosks	EV Charging Station	Bicycle Racks
Park Omaha	Carpool	Motorcycle Parking	B-Cycle Station
Scooter Drop-off			

BUILDING KEY

- A Peter Kiewit Institute (PKI)
- B Mammel Hall (MH)
- C Scott Residence Hall (SRH)
- D Scott Conference Center (SCC)
- E Scott Village (SV)
- F Scott Court (SC)
- G Scott Technology Center (STC)
- H Pacific Street Garage (PSG)
- I Parking Services (PS)
- J Newman Center (NC)
- K Maverick Landing/Scott Crossing

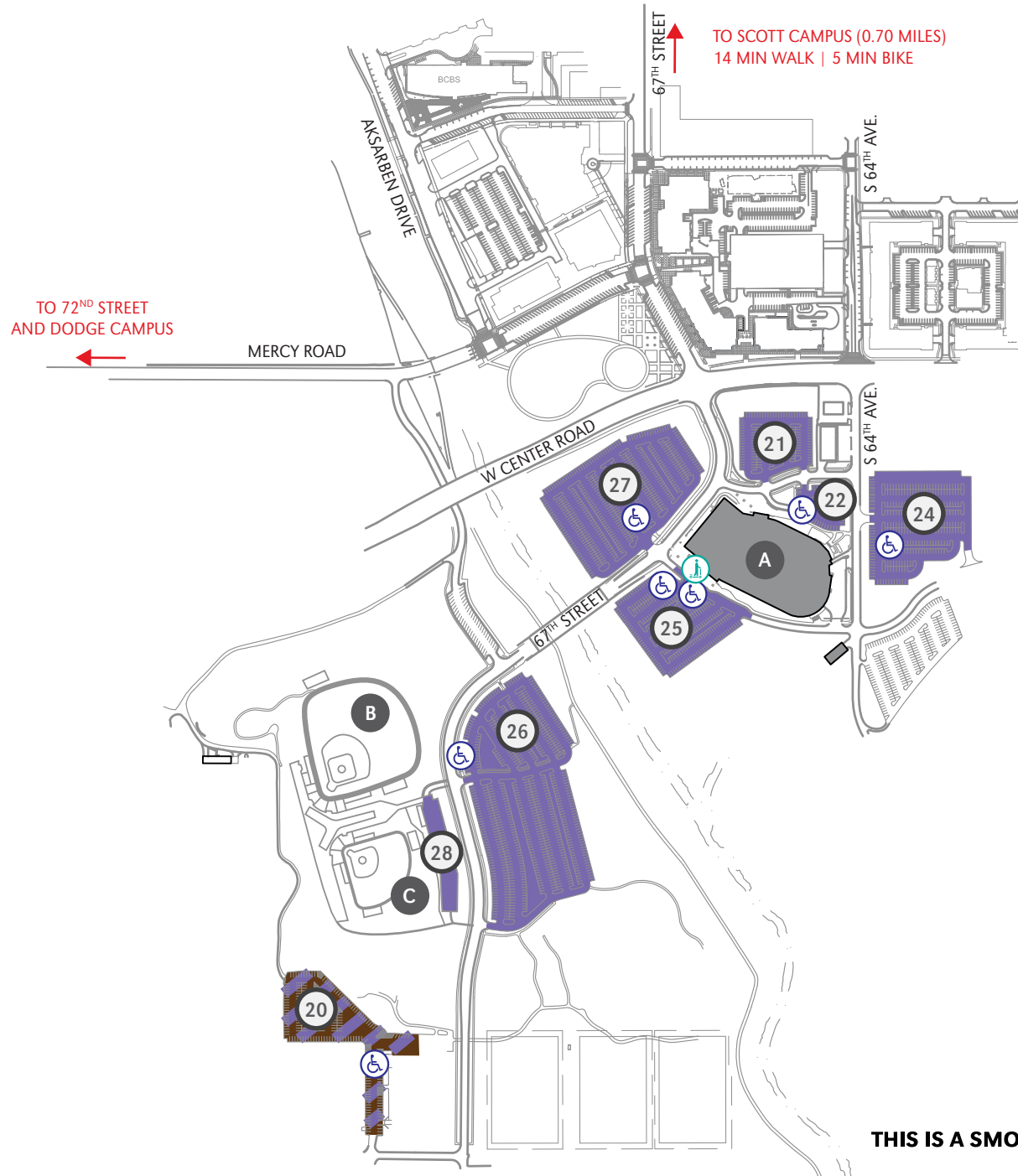
TO BAXTER ARENA (0.70 MILES)
14 MIN WALK | 5 MIN BIKE

THIS IS A SMOKE- AND TOBACCO-FREE CAMPUS AS OF 8/22/16



UNIVERSITY OF NEBRASKA AT OMAHA
SCOTT CAMPUS PARKING MAP

402.554.2800 | unomaha.edu | updated 07-12-21



PARKING KEY

EVENT PARKING

NO PERMITS REQUIRED

* Parking permit types are assigned to specific surface lots, garages, and/or garage levels. It is the responsibility of the permit holder to know which designated areas their permit is valid in.

MAP KEY

- Handicap Parking
- Scooter Drop-off

BUILDING KEY

- A Baxter Arena
- B Tal Anderson Field
- C Connie Claussen Field



THIS IS A SMOKE- AND TOBACCO-FREE CAMPUS AS OF 8/22/16