

An Update on the Latest Census Data

Data Resources Committee: 12-7-11

David Drozd, M.S.

Center for Public Affairs Research

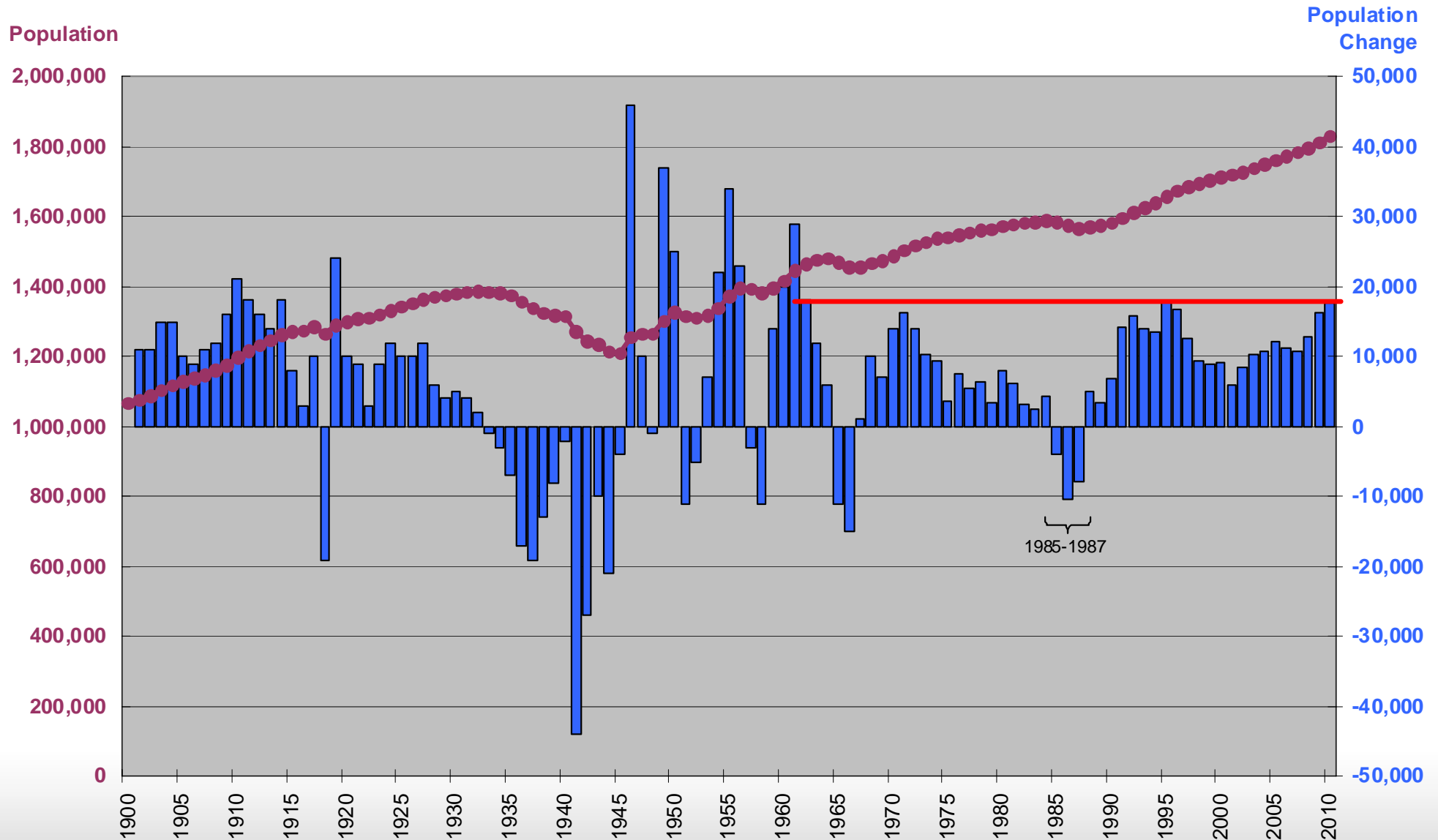
University of Nebraska Omaha

www.unomaha.edu/cpar

402-554-2132; ddrozd@unomaha.edu

Nebraska performing well from a population standpoint!

Yearly Nebraska Population and Annual Population Change: 1900 to 2010



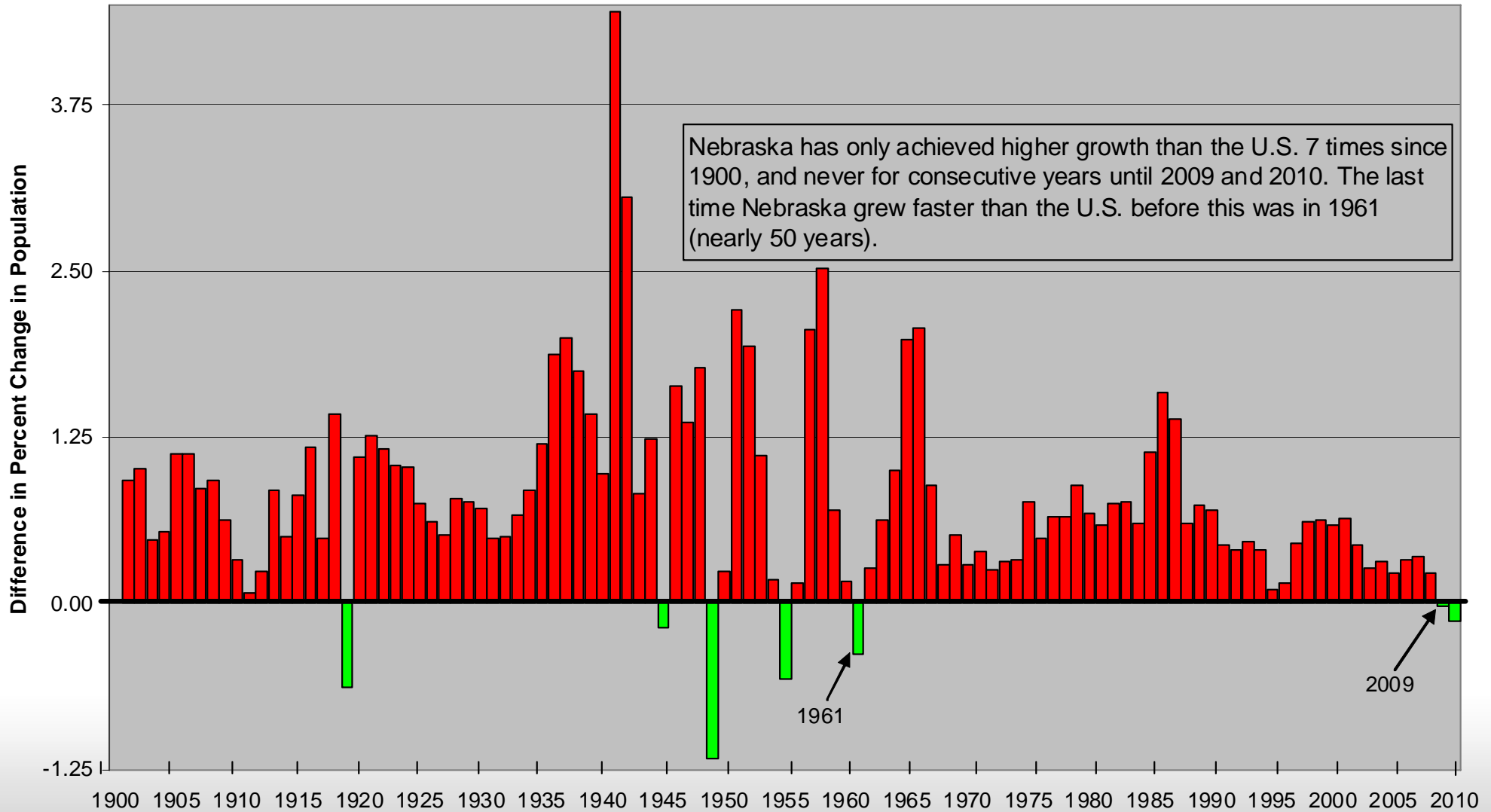
Sources: Annual Population Estimates, U.S. Census Bureau; REIS, Bureau of Economic Analysis

Annual Population Change Total Population

Compiled and Prepared by: Center for Public Affairs Research, UNO

Nebraska exceeding U.S. growth rate is rare!!

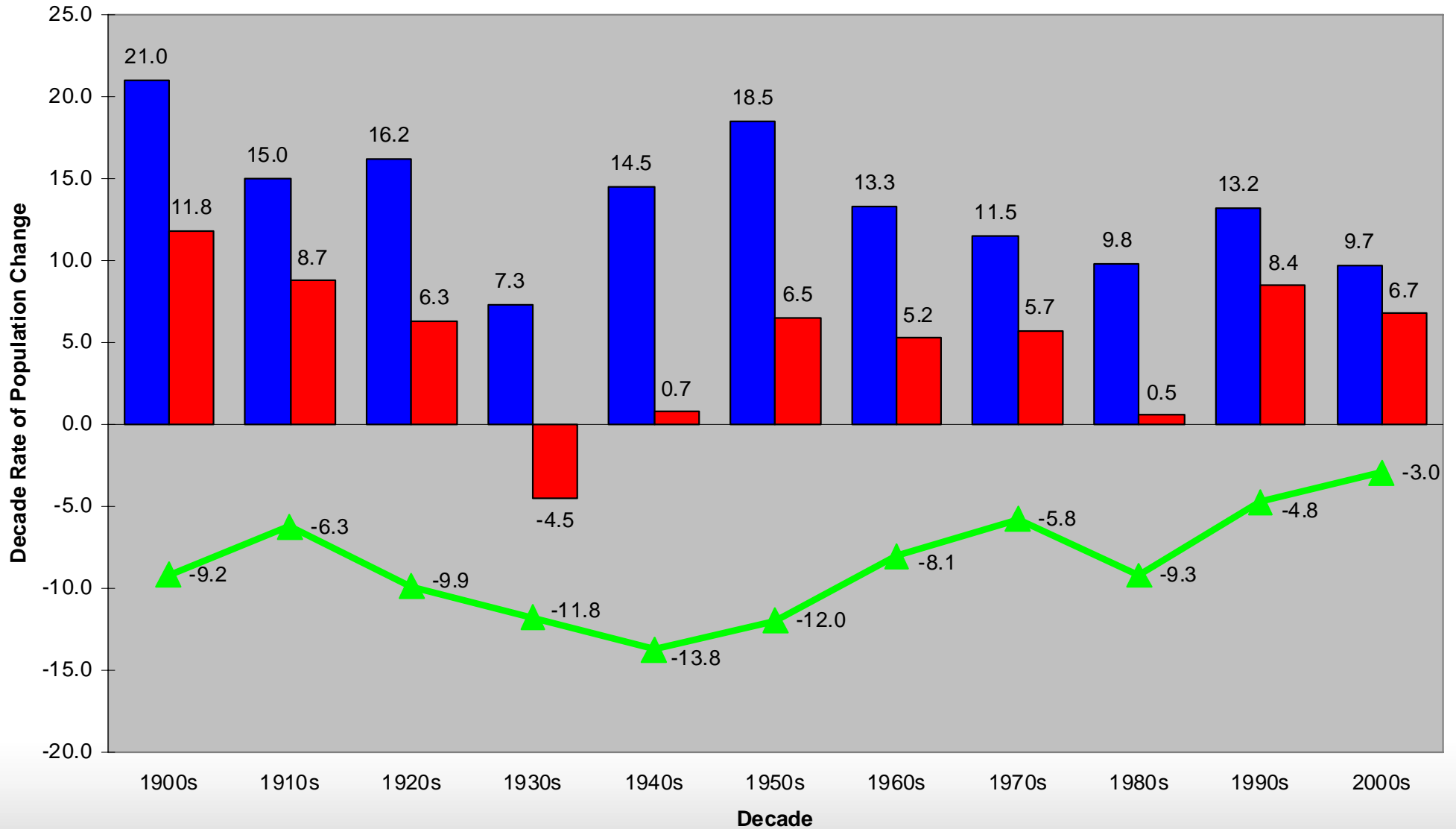
Annual Difference Between the U.S. and Nebraska Percent Change in Population: 1900 to 2010



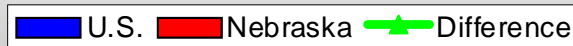
Sources: Annual Population Estimates (released 9-28-2011), U.S. Census Bureau; REIS, Bureau of Economic Analysis

Nebraska has traditionally trailed the U.S. growth rate, but generally improving since the 1940s

Comparison of Population Change Rates in Nebraska and the U.S.: 1900s to 2000s decades



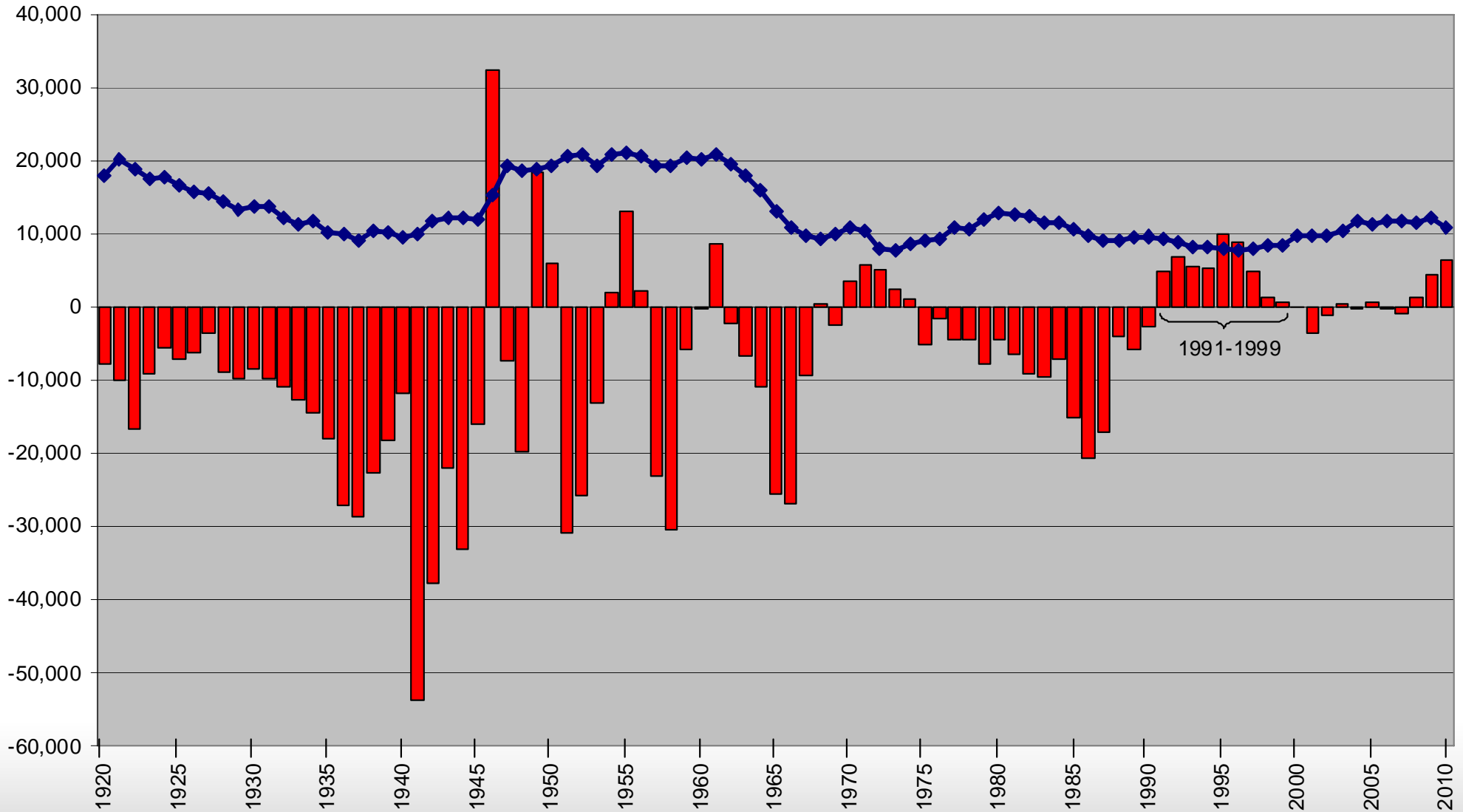
Sources: Decennial Censuses, U.S. Census Bureau



Comparison of Number of Congressional Seats from Last Nebraska Seat to 435 cutoff

<u>Year</u>	<u>NE 3rd Seat #</u>	<u>Distance to 435</u>	
1960	316	119	
1970	337	98	-21
1980	358	77	-21
1990	388	47	-30
2000	405	30	-17
2010	417	18	-12
2020	???	Danger of losing House seat!	

Nebraska Components of Population Change, 1920-2010

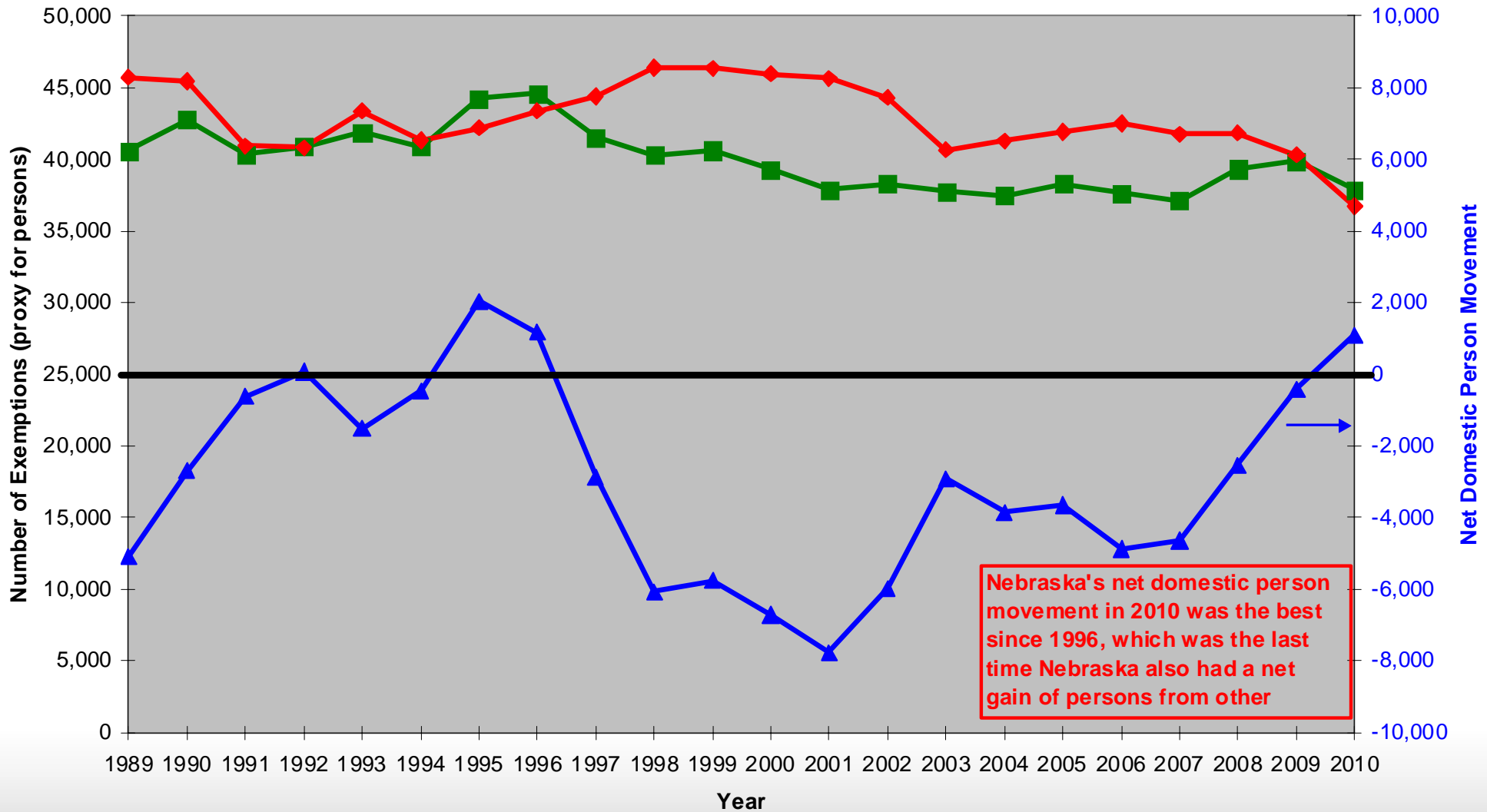


Source: Vital Statistics, Nebraska Department of Health and Human Services; Annual Population Estimates, U.S. Census Bureau - released 9-28-11

Net Migration Natural Change

Net Domestic Migration Positive for 1st time since mid 1990s

Comparison of Nebraska Domestic Inflows, Outflows, and Net Person Movement Based on IRS Tax Filings: 1989-2010



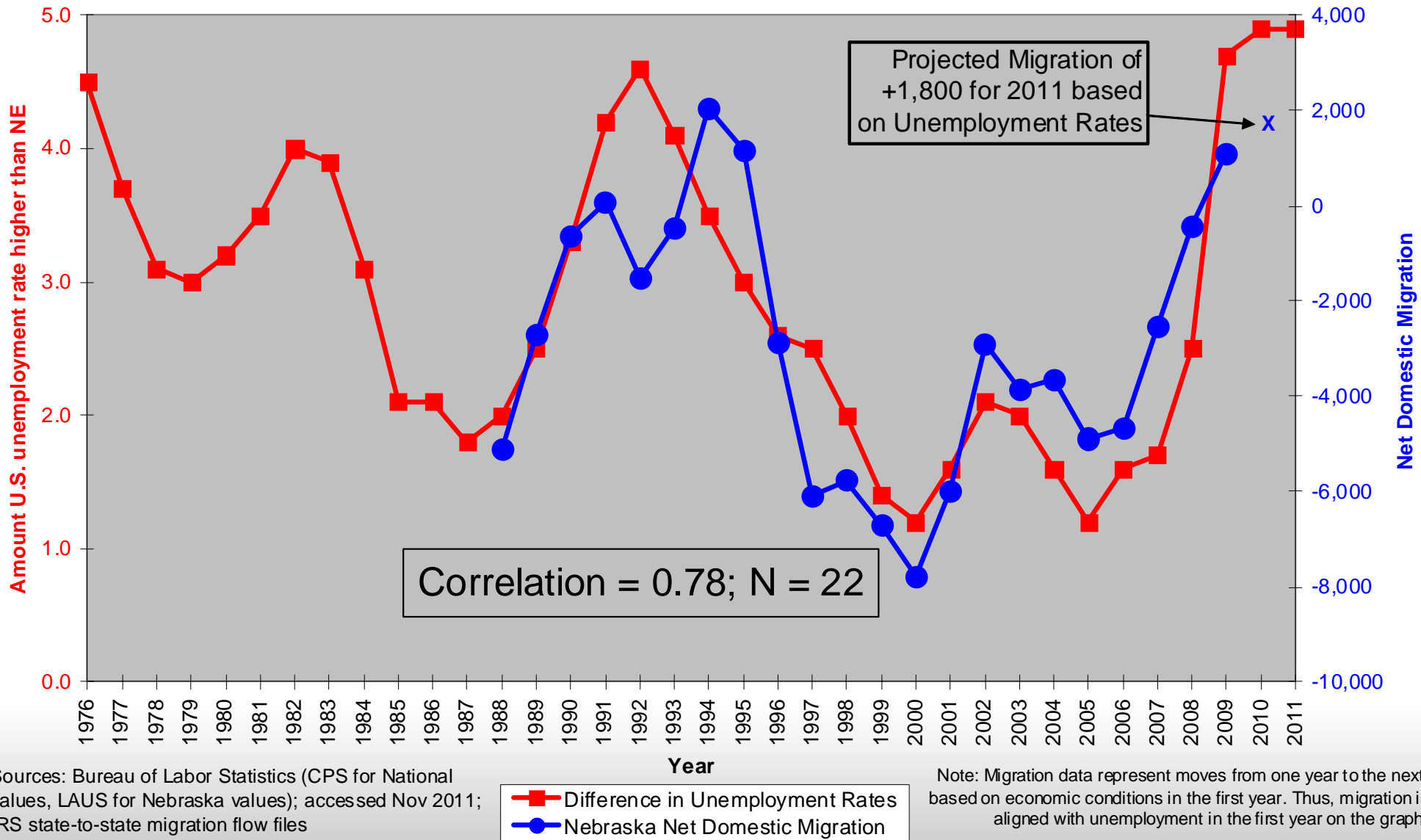
Source: IRS State-to-State Migration Files

■ Total Domestic Inflow
 ◆ Total Domestic Outflow
 ▲ Total Net Domestic

Compiled and Prepared by: David Drozd, CPAR @ UNO 12-5-11

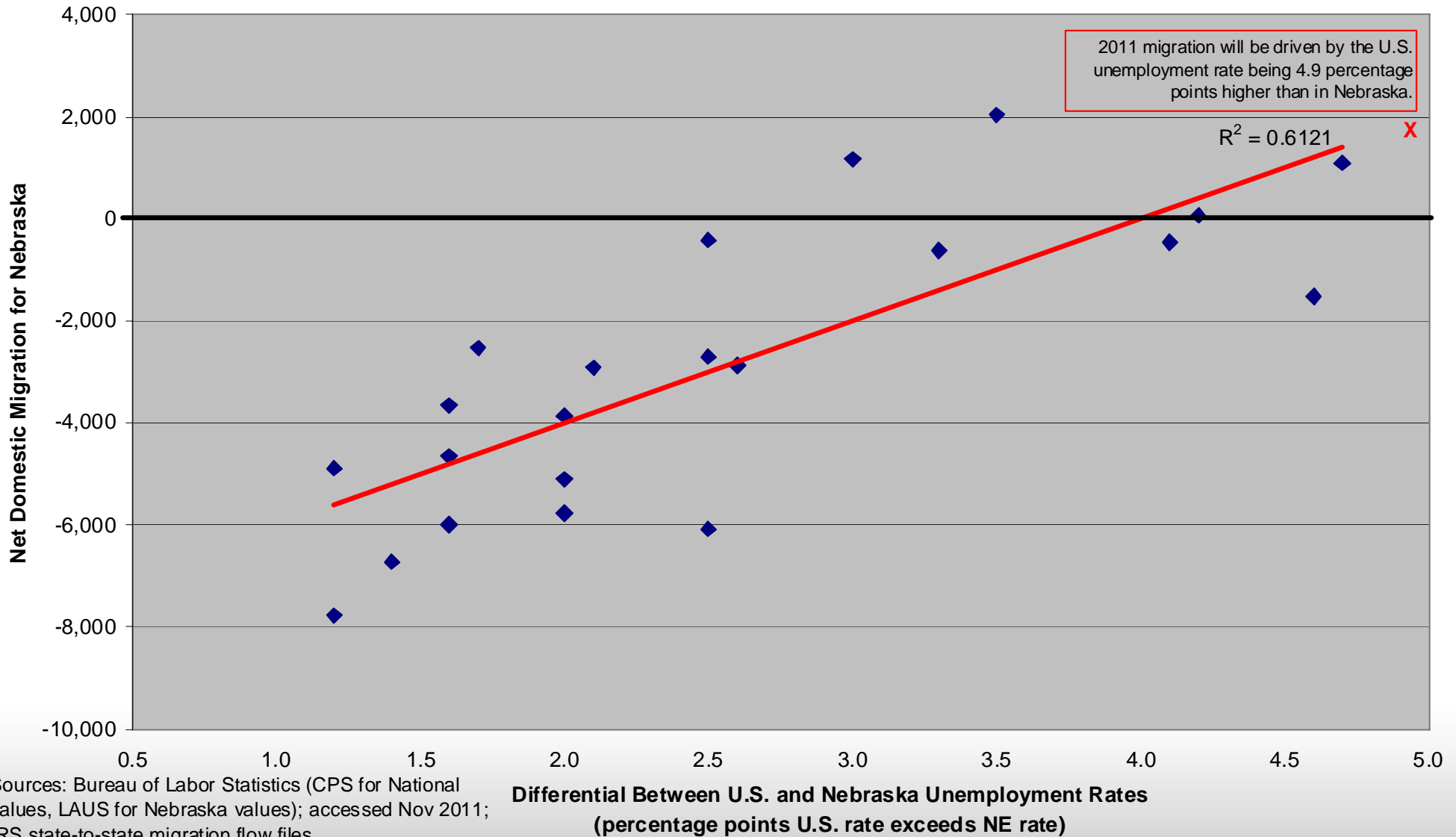
Our Net Migration will remain strong as long as our Unemployment Rate remains well below that of the U.S.

Difference Between U.S. and Nebraska Unemployment Rates: 1976-2011 (Percentage points U.S. rate exceeds Nebraska rate) and Nebraska Net Domestic Migration: 1989-2010



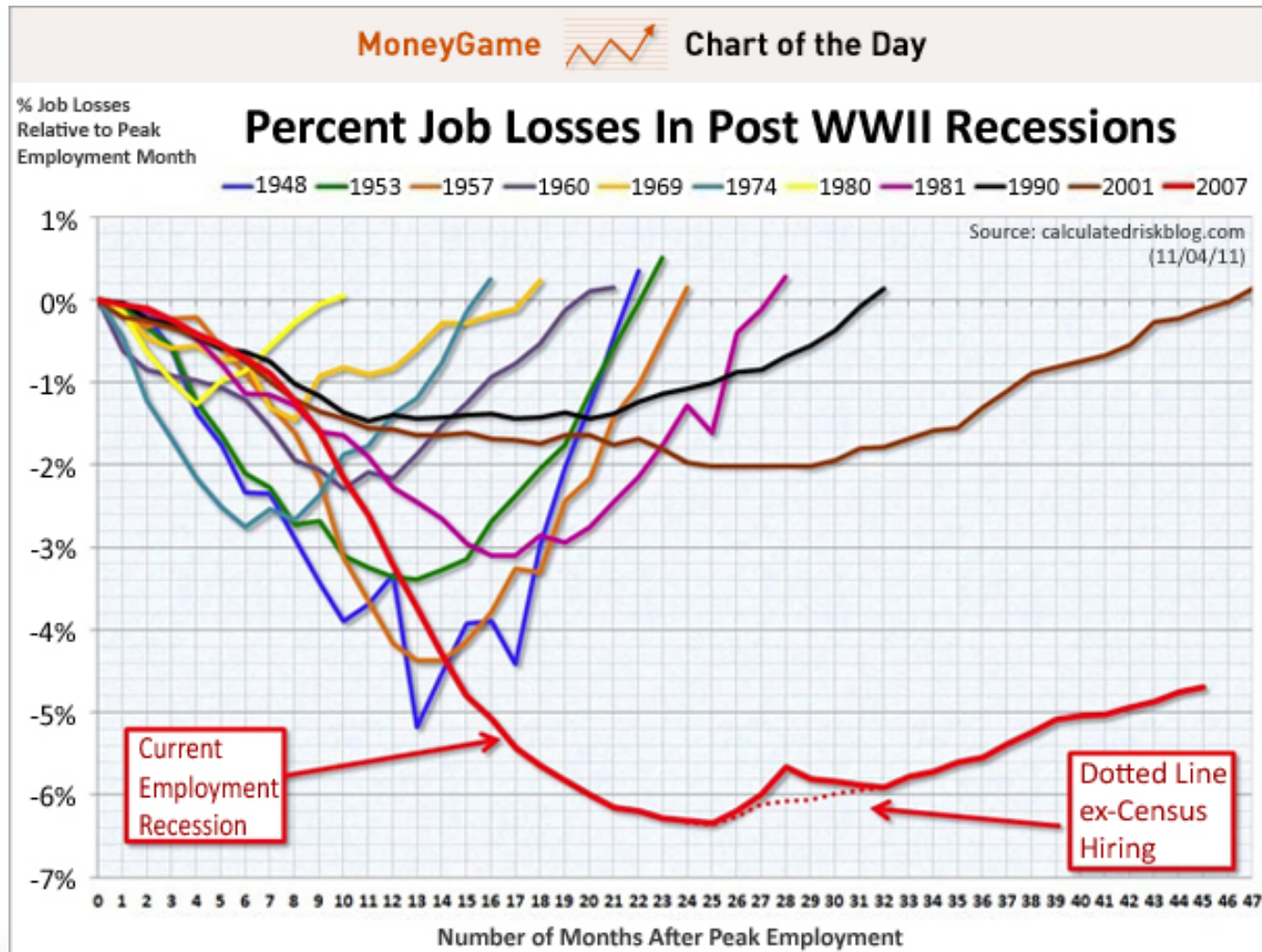
We are in uncharted waters!! (the unemployment gap between Nebraska and the U.S. has never been this big)

Comparison of the Relationship between Net Domestic Migration for Nebraska and the Differential Between the U.S. and Nebraska Unemployment Rates

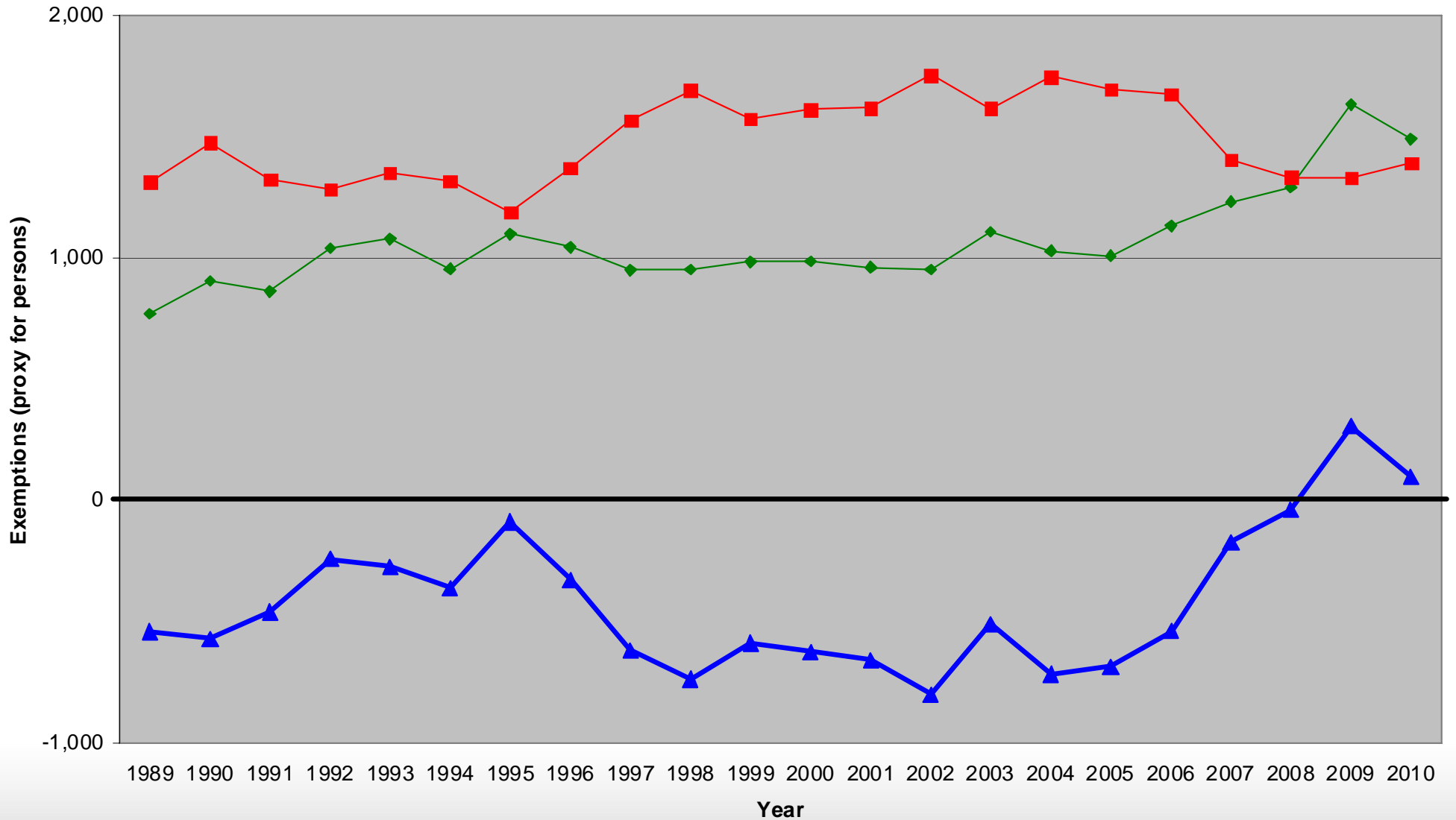


Sources: Bureau of Labor Statistics (CPS for National values, LAUS for Nebraska values); accessed Nov 2011; IRS state-to-state migration flow files

This is Not your Ordinary Recession/Recovery!!



Number of Tax Return Exemptions for Movers between Nebraska and Florida: 1989 to 2010



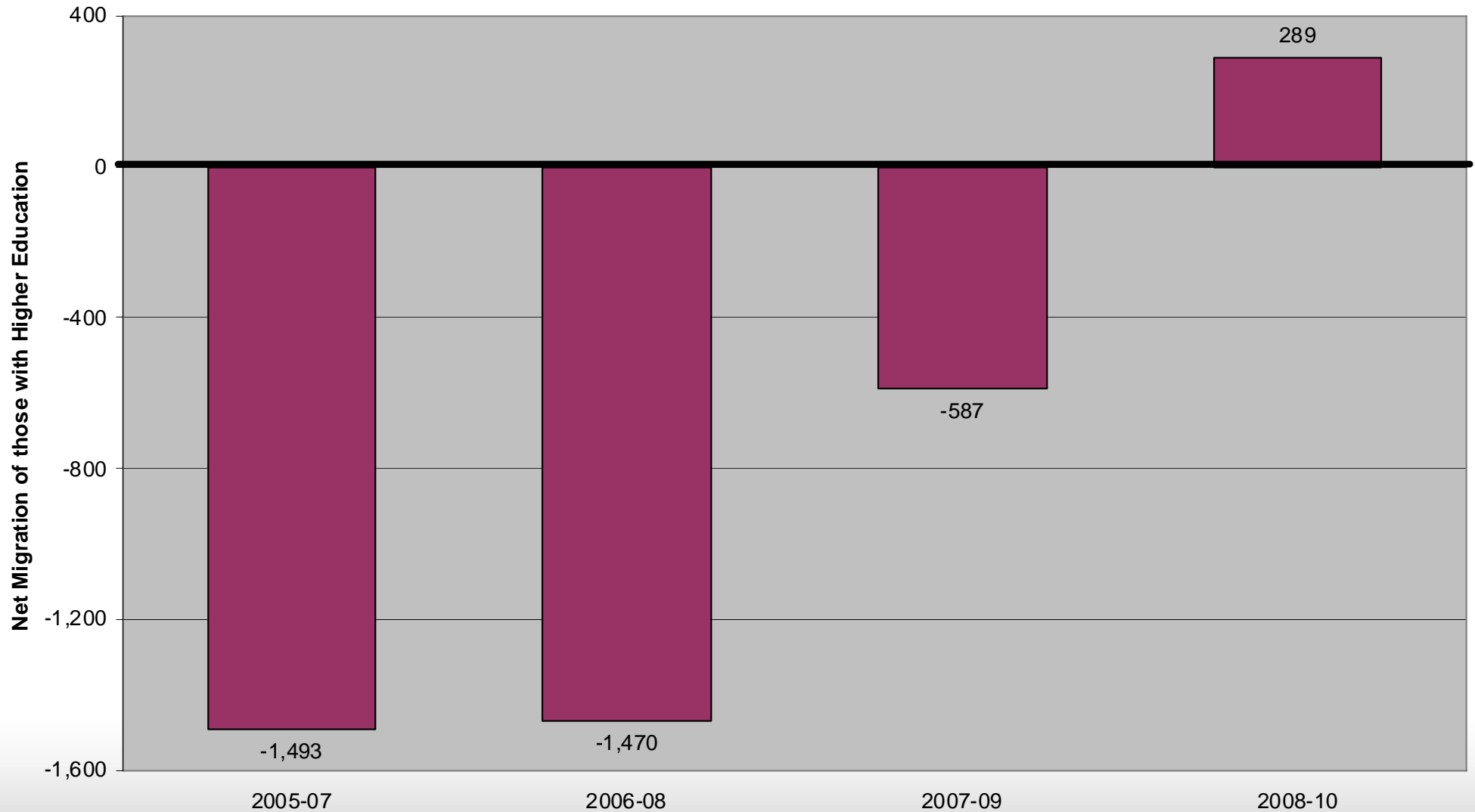
Source: IRS State-to-State Migration Files

◆ Total Inflow ■ Total Outflow ▲ Total Net Flow

Compiled and Prepared by: David Drozd, CPAR @ UNO 12-5-11

Improved migration includes first "Brain Gain"

**Nebraska Net Migration of Those Age 25 or Older with Bachelor's Degrees or More Education
(Moving three-year timeframes: 2005-2007 to 2008-2010)**



Sources: 2005-2010 Annual American Community Surveys: 3-year aggregates, U.S. Census Bureau, Calculations by CPAR at UNO

Timeframe

Note: A positive value is referred to as net immigration, which is typically desired.

Percentage of the Population Aged 25+ with a Bachelor's Degree or More Education

<u>Year</u>	<u>U.S.</u>	<u>NE</u>	<u>Gap</u>	<u>NE State Rank</u>
1970	10.7	9.6	- 1.1	Unknown
1980	16.2	15.5	- 0.7	Unknown
1990	20.3	18.9	- 1.4	27
2000	24.4	23.7	- 0.7	24
2010	28.2	28.6	+0.4	21

Sources: Decennial Censuses and 2010 ACS, U.S. Census Bureau

Ranking of State Real Income Growth: 2009-2010

<u>Rank & State</u>	<u>% Change in Median HH Income</u>	
1. Nebraska	+ 0.7	
2. West Virginia	+ 0.5	
3. South Dakota	+ 0.5	
4. North Dakota	+ 0.4	
<u>5. Virginia</u>	<u>+ 0.3</u>	(only states rising)
9. Kansas	- 0.9	
16. Iowa	- 1.8	
36. Missouri	- 3.8	
47. Arizona	- 5.8	
50. Nevada	- 6.1	

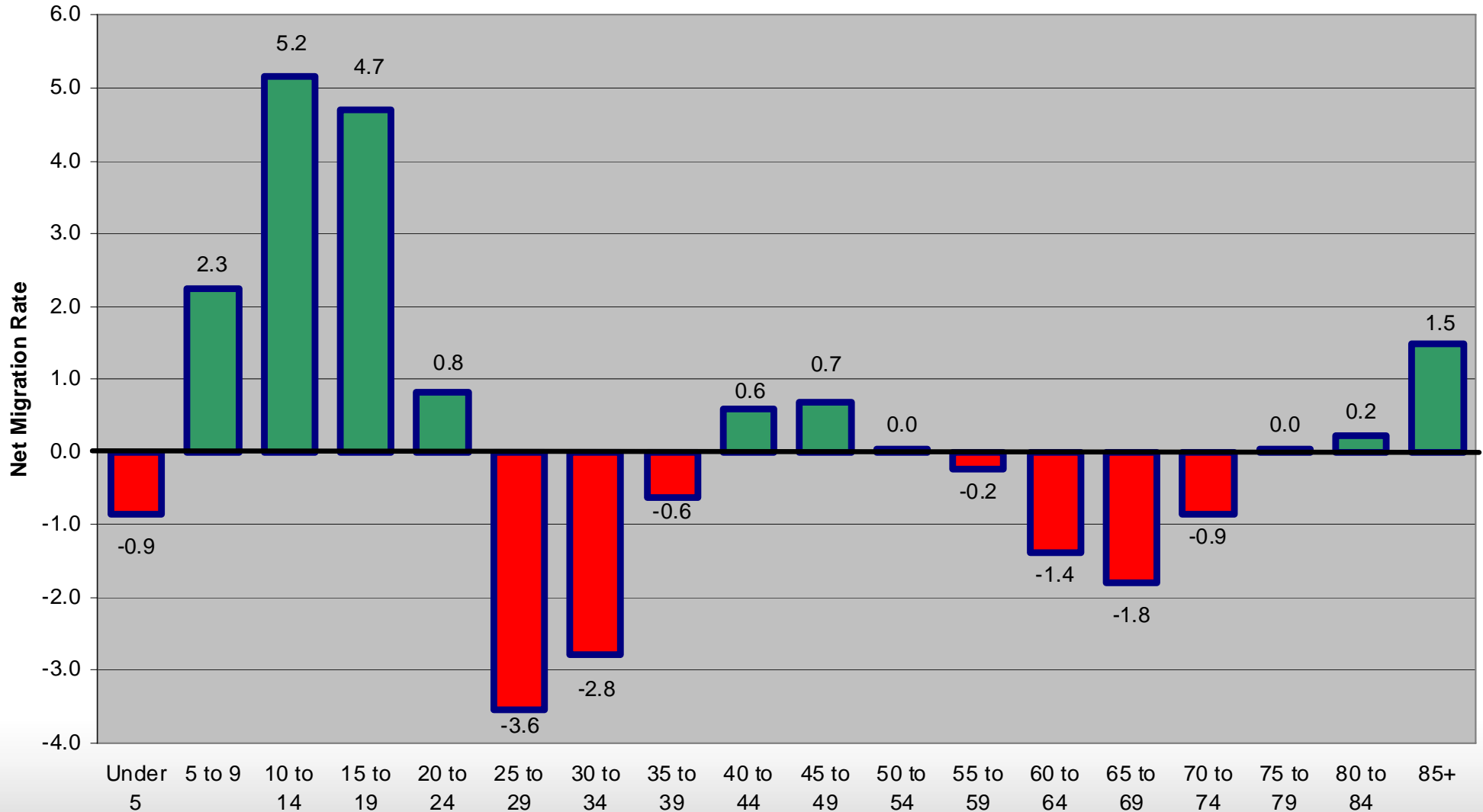
Percentage of Persons in the Labor Force

<u>Area</u>	<u>Age 55-64</u>	<u>Area</u>	<u>Age 65+</u>
1. Nebraska	74.4	1. Alaska	23.9
2. North Dakota	73.2	2. Wash, DC	21.8
3. Iowa	73.1	3. Vermont	20.6
4. New Hampshire	72.9	4. Nebraska	20.5
5. South Dakota	72.9	5. Maryland	19.9
10. Kansas	71.3	14. Kansas	18.4
		19. Iowa	17.2

Source: 2008-2010 American Community Survey, U.S. Census Bureau

Nebraska Net Migration Rate by Age during 2000 to 2010 timeframe

Overall Net Migration Rate = 0.3



Sources: 2000 and 2010 Censuses, U.S. Census Bureau, Annual Births and Deaths by Single Year of Age, NE Dept of HHS

Age Group

Compiled and Prepared by: David Drozd, UNO Center for Public Affairs Research

<u>Households with...</u>	<u>Percent</u>	<u>Rank</u>
Earnings	82.7	9
Interest/Dividends	28.2	16
Social Security or Railroad Retirement	26.7	35
Retirement income*	13.3	50

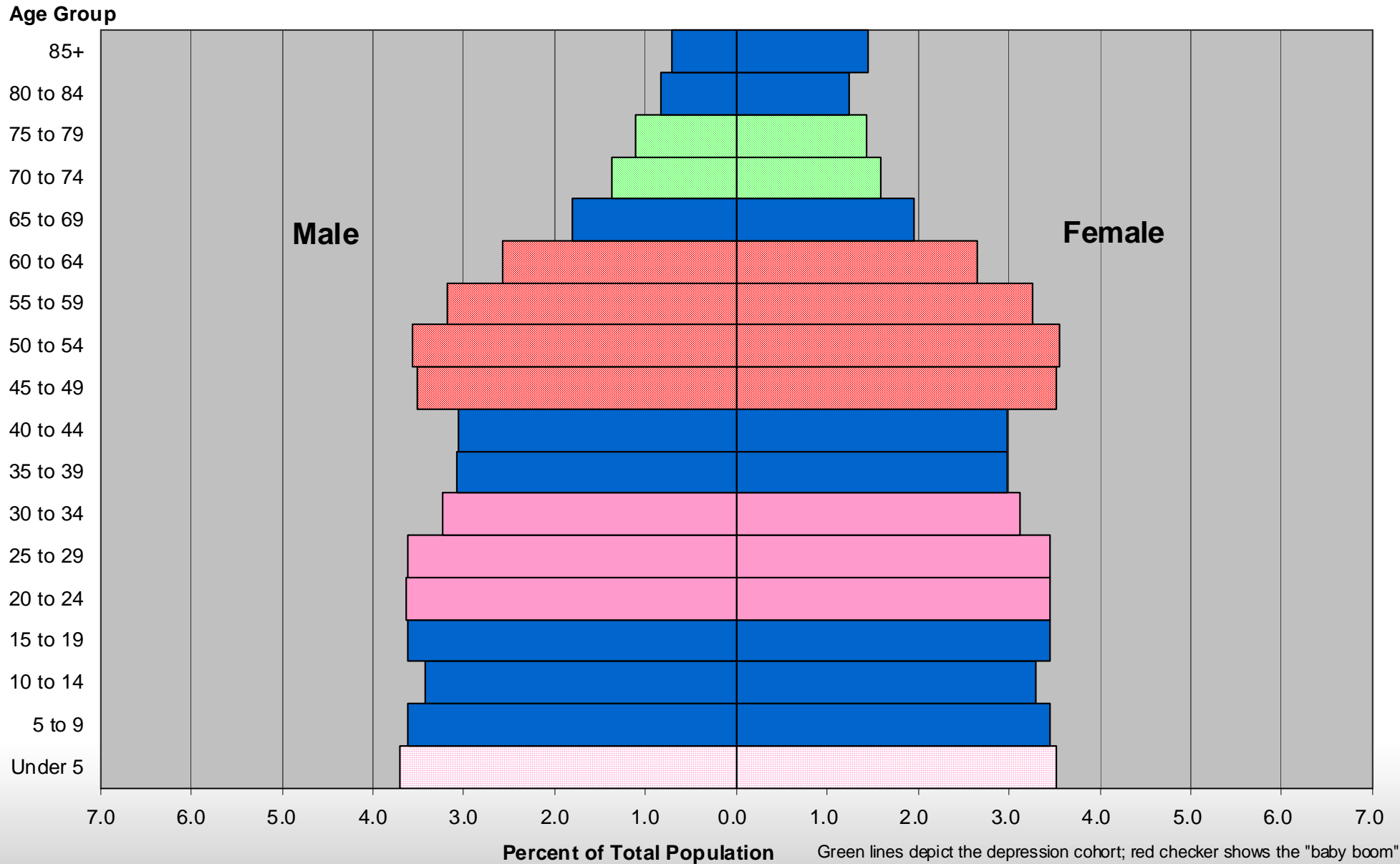
Conclusion: Nebraskans generally are here to work, not retire.

* “Retirement, survivor or disability benefits (pensions) from companies/unions, fed/state/local government, and the military.”

Source: 2005-2009 ACS, U.S. Census Bureau (9 million U.S. interviews)

Sex and Age "Pyramid" Largely Determined by Births

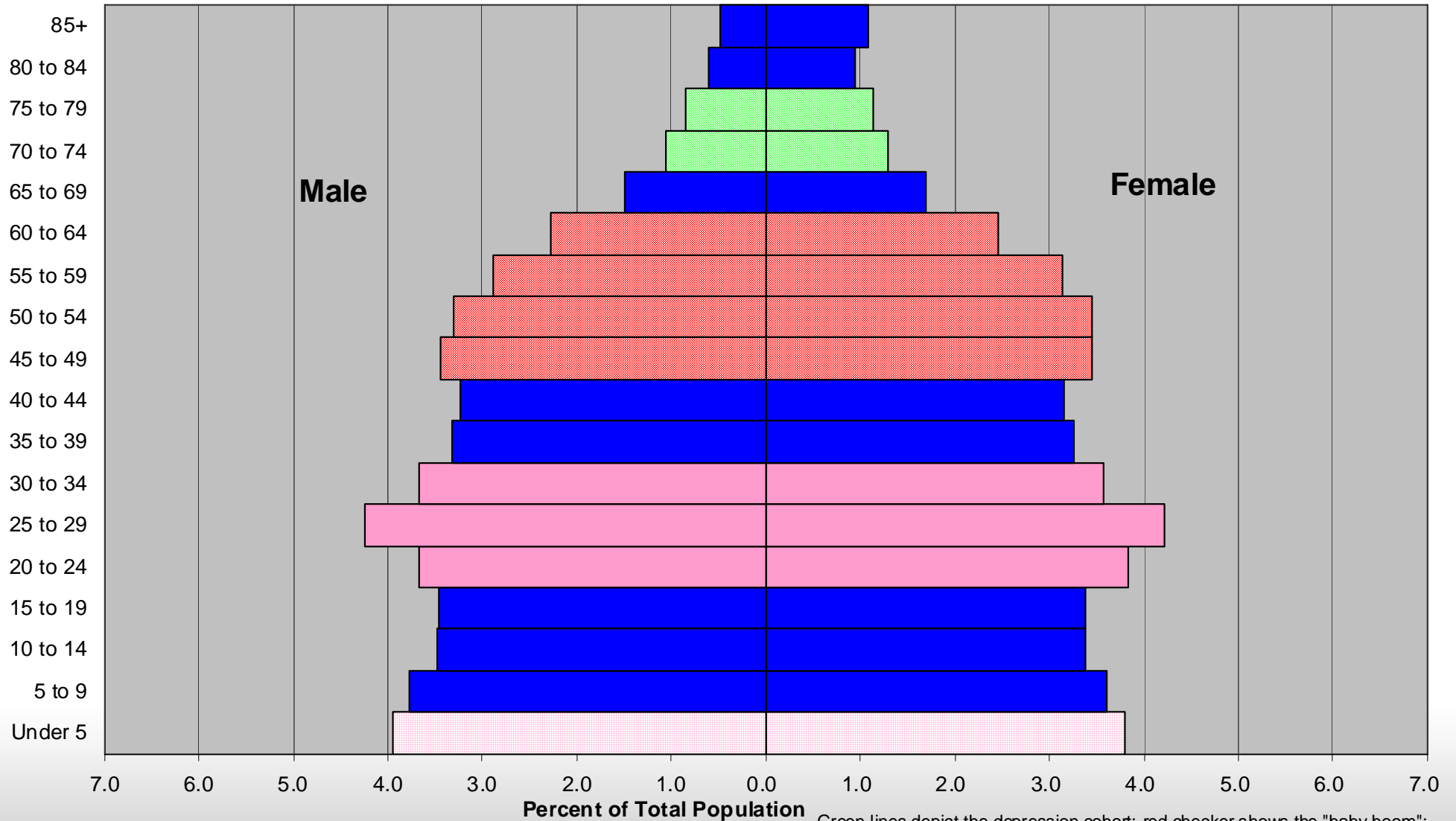
2010 Nebraska Population by Sex and Five-Year Age Group



Source: 2010 Census, U.S. Census Bureau

Green lines depict the depression cohort; red checker shows the "baby boom"; pink represents the "baby boom echo"; pink crosshatch shows the "3rd wave"

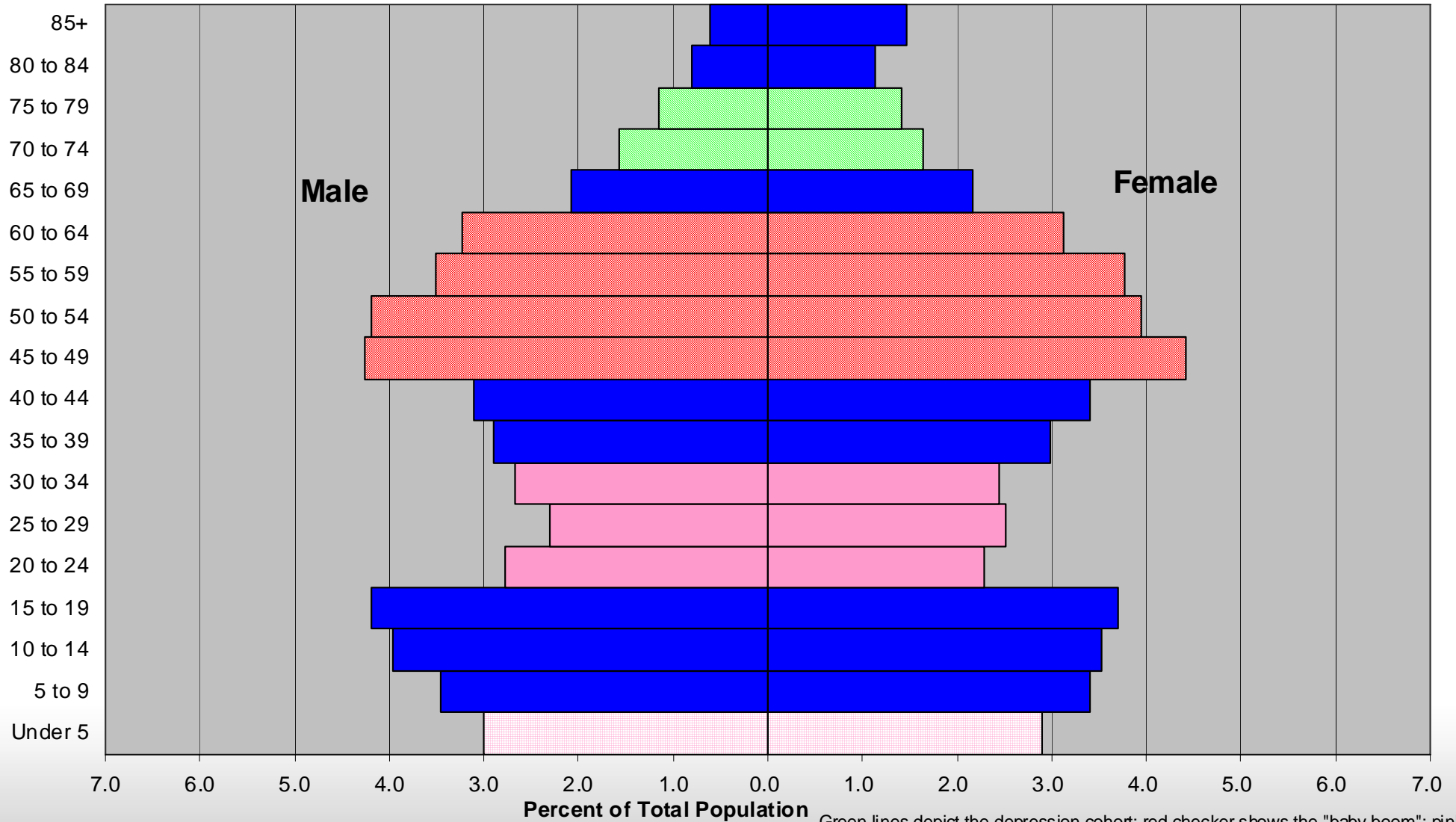
2010 Douglas County Population by Sex and Five-Year Age Group: Total Population



Source: 2010 Census (DP-1), U.S. Census Bureau

Green lines depict the depression cohort; red checker shows the "baby boom"; pink represents the "baby boom echo"; pink crosshatch shows the "3rd wave"

2010 Washington County Population by Sex and Five-Year Age Group: Total Population

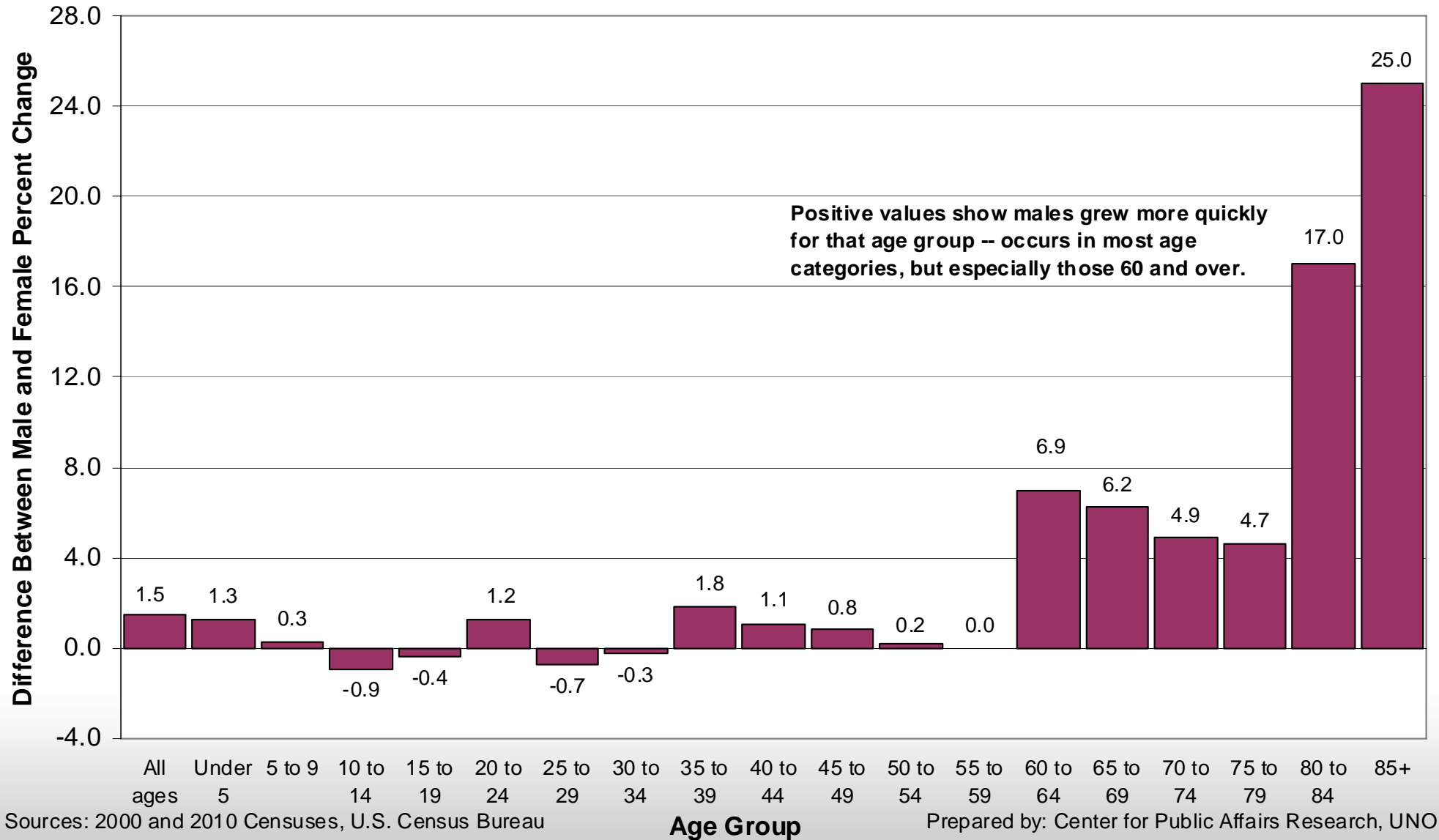


Source: 2010 Census (DP-1), U.S. Census Bureau

Green lines depict the depression cohort; red checker shows the "baby boom"; pink represents the "baby boom echo"; pink crosshatch shows the "3rd wave"

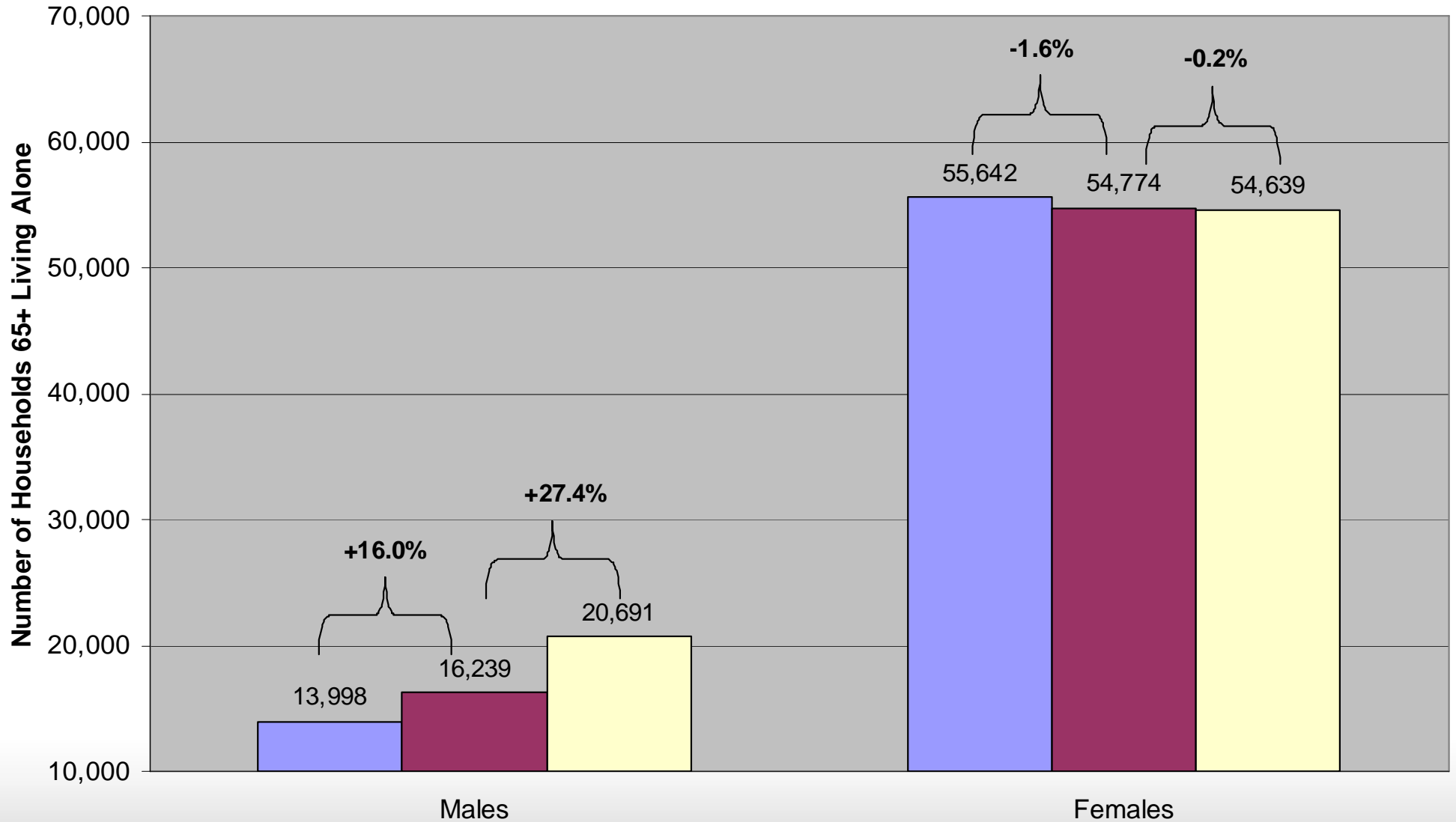
Older Men are Growing at a Faster Rate than Older Women

Differential in Percentage Changes of 5-Year Age Groups for Men vs. Women in Nebraska: 2000 to 2010



Males Age 65+ Living Alone Increasing; Females down slightly

Number of Nebraskans Aged 65 and Older Living Alone by Gender: 1990 to 2010

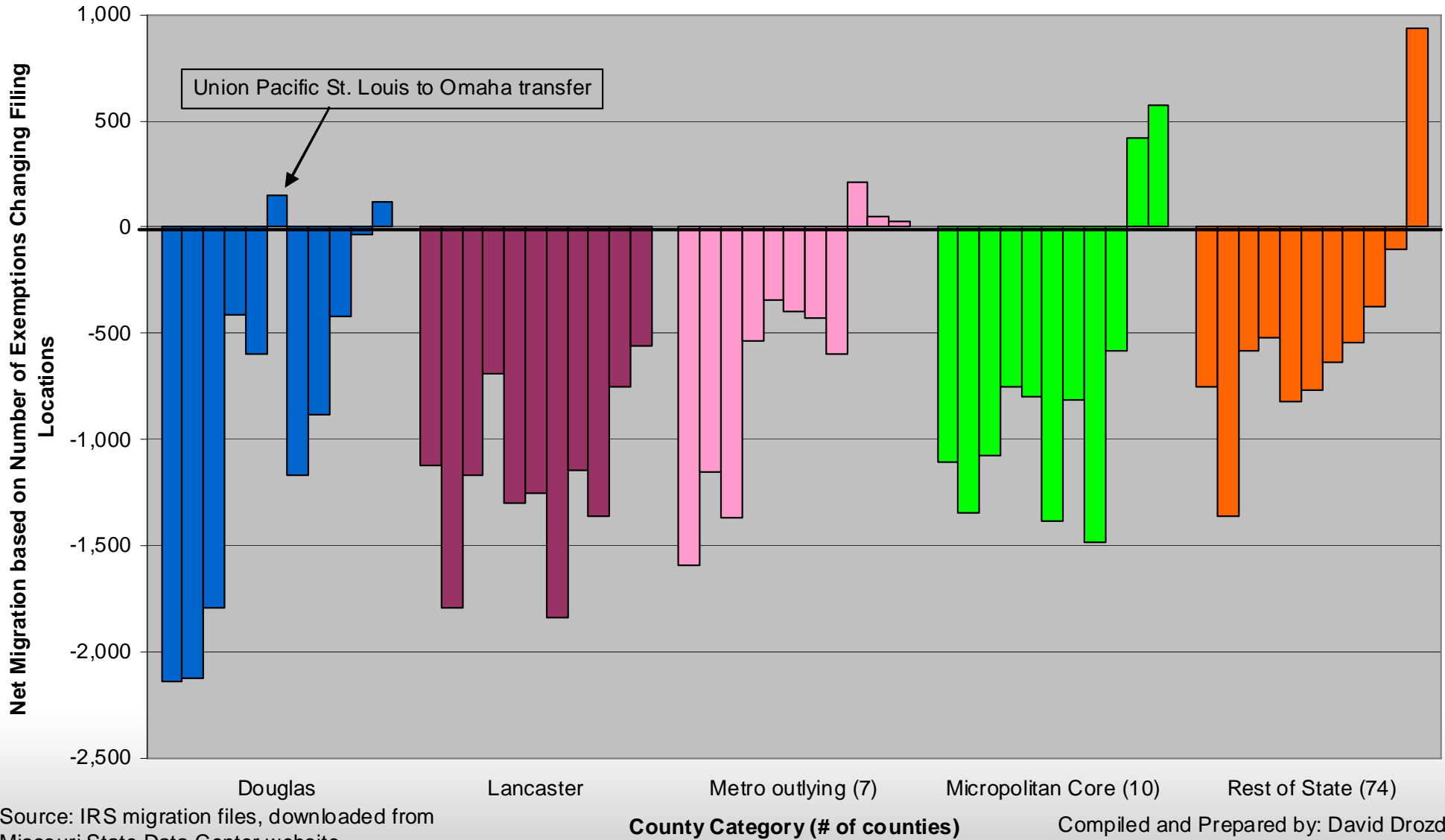


Sources: Decennial Censuses,
U.S. Census Bureau

■ 1990 ■ 2000 ■ 2010

Compiled and Prepared by: David Drozd,
UNO Center for Public Affairs Research

Nebraska State-to-State Net Migration by County Type Based on the Last 10 Years of IRS Tax Filing Data (1999-00 to 2009-10)

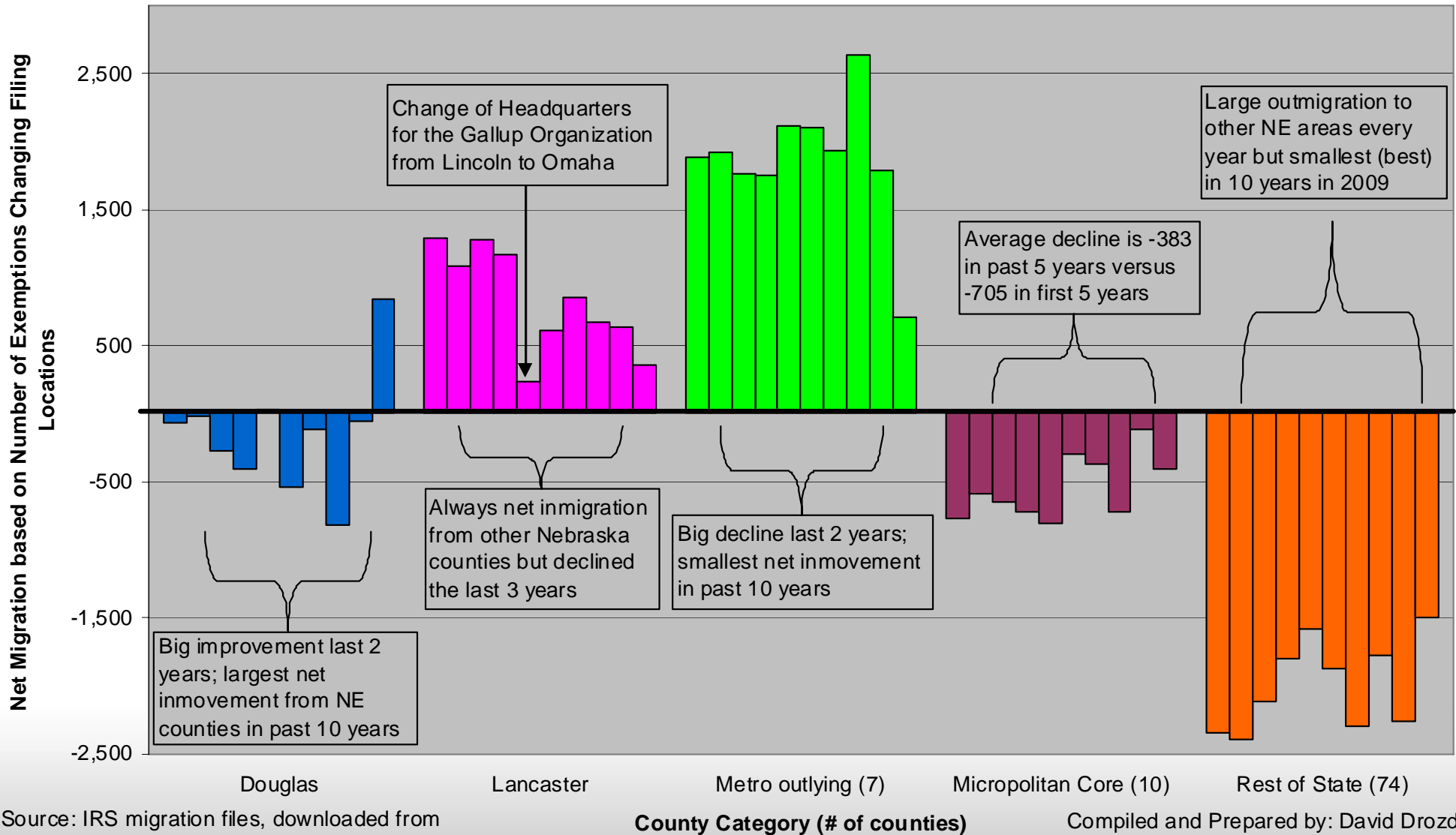


Source: IRS migration files, downloaded from Missouri State Data Center website

Compiled and Prepared by: David Drozd, Center for Public Affairs Research, UNO

Among intrastate moves, Douglas County was much higher in 2009 than prior years (improved with nearby metro outlying counties)

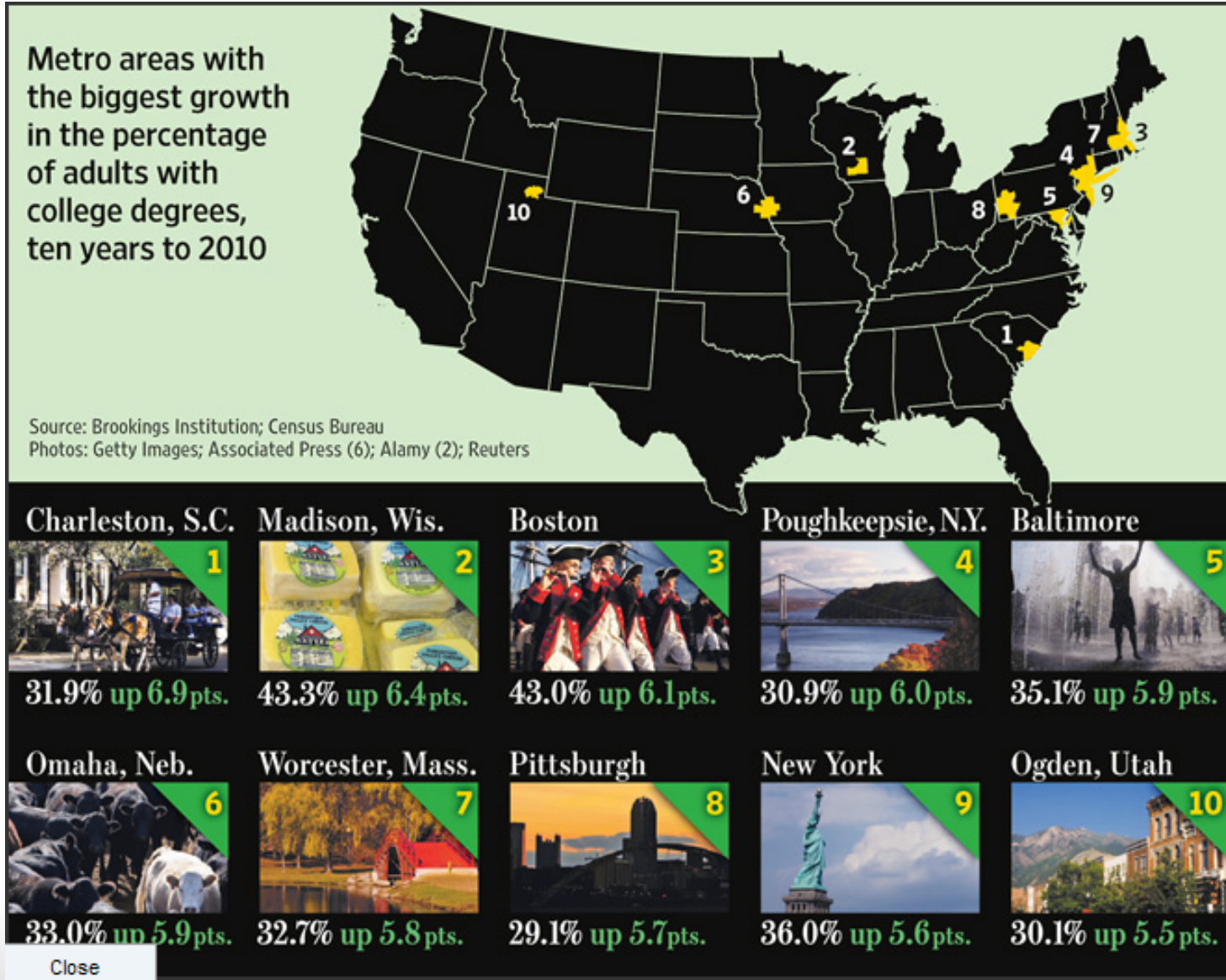
Net Migration within Nebraska by County Type Based on the Last 10 Years of IRS Tax Filing Data (2000 to 2009)



Source: IRS migration files, downloaded from Missouri State Data Center website

Compiled and Prepared by: David Drozd, Center for Public Affairs Research, UNO

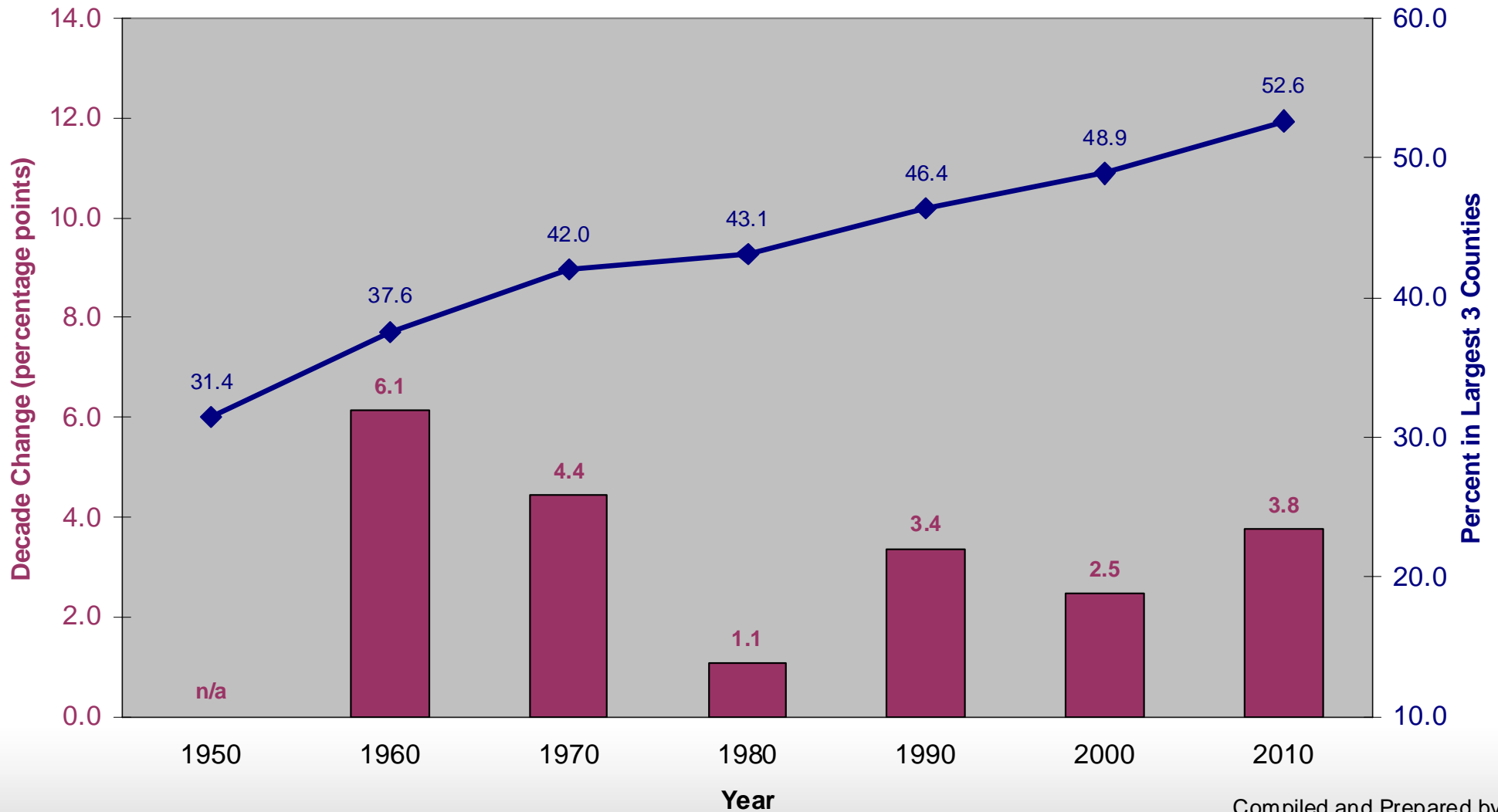
The Omaha metro had the 6th largest percentage point gain in Higher Education from 2000 to 2010



Taken from Wall Street Journal

"Big 3" counties control an increasing share of NE's population

Percentage of the Nebraska Population located in its Largest 3 Counties of Douglas, Lancaster, and Sarpy: 1950 to 2010 including Change during the Decade



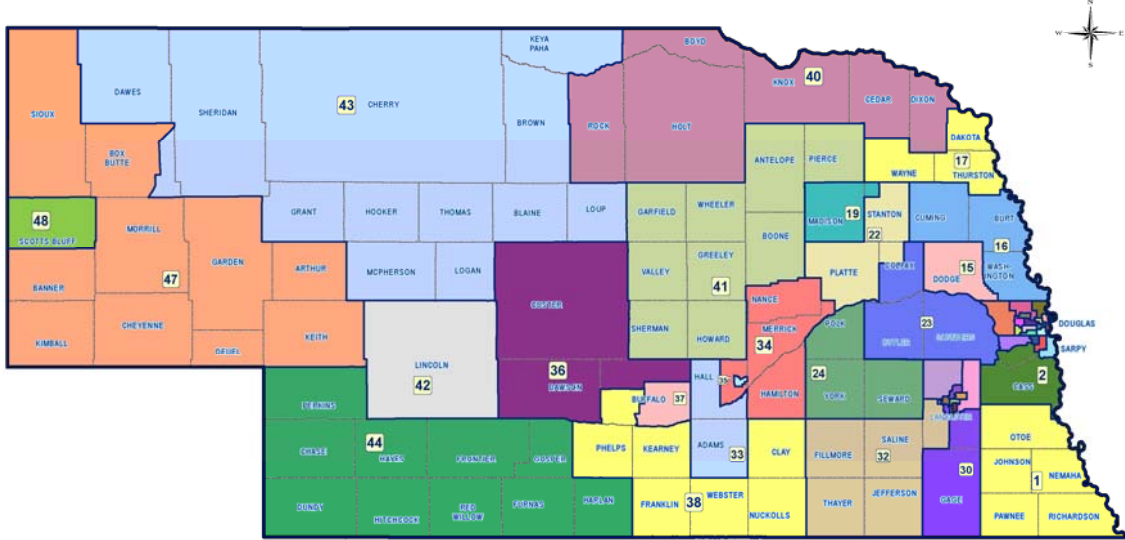
Source: Decennial Censuses, U.S. Census Bureau

Change — Percent of Population in "Big 3" Counties

Compiled and Prepared by: David Drozd, UNO Center for Public Affairs Research

LEGISLATIVE DISTRICTS - LB 703 (2011)

LEG11-43002E



2013 Unicameral Districts

Douglas 14 full
 Lancaster 7 full & 2 partial
 Sarpy 4 full & 1 partial

Big 3 total 25 full & 3 partial

Rest of state 21 full & 3 partial

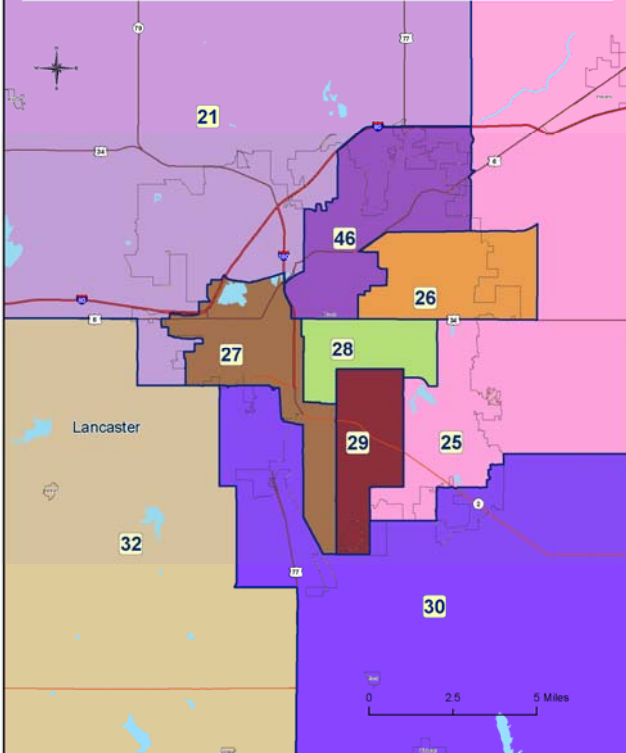
Post 2000 Districts

Douglas: 11 full + 4 partial

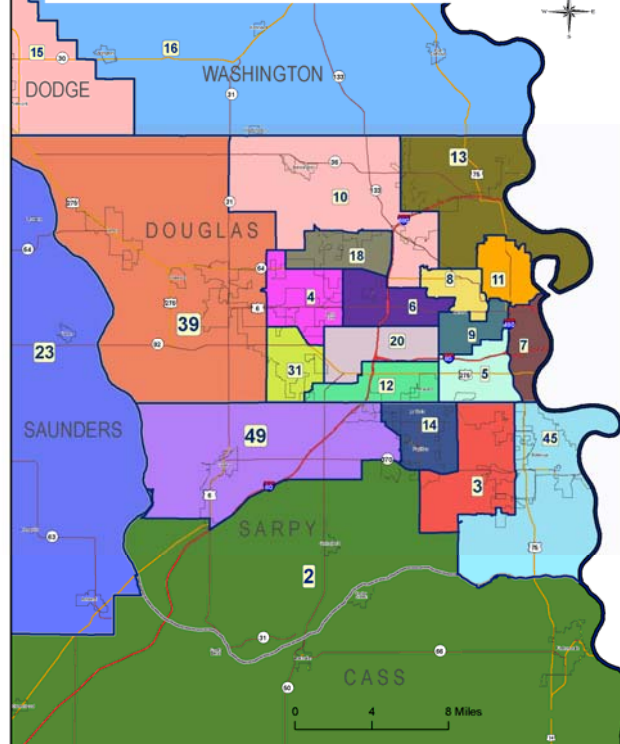
Lancaster: 6 full + 2 partial

Sarpy: 3 full + 4 partial

Nebraska Legislative Districts - LB 703 (2011)
 LEG11-43002E Lincoln Area

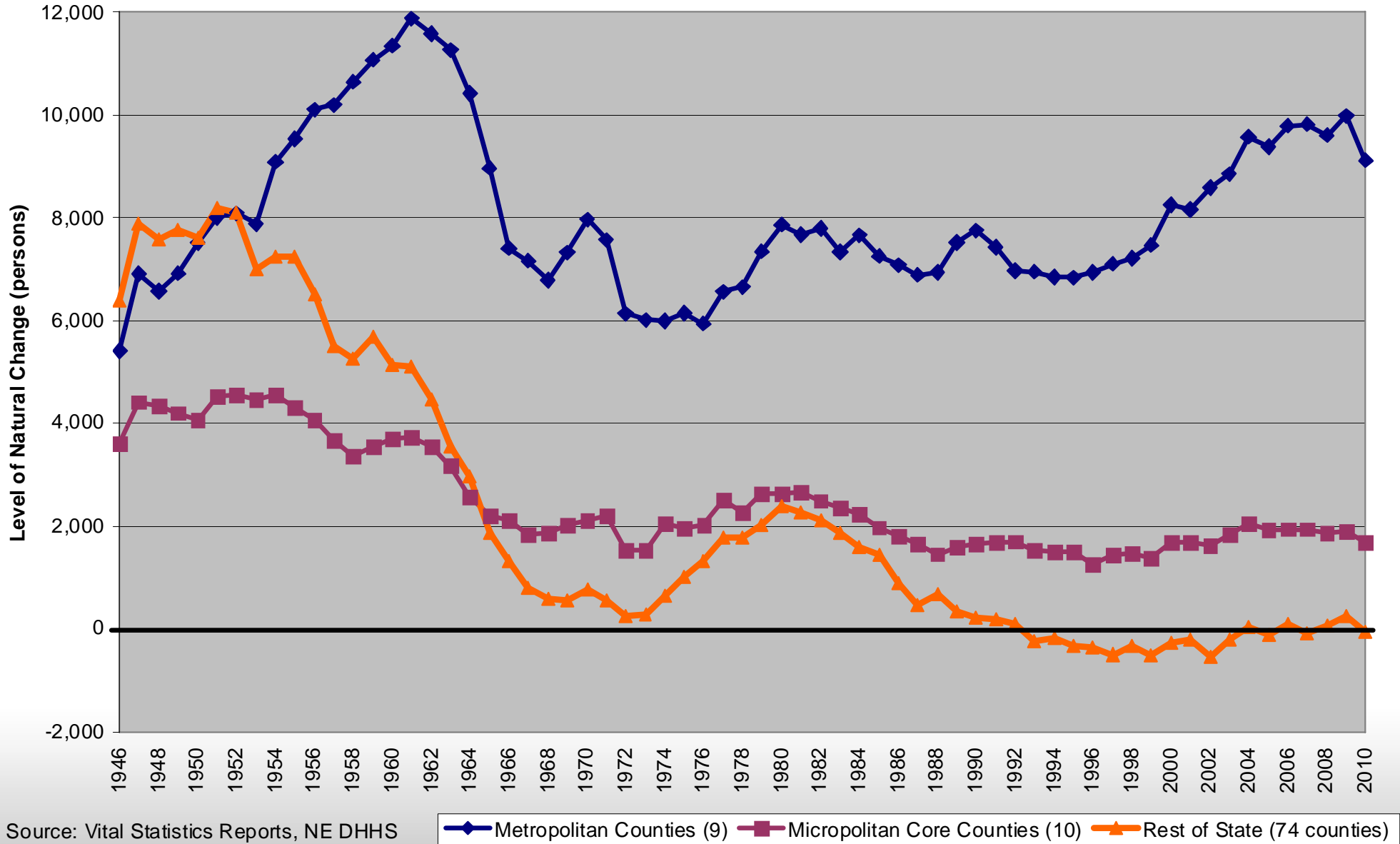


Nebraska Legislative Districts - LB 703 (2011)
 LEG11-43002E Omaha Area



Metro areas will continue to gain population share

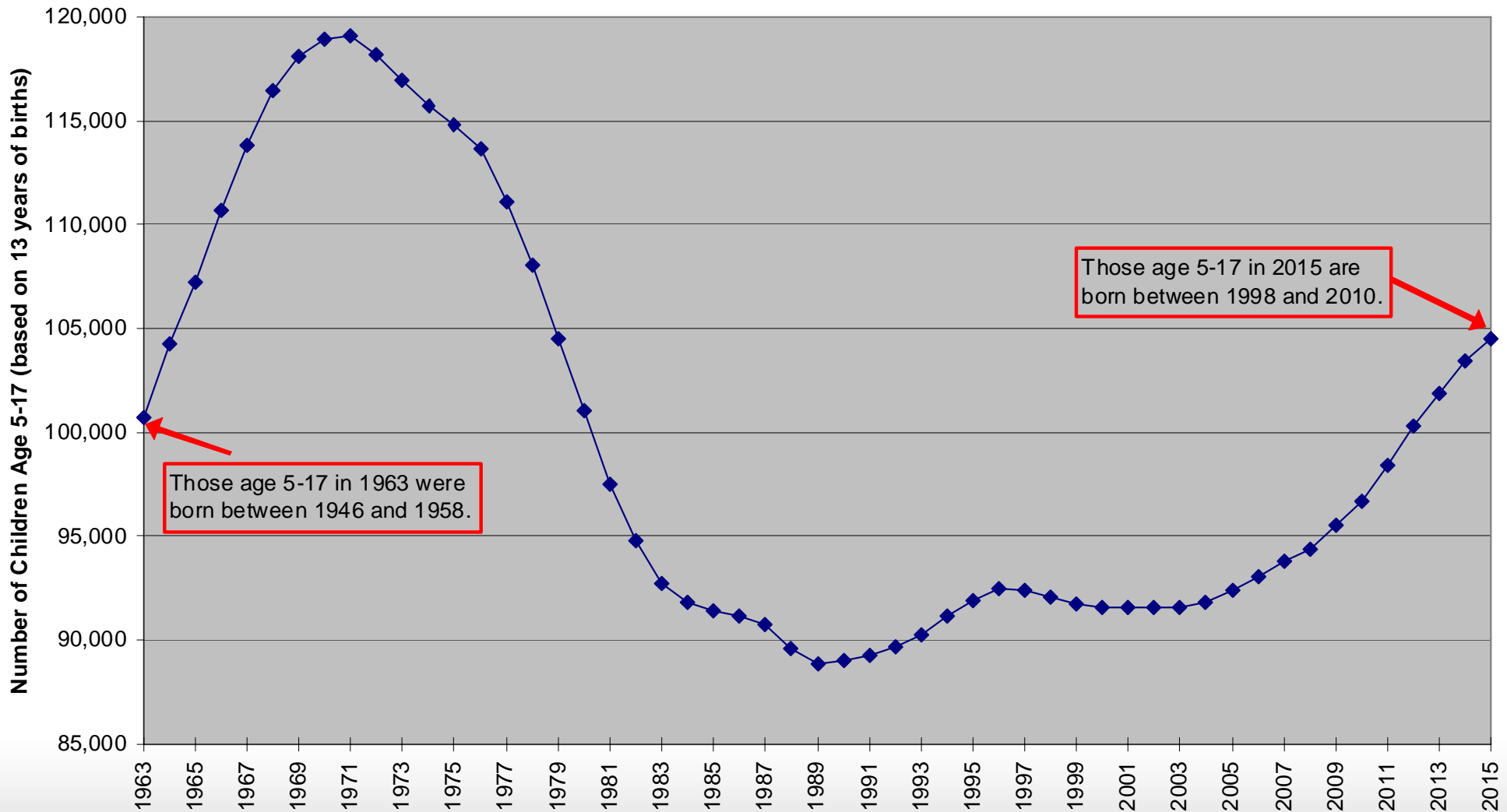
Annual Natural Change (Births - Deaths) for Nebraska by County Type: 1946 to 2010



Source: Vital Statistics Reports, NE DHHS

Births are on the rise, affecting school enrollment

School Age (K-12) Population based on 13-Year Periods of Births to Douglas County Residents (Based on Births between 1946 and 2010)

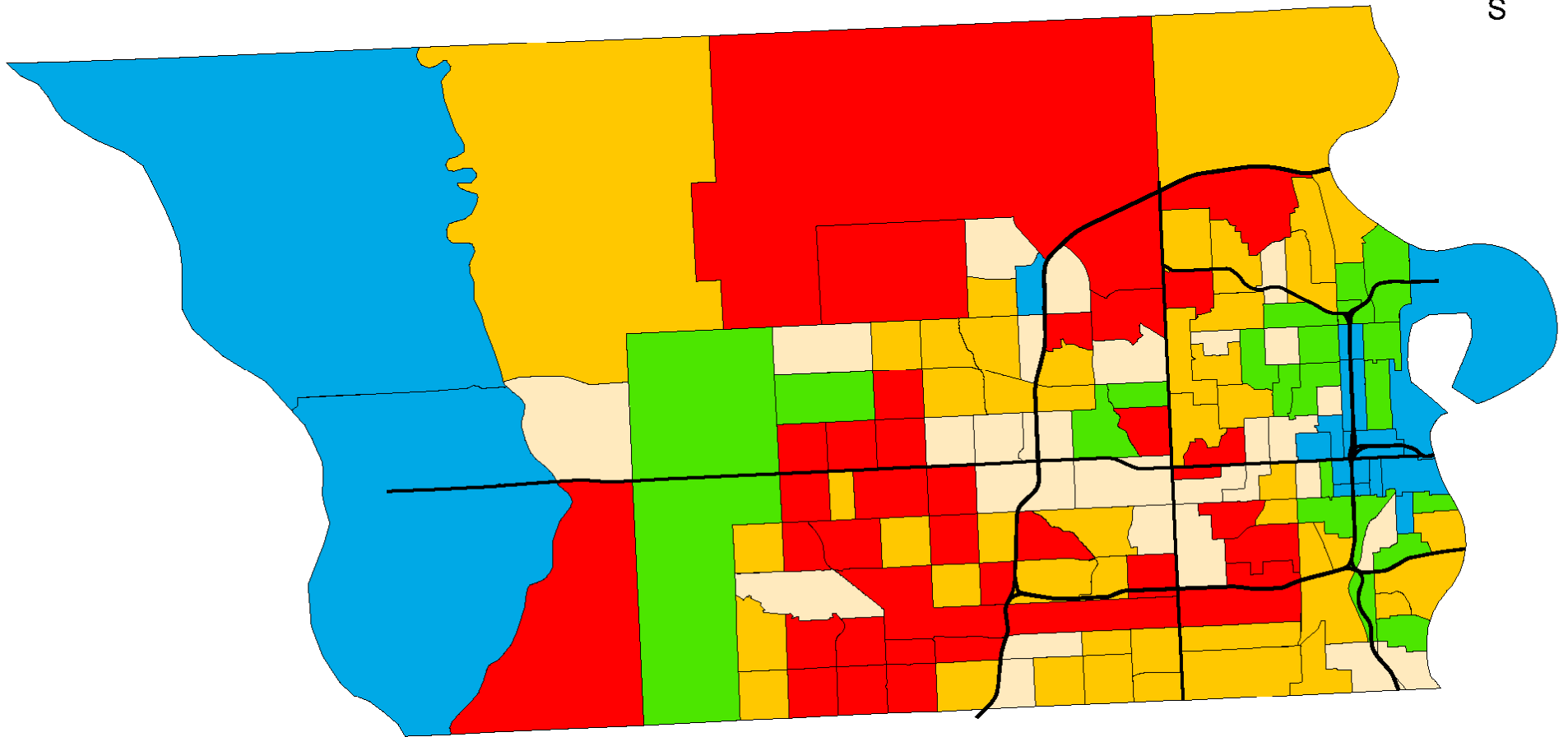


Source: Vital Statistics, NE Dept of Health and Human Services; Compiled by CPAR @ UNO

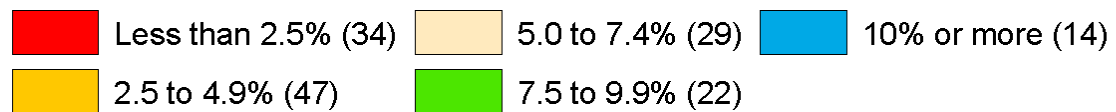
School Age Population in Specific Year
(based on 13-year period of births starting 5 years prior)

Note: this is based on births alone, migration factors are excluded.

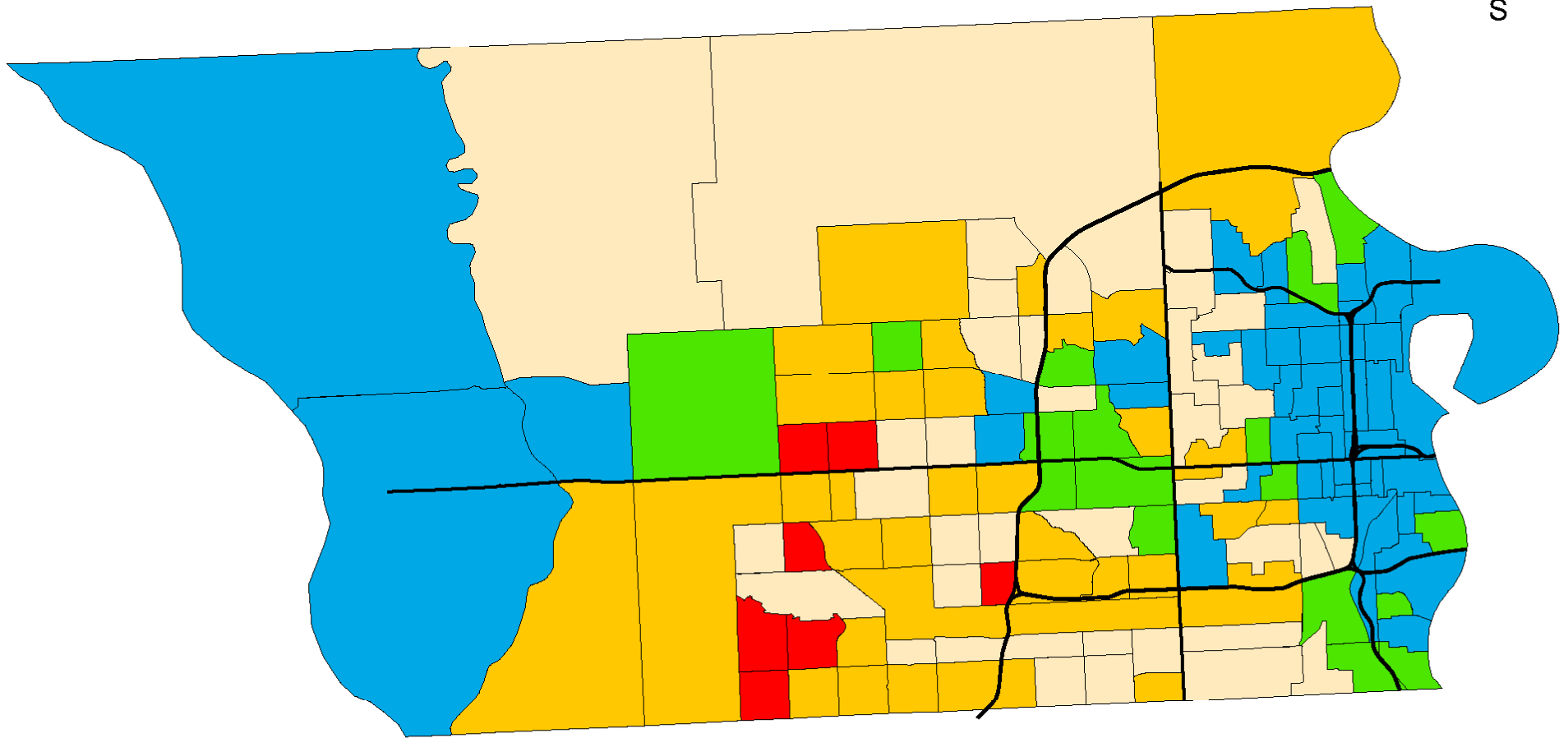
Percentage of Housing Units that were Vacant: 2000



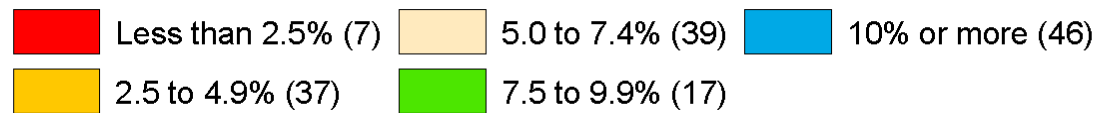
2000 Vacancy Rate (Countywide = 5.4%)



Percentage of Housing Units that were Vacant: 2010



2010 Vacancy Rate (Countywide = 7.8%)



Sources: Census 2010 Redistricting File, U.S. Census Bureau; 2000-based Douglas County Census Tracts

Prepared by: David Drozd, Center for Public Affairs Research, University of Nebraska at Omaha: March 2011

- The Census Bureau started applying weighting controls to ACS sub-county (place) estimates in 2009
 - Big effect on Omaha city’s numbers as ACS had previously been “too low” on total pop., then was way “too high” in 2009 and 2010 is based on census count
 - 2000 Cen: 390,007; 2008 ACS: 388,874; 2009: 454,714
 - 2010 Cen: 408,958; 2010 ACS: 410,269; 08-10: 408,179
- Bottomline: rely on 2010 & post 2010 ACS estimates & realize 2009 represents a “break in series” from prior Omaha ACS data; Douglas Co. figures are better but still impacted by the change; use 2010 Census when possible (age, race, tenure, etc.)
 - You may see strange changes when looking at ACS items by race; it’s a different distribution (weighting) of the population and therefore items like poverty may change somewhat wildly