

RUNNING HEAD: SNYDER AND TKACH— NEW DIGENEANS FROM *EMYDURA*
VICTORIAE

***Paradeuterobaris victoriae* n. sp. (Digenea: Microscaphidiidae) and *Buckarootrema minuta*
n. sp. (Digenea: Pronocephalidae) from the Victoria River Red-faced Turtle, *Emydura*
victoriae (Pleurodira: Chelidae) in Australia**

SCOTT D. SNYDER^{1,3} and VASYL V. TKACH²

¹Department of Biology, University of Nebraska at Omaha, Omaha, NE 68182, U.S.A. (email:
sdsnyder@mail.unomaha.edu)

²Department of Biology, University of North Dakota, Grand Forks, ND 58202, U.S.A. (email:
vasyl.tkach@und.nodak.edu)

³Corresponding author

ABSTRACT: *Paradeuterobaris victoriae* n. sp. (Digenea: Microscaphidiidae) and *Buckarootrema minuta* n. sp. (Digenea: Pronocephalidae) are described from the Victoria River red-faced turtle, *Emydura victoriae* (Pleurodira: Chelidae) from the Victoria River, Northern Territory, Australia. Each of the new species is the second known member of a previously monotypic genus. *Paradeuterobaris victoriae* n. sp. differs from *Paradeuterbaris novaguineae* in the extent of the vitellaria and ventral glands, the position of the testes and the presence of numerous uterine loops between the anterior testis and seminal vesicle, among other characters. *Buckarootrema minuta* n. sp. differs from *Buckarootrema goodmani* in the relative length of the ceca, the relative position of the gonads and testes, the position of uterine loops, the number of eggs, and overall body size. This work is the first report of any parasite from the Victoria River red-faced turtle and the first report of endohelminths from turtles of Northern Territory.

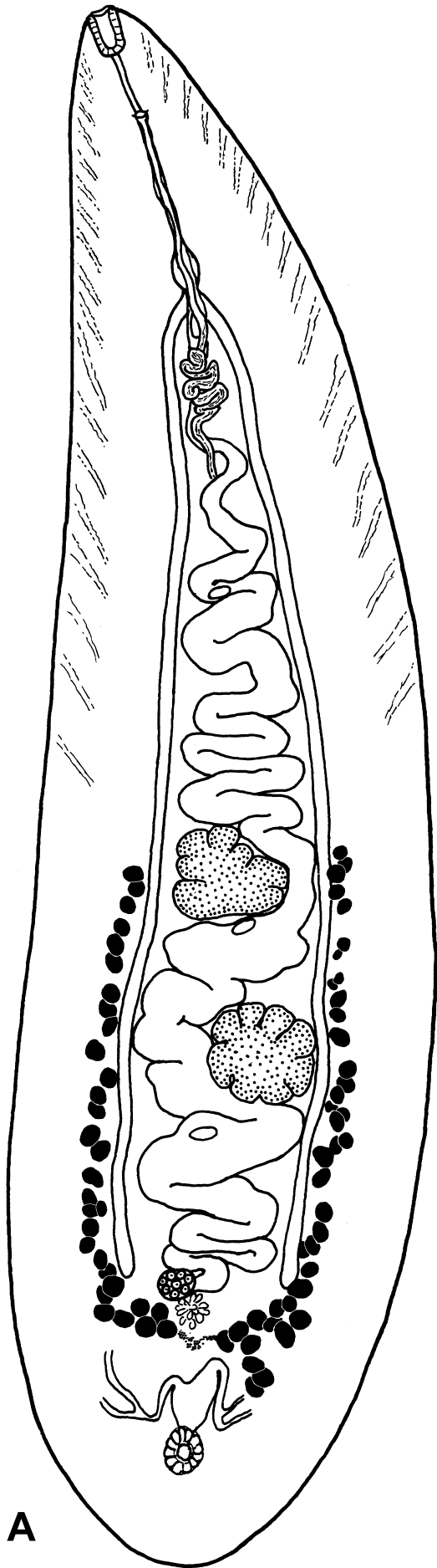
Key Words: Platyhelminthes, Digenea, Microscaphidiidae, Pronocephalidae, *Paradeuterobaris victoriae*, *Buckarootrema minuta*, *Emydura victoriae*, turtle, parasite, Northern Territory, Australia

FIGURE LEGENDS

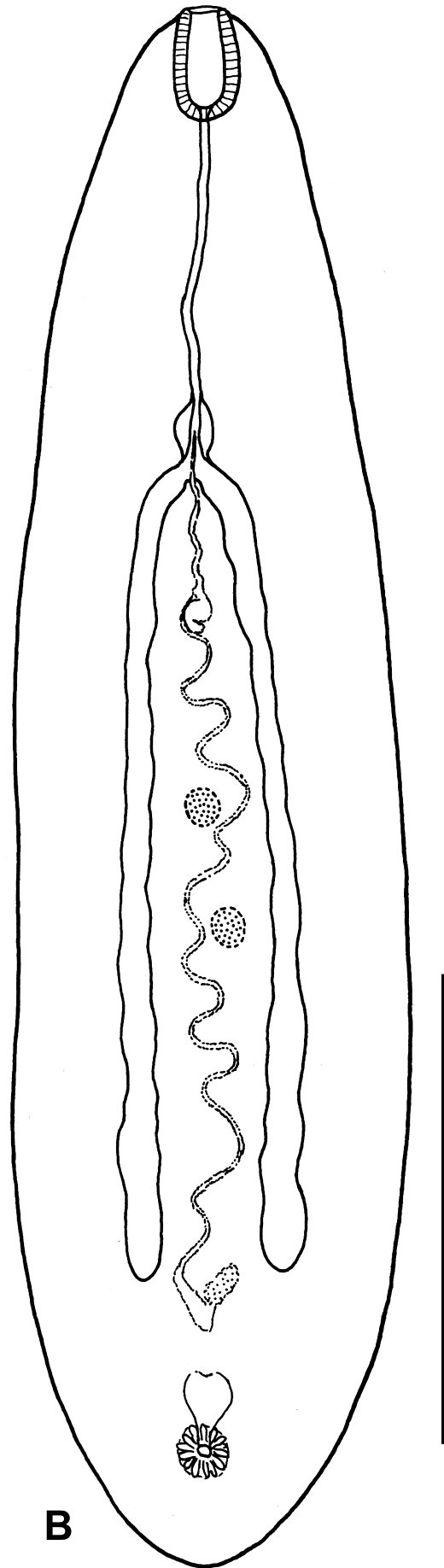
Figure 1. *Paradeuterobaris victoriae* n. sp. **A.** Holotype. **B.** Juvenile specimen. Scale-bars: **A** equal 1 mm, **B** equal 0.5 mm.

Figure 2. *Paradeuterobaris victoriae* n. sp.: **A.** Arrangement of the ventral glands in the holotype (fixed, unstained specimen). **B.** Details of the female reproductive system. **C.** Morphological details at the posterior part of the body. Note that the lateral excretory canals begin at the apical part of the excretory bladder.

Figure 3. *Buckarootrema minuta* n. sp. **A** – holotype. **B,C** – paratypes. Scale-bar equal 0.5 mm.



A



B

