

RUNNING HEAD: TKACH AND SNYDER — NEW DIGENEAN FROM

CARETTOCHELYS INSCULPTA

***Doodytrema carettochelydis* n. gen., n. sp. (Digenea: Microscaphidiidae) from the Pig-Nosed Turtle, *Carettochelys insculpta*. (Pleurodira: Chelidae) in Australia**

VASYL V. TKACH^{1,3} and SCOTT D. SNYDER²

¹ Department of Biology, University of North Dakota, Grand Forks, ND 58202, U.S.A.

(email: vasyi.tkach@und.nodak.edu)

² Department of Biology, University of Nebraska at Omaha, Omaha, NE 68182, U.S.A.

(email: sdsnyder@mail.unomaha.edu)

³Corresponding author

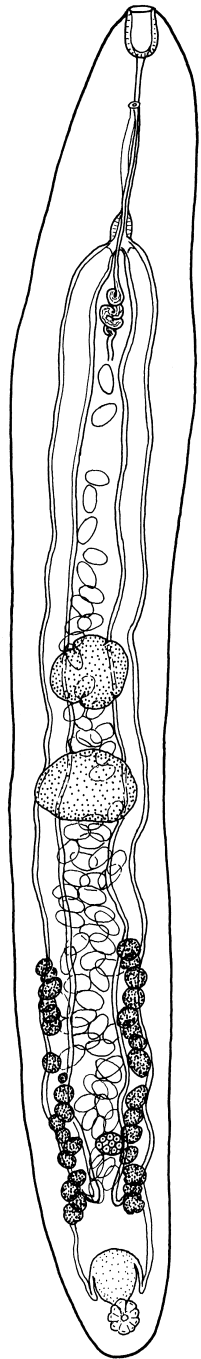
ABSTRACT: *Doodytrema carettochelydis* n. gen., n. sp. (Digenea: Microscaphidiidae) is described from the Pig-nosed turtle, *Carettochelys insculpta* (Cryptodira: Chelidae) from the Daly River, Northern Territory, Australia. *Doodytrema* n. gen. is differentiated from other microscaphidiid genera by the absence of pharyngeal diverticula and the organization of vitellarium, namely the absence of an intercecal vitelline field or vitelline fields that merge behind the ovary. The uterus of *Doodytrema carettochelydis* n. sp. differs dramatically from other microscaphidiids in that that the uterus does not run between the testes, but instead passes dorsal to them. This is only the second microscaphidiid species from Australian freshwater turtles.

Key Words: Platyhelminthes, Digenea, Microscaphidiidae, *Doodytrema carettochelydis*, *Carettochelys insculpta*, turtle, parasite, Northern Territory, Australia

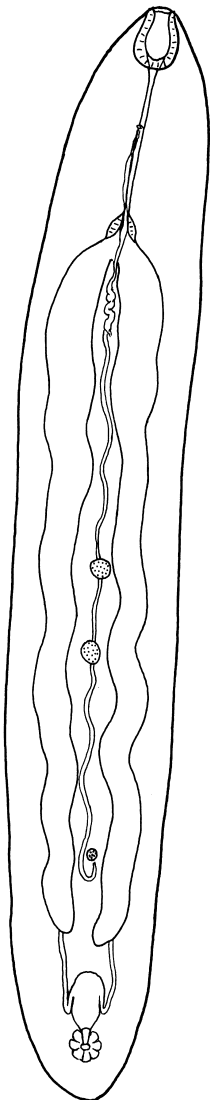
FIGURE LEGENDS

Figures 1-3. *Doodytrema carettochelydis* n. gen., n. sp.: **1.** Holotype. **2, 3.** Juvenile specimens. Scale-bars: **1, 2** = 1 mm, **3** = 0.5 mm. Note that excretory canals originate at the lateral margins of the excretory bladder.

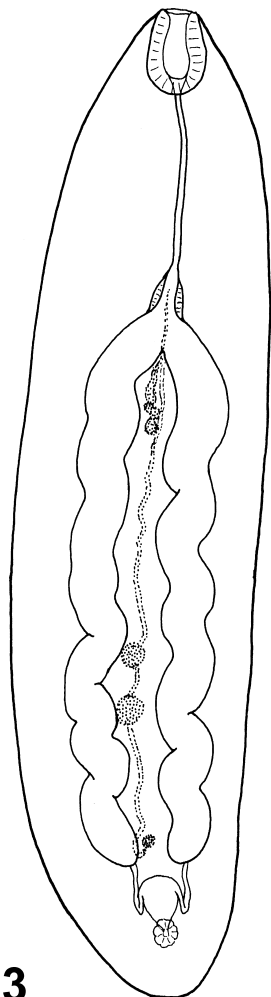
Figures 4-7. *Doodytrema carettochelydis* n. gen., n. sp.: **1, 2.** Anterior end. Note numerous papillae arranged in two wide circles around the oral opening (antero-ventral view). **3, 4.** Arrangement of tegumental papillae on ventral surface. Scale-bars: **1** = 20 μm , **2** = 5 μm , **3** = 1 μm , **4** = 0.5 μm



1



2



3

