

How to Login to Windows 10

1. Turn on devices that you wish to use. If computer or other devices are contained in a cabinet, turn handle counter clockwise to open. **Cabinets are not locked.**



Please flip this sheet over for specific instructions on how to setup the projector and select what should be displayed on screen.

2. Login to the computer

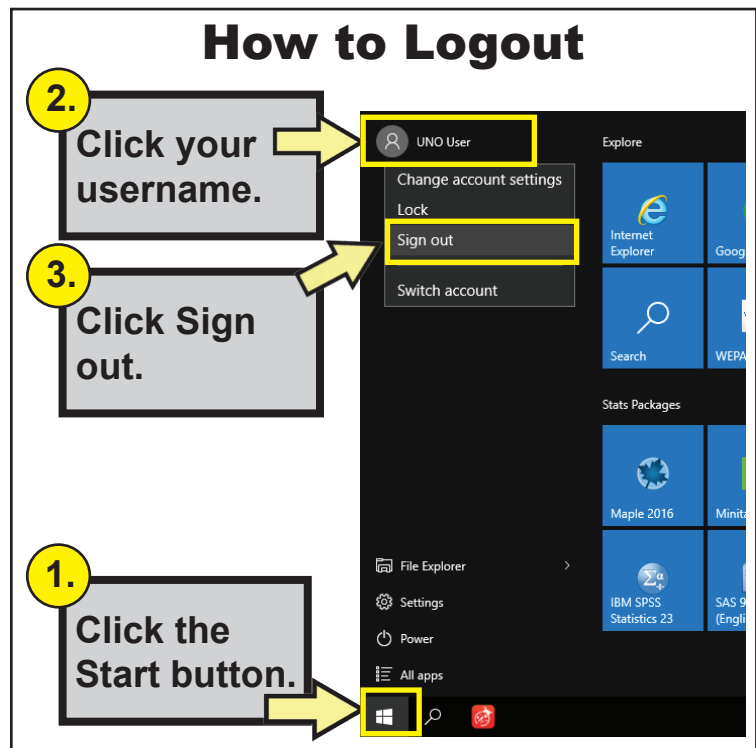
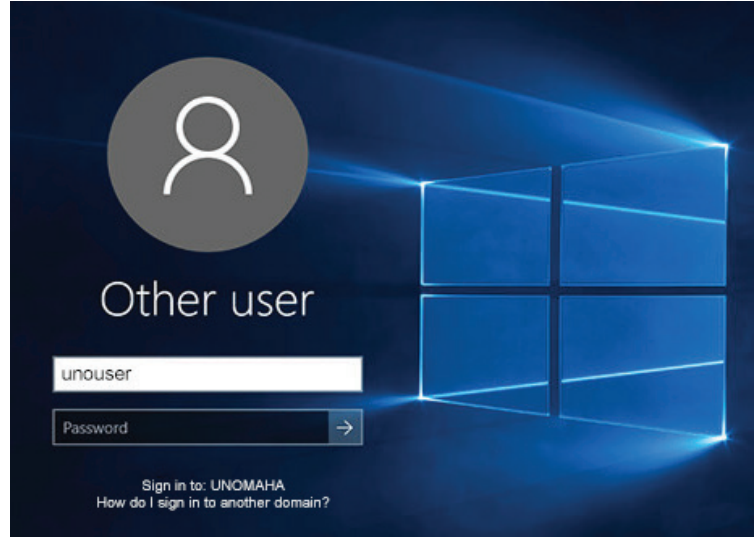
Press the space bar to get to the login screen. **The first time you log in, it will take up to 2 minutes to setup.**

There are two ways to login to this workstation:

1. Login as yourself. In the Username field type your **NetID username** (same as your e-mail, or Blackboard). In the Password field type your **NetID password**. Click the **Arrow** to login.

2. If you do not have a NetID username, use *unouser* as the login. If the screen displays another Username and / or Password, simply delete the entries, type ***unouser*** for the user name and leave the password field blank. Click the **Arrow** to login.

3. Click the  Start button to launch your app.



Need Help?

For help or training with this equipment please contact Information Services Technical Support.

Call: 554-4915

Help is available Monday through Friday 8AM- 5PM