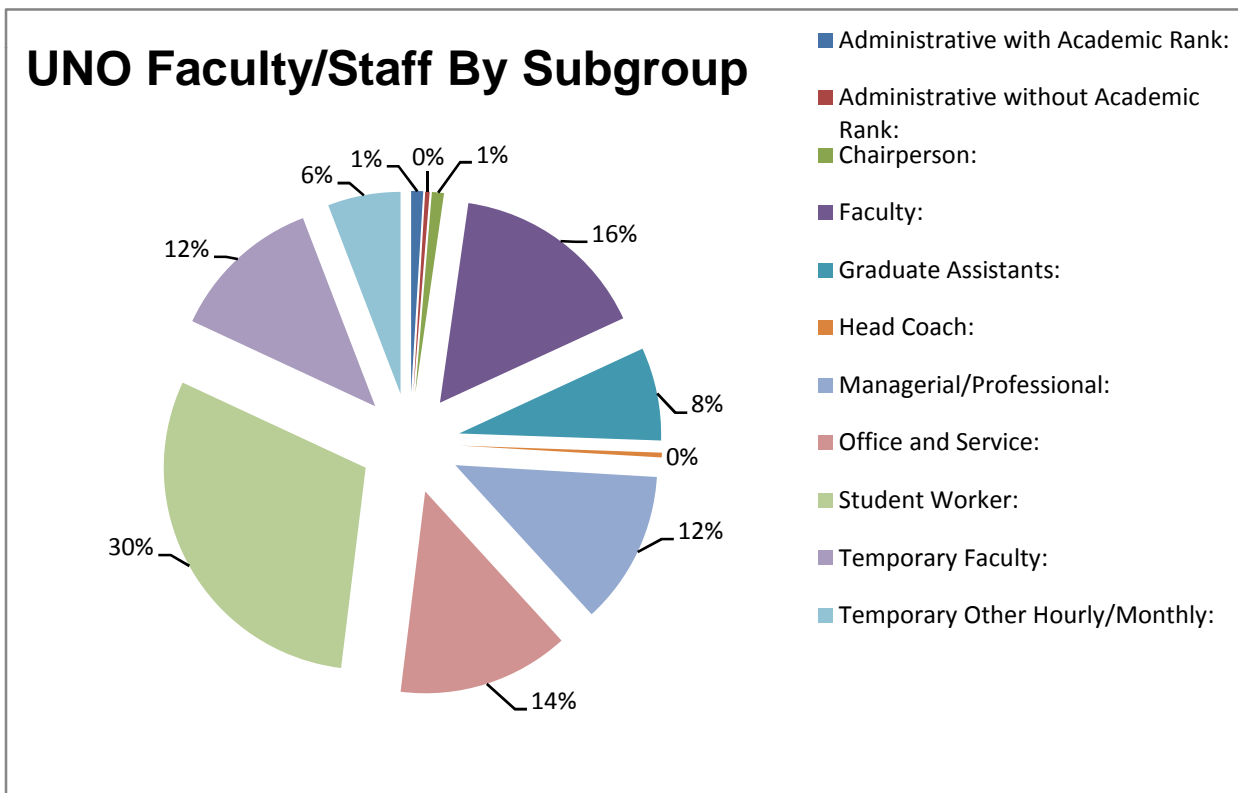


UNO Faculty/Staff By Subgroup

| Employee Subgroup | Count |
|---------------------------------------|-------------|
| Administrative with Academic Rank: | 29 |
| Administrative without Academic Rank: | 11 |
| Chairperson: | 30 |
| Faculty: | 489 |
| Graduate Assistants: | 230 |
| Head Coach: | 12 |
| Managerial/Professional: | 379 |
| Office and Service: | 424 |
| Student Worker: | 926 |
| Temporary Faculty: | 378 |
| Temporary Other Hourly/Monthly: | 180 |
| Total: | 3088 |



Faculty count includes:

| | |
|----------------|-----|
| Specific Term: | 112 |
| Special: | 102 |
| Tenured: | 275 |