



NEBRASKA TRENDS IN ADULT JUSTICE

January, 2009

Consortium for Crime
and Justice Research

School of Criminology and Criminal Justice
University of Nebraska at Omaha

Prepared by:

- ❖ Chris Marshall
- ❖ Hank Robinson
- ❖ Rebecca Trammell
- ❖ Nicole Kennedy
- ❖ Julie Rogers
- ❖ Alison King

January 2009

This report illustrates recent trends in Nebraska's Adult Criminal Justice System.

The report focuses on five regions in the state: Northern, Eastern, Southeast, Central, and Western. Twelve counties represent each of the five regions. The twelve counties represent the most populous counties from each of these regions.

While the data source for most of the smaller discussions and displays of data are illustrated with the chart or table, the large tables on most pages combine information from multiple sources such as FBI Uniform Crime Reports, Census data, the Department of Correctional Services, the Nebraska Crime Commission, and others. If specific information for the data sources are needed please contact us using the contact information on the back cover.

The report follows the stages of the process within the criminal justice system:

- The environmental context page provides the reader with data on population information in the counties, such as household income, education, unemployment, and racial composition.
- The next section, the system context, focuses law enforcement data and illustrates the hierarchical structure for a typical county sheriff's office.
- Criminal offense data illustrates reports of violent and property offenses and compares 2007 data with previous 2002 data.
- The next trend looks at actual adult arrest data, and how the percentage has changed between 2002 and 2007.
- The adult courts page documents how cases are divided across courts: civil, domestic relations, criminal, and appellate cases.
- The final two pages review corrections data in several categories.

Hopefully by taking the reader step-by-step through the processing of the criminal justice system, they are given a clearer understanding of the data that shows us where Nebraska is in terms of crime. It is our hope that this report will be used as a reference guide when questioning certain aspects of the state of criminal justice in Nebraska.

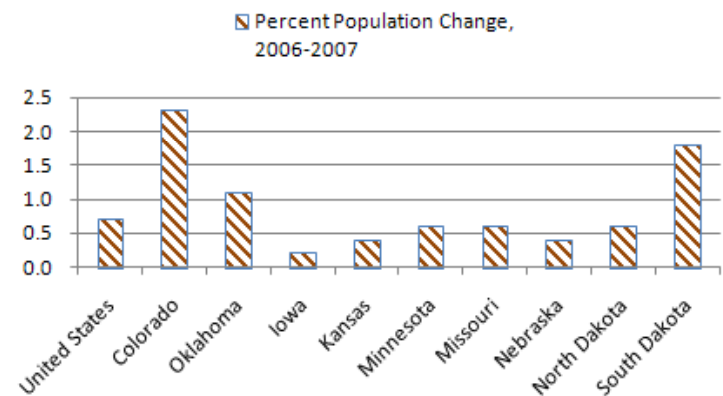
UNO's School of Criminology and Criminal Justice thanks Dr. Jack Lewis for his financial support of this report.

Environmental Context

State Region	County	Population Estimate (2006)	Persons per Household (2000)	% NonWhite (2006)	% HS Grad or Higher (2006)	Median Household Income (2004)	% All Ages in Poverty (2004)	Civilian Labor Unemp. Rate (2006)	Average Travel Time (mins.) to Work (2000)	Federal Govt. per Capita Expenditure (2004)
Northern	Dodge	36,171	2	2.4	84	\$40,241	10	3.4	20	5,351
	Holt	10,610	2	1.0	85	\$35,139	12	2.7	16	7,914
	Madison	497	3	1.6	89	\$35,869	12	2.4	29	7,389
Eastern	Douglas	492,003	2	16.6	87	\$47,193	11	3.4	19	5,846
	Sarpy	142,637	3	8.0	93	\$60,782	5	2.8	19	7,686
Southeast	Lancaster	267,135	2	8.9	91	\$46,560	10	2.8	18	7,339
Central	Hall	55,555	3	3.6	82	\$40,018	12	3.1	15	5,498
	Buffalo	43,954	2	2.7	89	\$41,036	11	2.2	16	4,349
	Adams	33,185	2	4.6	86	\$38,732	10	2.9	16	5,557
Western	Scotts Bluff	36,546	2	4.3	80	\$33,995	15	3.3	15	6,413
	Lincoln	35,865	2	2.8	86	\$41,103	11	2.8	16	5,967
	Red Willow	10,865	2	1.7	88	\$35,646	10	2.7	12	7,073
Nebraska Total		1,758,671	2.8	8.3	85.4	\$37,143	10.2	2.8	18.2	7,490

- The 0.6 percent population growth rate between 2006 and 2007 was the largest Nebraska has experienced in 10 years
- The minority population is estimated to represent more than 25 percent of the under 5 population and more than 15 percent of the state's 2007 total population
- The White non-Hispanic or majority population grew in only 10 of Nebraska's 93 counties between 2000 and 2007 while the minority population grew in all but two Nebraska counties

Source: Drozd & Deichert, 2007 Nebraska Population Report

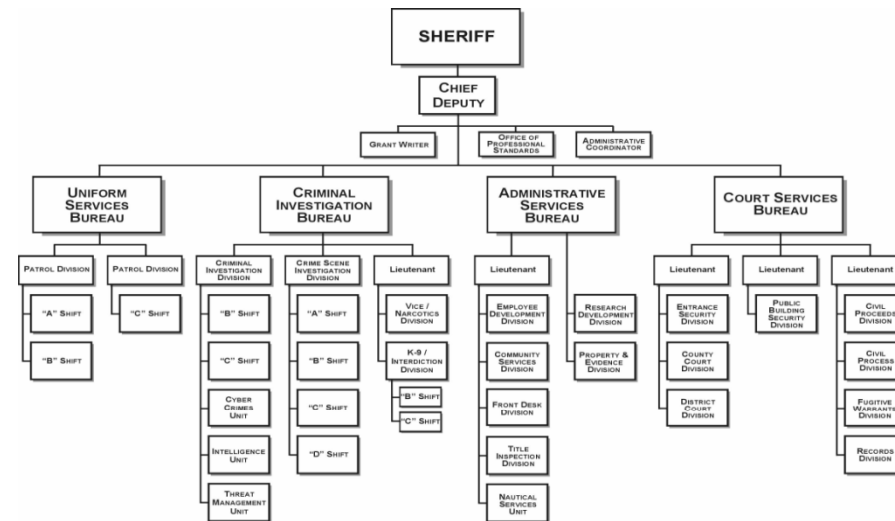


Source: FBI's Uniform Crime Report, 2007

System Context

State Region	County	Population Covered (2007)	Full-Time Sworn Male Officers (2007)	Full-Time Sworn Female Officers (2007)	Full-Time Civilian Male Employees (2007)	Full-Time Civilian Female Employees (2007)	Officers per 1000 Population
Northern	Dodge	36,104	53	4	2	14	2
	Holt	10,489	12	0	0	2	1
	Madison	35,299	54	1	3	20	2
Eastern	Douglas	494,542	742	164	82	152	2
	Sarpy	145,419	236	42	24	65	2
Southeast	Lancaster	269,187	358	56	29	92	2
Central	Hall	55,748	98	6	1	16	2
	Buffalo	44,132	71	8	10	20	2
	Adams	33,486	50	4	1	15	2
Western	Scotts Bluff	35,677	66	3	2	14	2
	Lincoln	35,972	64	1	12	33	2
	Red Willow	10,788	19	1	0	6	2
Nebraska Total		1,738,931	3,041.0	367	351	943	2.0

- **2007 Nebraska Sworn Personnel**
- 3,408 full-time sworn officers with 159 vacant positions.
 - 904 officers employed full-time in sheriffs' departments.
 - 1,978 officers employed full-time in police departments.
 - 526 officers employed full-time in State Agencies.
- 1.9 full-time sworn officers per 1,000 population (based upon a population estimate of 1,774,571).
- 188 part-time sworn officers with 5 vacant positions.
- **2006 Nebraska Sworn Personnel**
- 3,483 full-time sworn officers with 103 vacant positions.
 - 956 officers employed full-time in sheriffs' departments.
 - 2,004 officers employed full-time in police departments.
 - 523 officers employed full-time in State Agencies.
- 2.0 full-time sworn officers per 1,000 population (based upon a population estimate of 1,768,331).
- 150 part-time sworn officers with 6 vacant positions.



Crime & Justice Research 2009

Source: Douglas County Sherriff, 2008

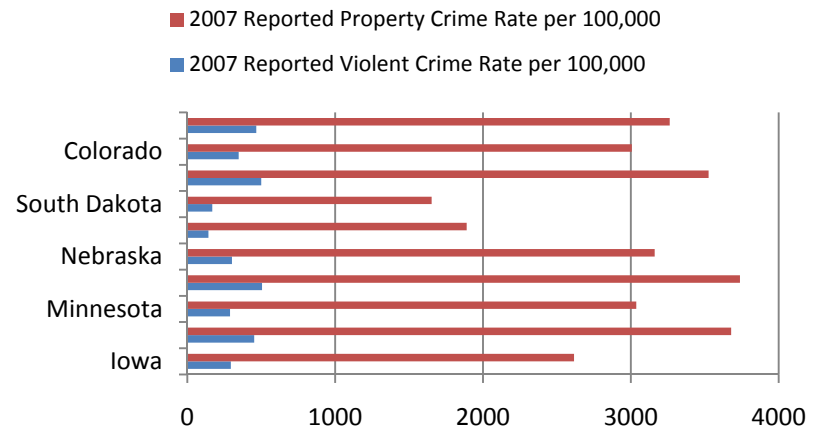
Source: 2007 Crime in Nebraska Series, Nebraska Crime Commission

Reported Offenses

State Region	County	Population (2007)	2002				2007				<u>Percent Change, 2002-2007</u>	
			Violent Offenses	Violent Rate per 1000	Property Offenses	Property Rate per 1000	Violent Offenses	Violent Rate per 1000	Property Offenses	Property Rate per 1000	Violent Offenses	Property Offenses
Northern	Dodge	36,104	28	0.8	1,272	34.8	51	1.4	911	25.2	82.1	-28.4
	Madison	35,299	84	2.4	1,526	42.9	39	1.1	758	21.5	-53.6	-50.3
	Holt	10,489	2	0.2	135	11.6	1	0.1	36	3.4	-50.0	-73.3
Eastern	Douglas	495,320	3,026	6.5	27,936	59.6	2,762	5.6	22,258	44.9	-8.7	-20.3
	Sarpy	145,419	106	0.9	3,188	25.7	94	0.6	2,959	20.3	-11.3	-7.2
Southeast	Lancaster	269,187	1,308	5.2	14,265	56.4	1,348	5.0	12,497	45.1	3.1	-14.8
Central	Hall	55,748	137	2.5	3,096	57.2	140	2.5	2,347	42.1	2.2	-24.2
	Buffalo	44,132	96	2.2	1,562	36.6	93	2.1	1,236	26.7	-3.1	-24.6
	Adams	33,486	61	1.9	1,618	51.4	60	1.8	975	29.1	-1.6	-39.7
Western	Scotts Bluff	36,449	62	1.7	1,265	33.9	88	2.4	1,233	33.8	41.9	-2.5
	Lincoln	35,972	156	4.5	1,618	46.2	81	2.3	842	23.4	-48.1	-48.0
	Red Willow	10,788	16	1.4	289	25.0	9	0.8	295	27.3	-43.8	2.1

From the Nebraska Crime Commission (2007):

- In the violent crime category, Nebraska experienced a 6% increase with 5,264 violent crimes reported during 2007 compared to 4,979 reported in 2006.
- Nationwide, the FBI recently reported that violent crimes nationwide decreased 1.4% with all of the violent crime categories showing decreases from 2006 to 2007.
- In terms of property crime, a 6% decrease occurred with 54,694 offenses reported in 2007 compared to 58,120 reported in 2006.
- The decrease in property crimes mirrored the nationwide decrease with the only exception being Motor Vehicle Theft which had a slight increase in Nebraska.



Source: FBI's Uniform Crime Report, 2007

Reported Offenses (cont.)

State Region	County	Population (2007)	Property Offenses (2007)	Simple Assault Offenses (2007)	% Violent Offenses Cleared by Arrest	% Property Offenses Cleared by Arrest	% Simple Assaults Cleared by Arrest	Violent Offenses (2007)
Northern	Dodge	36,104	911	349	41.2	12.0	32.4	51
	Madison	35,299	758	300	41.0	24.9	63.7	39
	Holt	10,489	36	28	100.0	27.8	96.4	1
Eastern	Douglas	495,320	22,258	4,945	51.5	24.1	84.8	2,762
	Sarpy	145,419	2,959	1,469	51.1	21.3	56.1	94
Southeast	Lancaster	269,187	12,497	3,631	57.7	21.5	65.5	1,348
Central	Hall	55,748	2,347	775	72.1	21.6	73.7	140
	Buffalo	44,132	1,236	507	78.5	20.1	89.0	93
	Adams	33,486	975	469	38.3	12.9	38.8	60
Western	Scotts Bluff	36,449	1,233	434	54.5	16.1	64.5	88
	Lincoln	35,972	842	353	87.7	22.8	90.7	81
	Red Willow	10,788	295	175	66.7	25.1	72	9

From the Nebraska Crime Commission (2007):

- There were 463,131 traffic stops reported to the NCC for 2007.
- Of all the traffic stops reported almost two thirds were by the Nebraska State Patrol or agencies in Douglas, Lancaster and Sarpy Counties. Over one third of the stops made statewide were by the Patrol.
- Data was submitted by 237 agencies in 2002, 226 agencies in 2003, 216 agencies in 2004, 205 agencies in 2005, 194 agencies in 2006, and 182 in 2007. Not all agencies submitted data for all 4 quarters of each year.

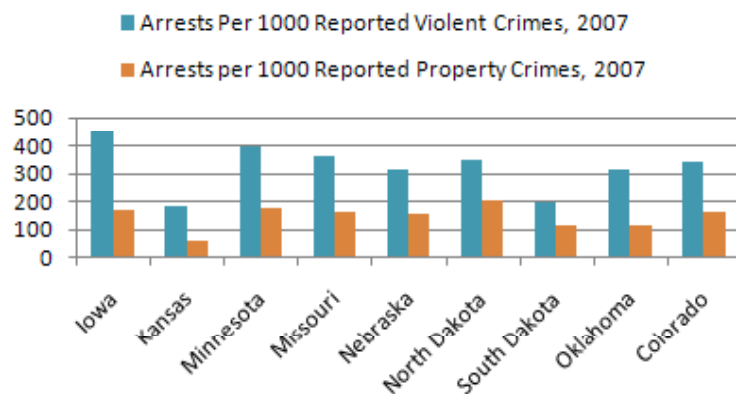
Crime Commission Grant Programs Federal Funds 2007-2008

Victim Assistance	\$2,433,000
Byrne Justice Assistance Grants	\$1,883,415
Violence Against Women	\$973,933
Juvenile Justice, Title 2	\$510,000
Meth Initiatives	\$401,220
Juvenile Accountability Incentive	\$352,545
Safe Neighborhoods	\$135,145
Residential Substance Abuse Treatment	\$61,258
Juvenile Justice, Title 5	\$75,250
	\$6,825,766

Source: Nebraska Crime Commission, 2007

Adult Arrests

State Region	County	Population (2007)	% Change 2002-2007 (All Arrests)	% Violent Arrests (2007)	% Property Arrests (2007)	Total Arrests for All Offense Types (2007)	Male to Female Arrest Ratio	White to Nonwhite Arrest Ratio	% Arrests Under 18	% Arrests 18 to 24 Years
Northern	Dodge	36,104	-7.3	1.2	5.2	1,335	3.0	21.6	17.8	43.3
	Madison	35,299	-23.9	0.8	7.7	1,590	2.4	9.4	24.7	39.1
	Holt	10,489	-22.3	0.4	1.6	254	3.2	83.7	13.3	39.9
Eastern	Douglas	495,320	-10.1	2.6	10.4	26,048	2.9	1.5	14.5	34.8
	Sarpy	145,419	15.7	1.1	11.1	3,700	2.6	6.0	29.2	35.6
Southeast	Lancaster	269,187	0.6	2.4	6.8	16,807	2.8	4.6	16.1	40.5
Central	Hall	55,748	18.3	2.4	10.9	3,693	2.9	13.1	11.5	36.1
	Buffalo	44,132	5.0	1.3	5.9	2,381	3.1	26.6	18.8	43.8
	Adams	33,486	-14.6	1.3	8.1	1,138	3.3	21.7	19.6	44.5
Western	Scotts Bluff	36,449	37.8	2.3	7.5	2,117	2.7	7.1	21.5	36.0
	Lincoln	35,972	-37.1	1.7	7.0	1,682	3.0	18.6	18.0	34.9
	Red Willow	10,788	11.5	0.7	6.7	551	2.6	38.3	20.1	36.8
Nebraska Total		1,738,931	-5.5	2	8.3	75,582	2.9	3.8	20.7	45



Source: FBI's Uniform Crime Report

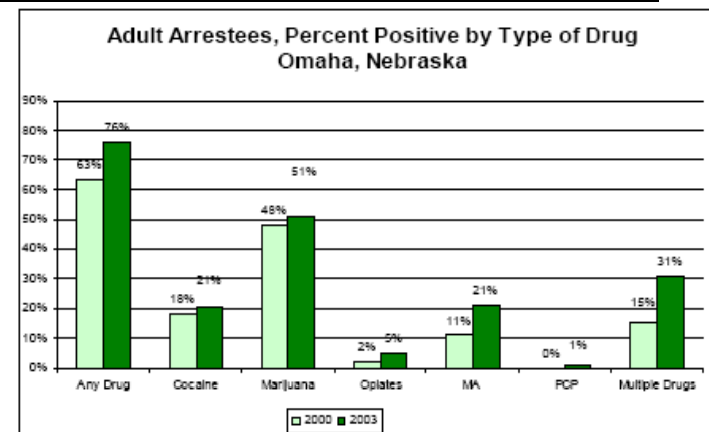


Figure 1. Percentage of Adult Arrestees Testing Positive for Illegal Substances. Source: Arrestee Abuse Monitoring Program-ADAM. Source: Moving Past the Era of Good Intentions, UNO's Juvenile Justice Institute, 2006.

Adult Courts

State Region	County	Population (2007)	% Criminal Cases	% Regular Civil Cases	% Domestic Relations Cases	% Appellate Action Cases	Total Court Cases (2007)
Northern	Dodge	36,104	12.5	17.3	67.0	3.2	758
	Holt	35,299	16.8	29.5	49.5	4.2	190
	Madison	10,489	22.2	9.9	65.6	2.3	794
Eastern	Douglas	495,320	23.7	15.0	58.6	2.7	14,111
	Sarpy	145,419	27.3	15.2	54.7	2.8	2,495
Southeast	Lancaster	269,187	19.7	17.0	59.3	3.9	5,758
Central	Hall	55,748	27.9	10.4	59.7	1.9	1,628
	Buffalo	44,132	20.3	17.1	54.2	8.3	983
	Adams	33,486	10.2	26.3	53.9	9.6	935
Western	Scotts Bluff	36,449	19.5	16.3	61.0	3.2	1,187
	Lincoln	35,972	23.3	18.4	57.0	1.4	937
	Red Willow	10,788	13.9	26.7	57.2	2.2	180

Nebraska District Court % of State's Caseload 2007

District 4	Douglas	34%
District 3	Lancaster	14%
District 2	Sarpy	8%
District 5		6%
District 9	Buffalo Hall	6%
District 11	Lincoln Red Willow	6%
District 12	Scotts Bluff	6%
District 1		5%
District 6	Dodge	5%
District 7	Madison	4%
District 10	Adams	4%
District 8	Holt	2%

Source: The Courts of Nebraska, District Court Annual Caseload Report, 2007

Nebraska County Court % of State's Caseload 2007

District 4	Douglas	25%
District 2	Sarpy	16%
District 3	Lancaster	10%
District 11	Lincoln Red Willow	9%
District 9	Buffalo Hall	7%
District 5		6%
District 12	Scotts Bluff	6%
District 6	Dodge	6%
District 1		4%
District 7	Madison	4%
District 10	Adams	4%
District 8	Holt	3%

Source: The Courts of Nebraska, County Court Annual Caseload Report, 2007

Adult Corrections

Inmate Capacity for Nebraska's Correctional Facilities, 2008.

Facility	Capacity	Count	Percent of Capacity
Community Corrections Lincoln	200	376	188.0%
Community Corrections Omaha	90	161	178.9%
Dianostic & Evaluation Center	160	324	202.5%
Lincoln Correctional Center	308	475	154.2%
Nebraska Correctional Center for Women	275	283	102.9%
Nebraska Correctional Youth Facility	68	101	148.5%
Nebraska State Penitentiary	718	1,000	139.3%
Omaha Correctional Center	396	665	167.9%
Tecumseh State Correctional Institution	960	943	98.2%
Grand Total	3,175	4,328	136.3%

Source: Nebraska Department of Correctional Services, 2008.

Most Serious Offense of Male Nebraska Inmates, 2008.

Offense Category	Count	Percent
Sex Offenses	736	18.2%
Drugs	574	14.2%
Assault	530	13.1%
Homicide	486	12.0%
Robbery	429	10.6%
Burglary	383	9.5%
Theft	381	9.4%
Motor Vehicle	294	7.3%
Fraud	120	3.0%
Other	116	2.9%
Weapons	93	2.3%
Morals	71	1.8%
Restraint	67	1.7%
Arson	21	0.5%
Grand Total	4,037	100.00%

Source: Nebraska Department of Correctional Services, 2008.

Most Serious Offense of Female Nebraska Inmates, 2008.

Offense Category	Count	Percent
Drugs	127	32.3%
Theft	62	15.8%
Fraud	49	12.5%
Motor Vehicle	39	9.9%
Assault	37	9.4%
Homicide	26	6.6%
Other	22	5.6%
Burglary	18	4.6%
Robbery	13	3.3%
Sex Offenses	13	3.3%
Weapons	3	0.8%
Arson	2	0.5%
Morals	1	0.3%
Grand Total	393	100.0%

Source: Nebraska Department of Correctional Services, 2008.

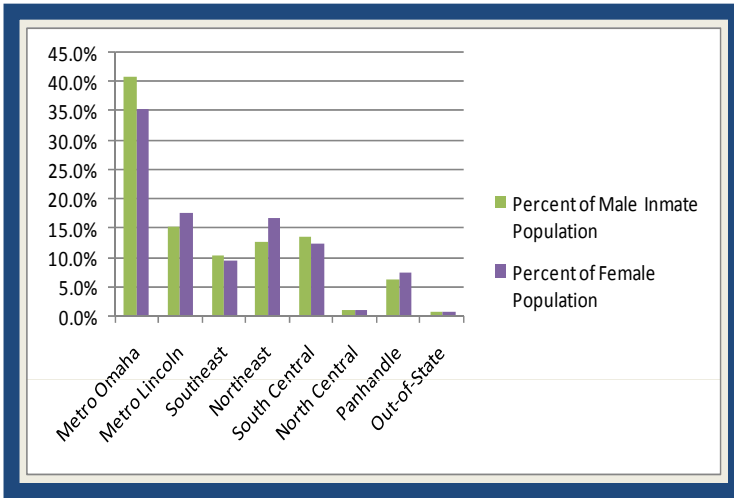
Racial Composition of Nebraska's Inmate Population, 2008

Race	Count	Percent
ASIAN	30	0.7%
BLACK	1,136	26.2%
HISPANIC	543	12.5%
NATIVE AMERICAN	208	4.8%
OTHER	11	0.3%
WHITE	2,399	55.4%
Grand Total	4,328	100.0%

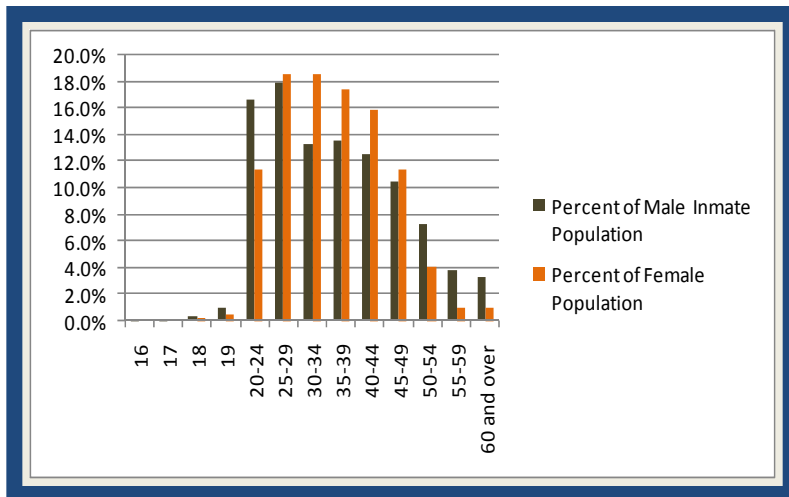
Source: Nebraska Department of Correctional Services, 2008.

Adult Corrections (cont.)

ADULT INMATE POP. CONTAINMENT BY REGION & GENDER



ADULT INMATE POP. BY AGE GROUP & GENDER



Source: Nebraska Department of Correctional Services, FY 2007 Statistical Report

ADULT INMATE POPULATION CONTAINMENT BY LENGTH OF STAY AND GENDER

Month/Year	Male	Percent of Male Total	Female	Percent of Female Total
7-12 Months	199	5.0%	25	6.0%
13-18 Months	821	20.6%	134	32.4%
19-24 Months	530	13.3%	80	19.3%
24-30 Months	190	4.8%	23	5.6%
31-36 Months	524	13.1%	54	13.0%
37-42 Months	241	6.0%	18	4.3%
43-48 Months	139	3.5%	9	2.2%
49-54 Months	139	3.5%	18	4.3%
55-60 Months	125	3.1%	7	1.7%
5.01-6.00 Years	209	5.2%	11	2.7%
6.01-7.00 Years	115	2.9%	11	2.7%
7.01-8.00 Years	110	2.8%	7	1.7%
8.01-9.00 Years	83	2.1%	3	0.7%
9.01-10.00 Years	68	1.7%	2	0.5%
10.01-11.00 Years	47	1.2%	2	0.5%
11.01-12.00 Years	45	1.1%		
12.01-13.00 Years	49	1.2%		
13.01-14.00 Years	47	1.2%	3	0.7%
14.01-15.00 Years	43	1.1%	1	0.2%
15.01-16.00 Years	34	0.9%	1	0.2%
16.01-17.00 Years	19	0.5%		
17.01-18.00 Years	25	0.6%	1	0.2%
18.01-19.00 Years	8	0.2%	1	0.2%
19.01-20.00 Years	20	0.5%		
Over 20 Years	158	4.0%	3	0.7%
Total	3,988	100.0%	414	100.0%

Source: Nebraska Department of Correctional Services, FY 2007 Statistical Report

For any questions or concerns regarding anything in this report, please contact one of the following:

Alison King
Juvenile Justice Institute
School of Criminology and Criminal Justice
College of Public Affairs and Community Service
University of Nebraska at Omaha
CB 218
6001 Dodge St. Omaha NE 68182
402-554-3798
aking@unomaha.edu

Colleen Cunningham
Juvenile Justice Institute
School of Criminology and Criminal Justice
College of Public Affairs and Community Service
University of Nebraska at Omaha
CB 218
6001 Dodge St. Omaha NE 68182
402-554-3794
crcunningham@unomaha.edu