



State and Local Population Counts and Trends: Focus on 2010 Census Data

March 22, 2011

College of Public Affairs and Community Service Bldg
University of Nebraska Omaha

Jerry Deichert, David Drozd
Center for Public Affairs Research (CPAR)
University of Nebraska Omaha
www.unomaha.edu/cpar

United States®
Census
2010

UNIVERSITY OF
Nebraska
Omaha

Presentation Roadmap

- Highlights for Nebraska
- County data
- Sub-county information
- Racial changes





Census Data Released to Date

- 2010 Census:
 - State Count and Apportionment
 - Resident counts (total population) for all local areas, including counties and cities, even individual blocks
 - Allows redistricting – making geographic boundaries of elected offices of equal population size
 - Population counts by race and ethnicity
 - Also for the voting age population aged 18 and older
- American Community Survey
 - Socio-economic data
 - Full data now available for most topics; data comes annually
 - Utilizes a 5-year aggregation for geographies with less than 20,000 population
 - Smaller sample creates margin of error issues – BE CAREFUL



2010 Census Highlights

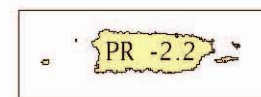
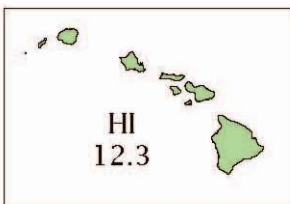
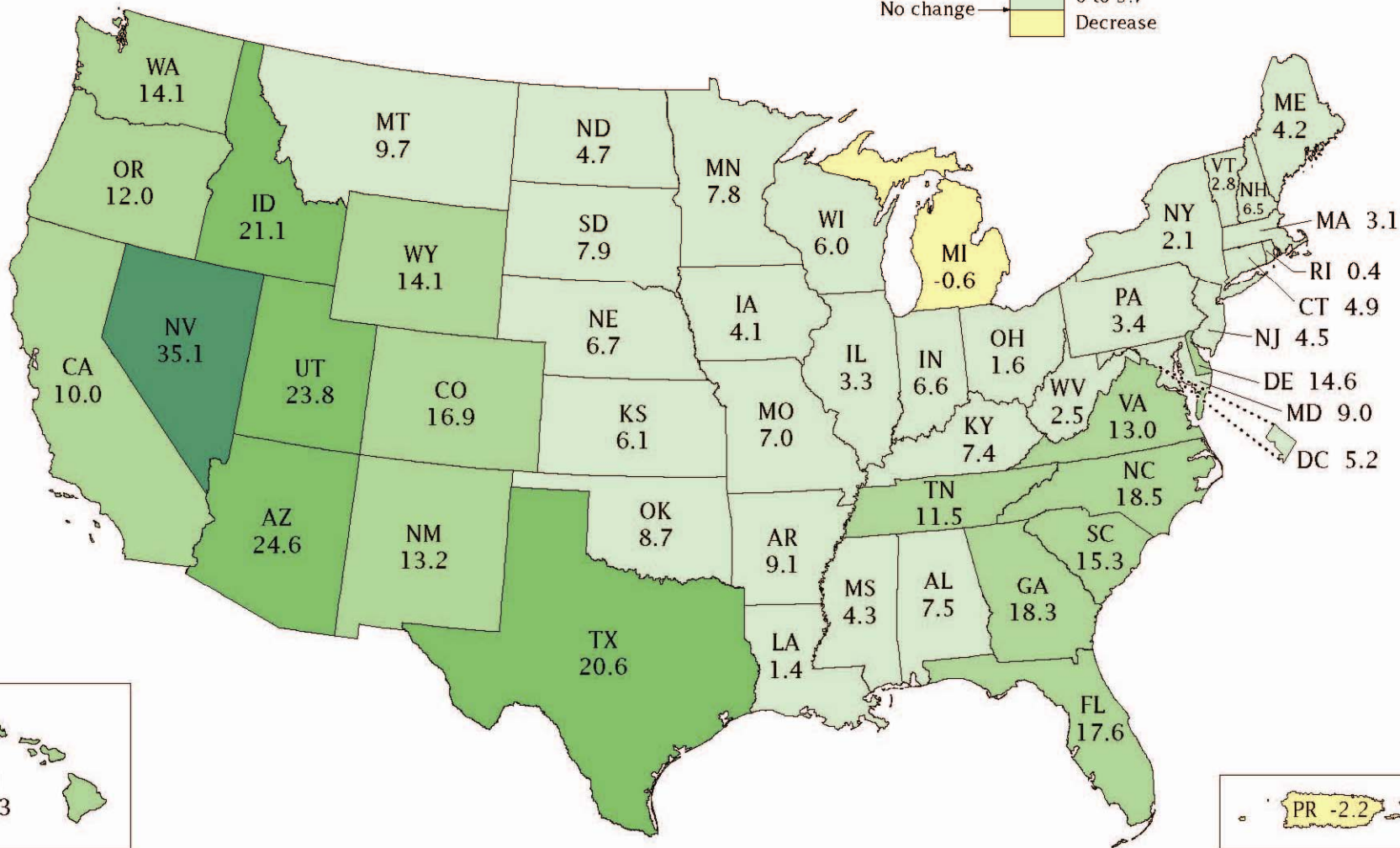
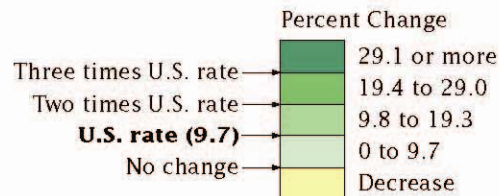
- Nebraska now has 1,826,341 persons, an increase of 115,076 or 6.7 percent from the 2000 count of 1,711,265
 - Nebraska ranked 30th regarding percent change (percent change rank up from 37th in 1990s)
 - Nebraska bested the 4.1 and 6.1% growth rates in Iowa and Kansas
- 24 Nebraska counties gained population while 69 lost population between 2000 and 2010
 - Compares to 40 growing counties in the 1990s and only 10 in the 1980s
 - NE has a high percentage of counties with loss compared to nearby states
- Sarpy, Lancaster and Douglas counties are among the state's fastest growing
 - These are also the state's 3 largest counties so concentration of the state's population into its metropolitan areas is continuing to occur
 - 23 counties lost 10% or more of their population between 2000 and 2010



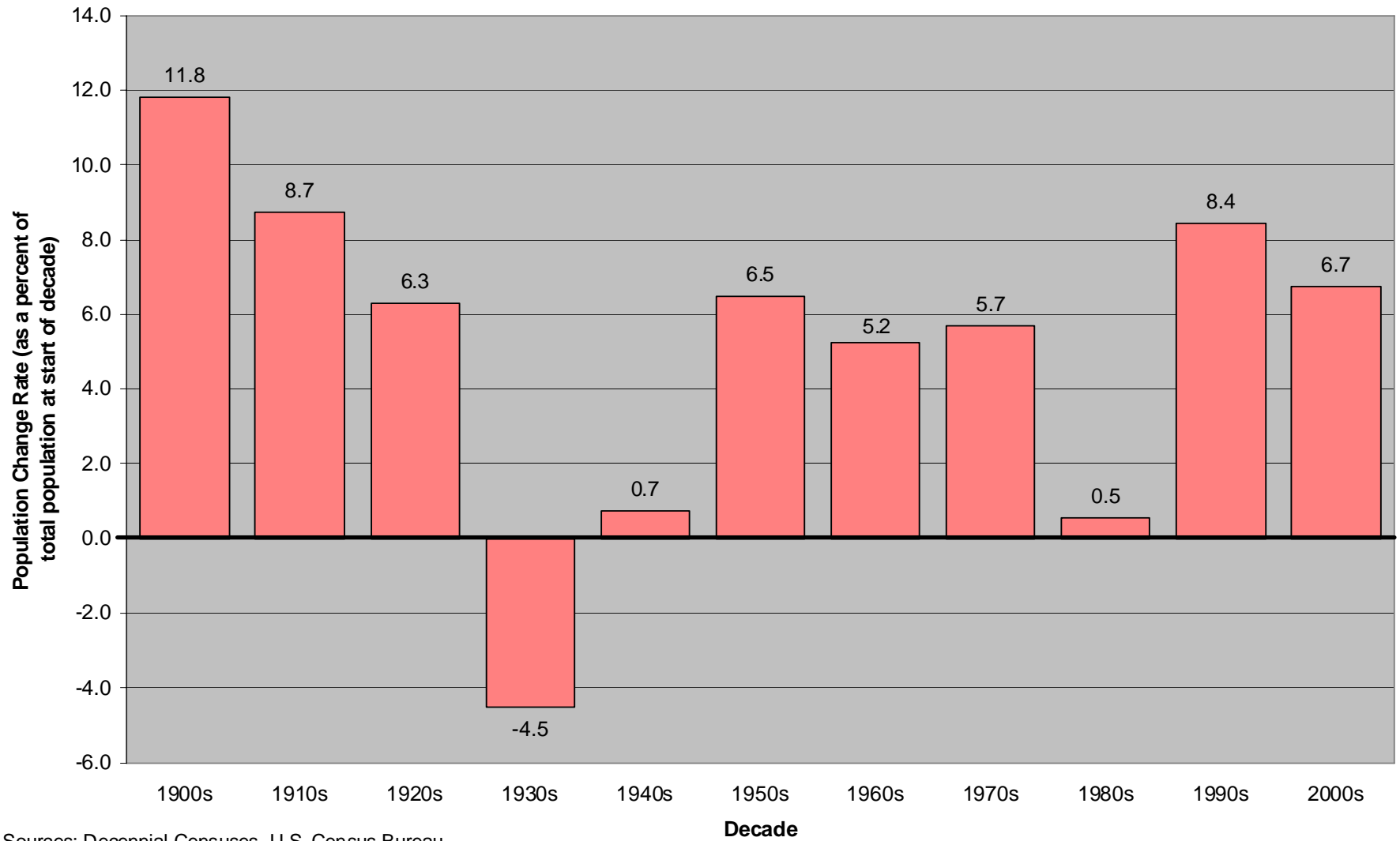
Highlights continued

- The 1st and 2nd Congressional Districts gained population while the 3rd District lost population
 - Boundaries will be redrawn by the Unicameral Legislature to have equal population
- Only 143 communities gained population in the 2000s versus 289 in the 1990s
 - More than 200 communities lost more than 10% of their population in the 2000s decade
- Nebraska's population growth is predominately in minority racial and ethnic groups
 - Hispanic or Latino (of any race) grew by 77 percent
 - Accounted for nearly two-thirds of state's overall growth
 - Asian, non Hispanic grew by 47 percent
 - The White, non Hispanic population barely increased (0.4%)

Percent Change in Resident Population for the 50 States, the District of Columbia, and Puerto Rico: 2000 to 2010



Nebraska Population Change Rate by Decade: 1900s to 2000s



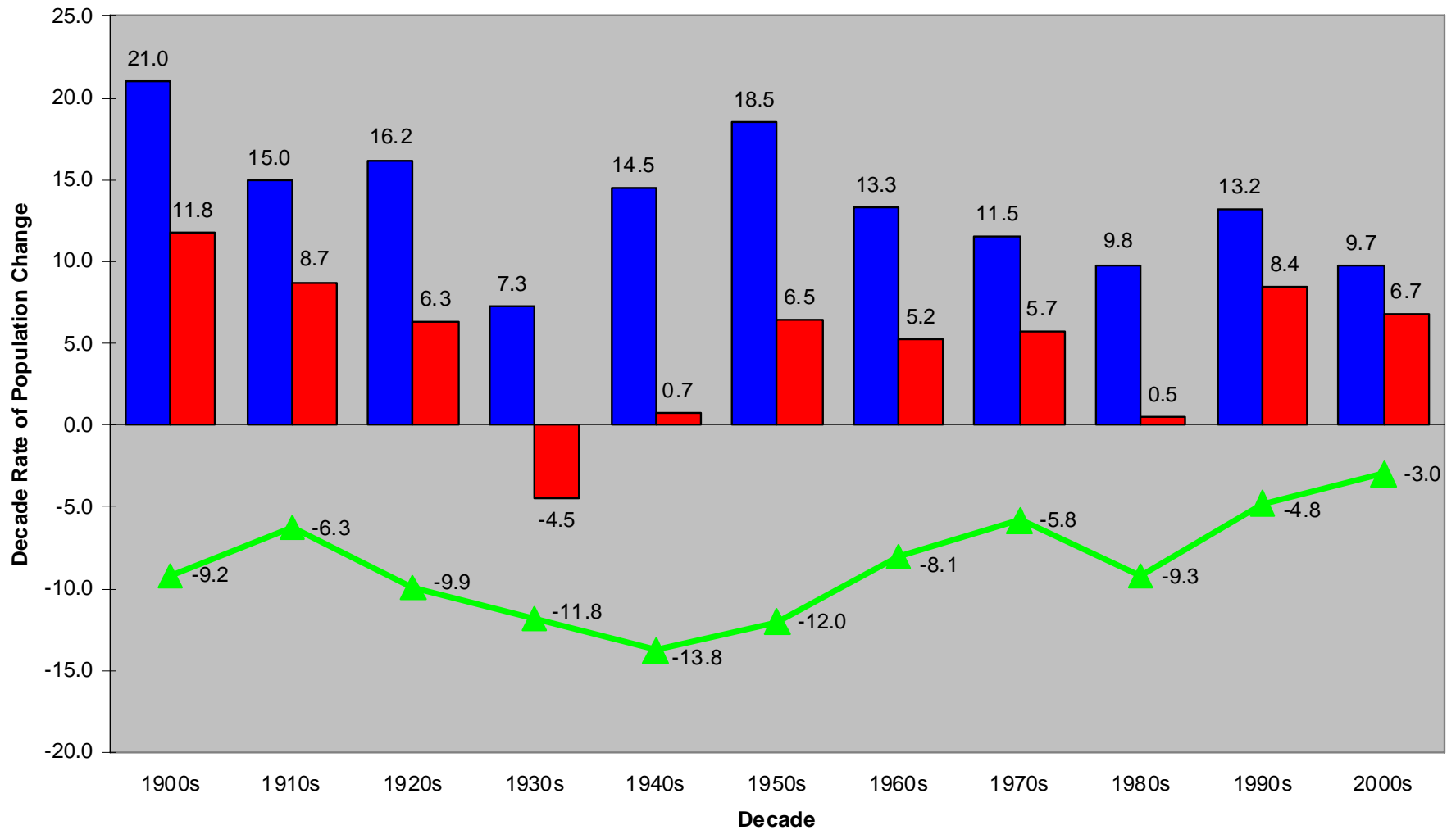
Sources: Decennial Censuses, U.S. Census Bureau



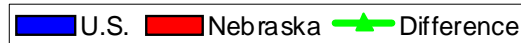
Comparison of Number of Seats from Last Nebraska Seat to 435 cutoff

<u>Year</u>	<u>NE 3rd Seat #</u>	<u>Distance to 435</u>	
1960	316	119	
1970	337	98	-21
1980	358	77	-21
1990	388	47	-30
2000	405	30	-17
2010	417	18	-12
2020	???	Danger of losing House seat!	

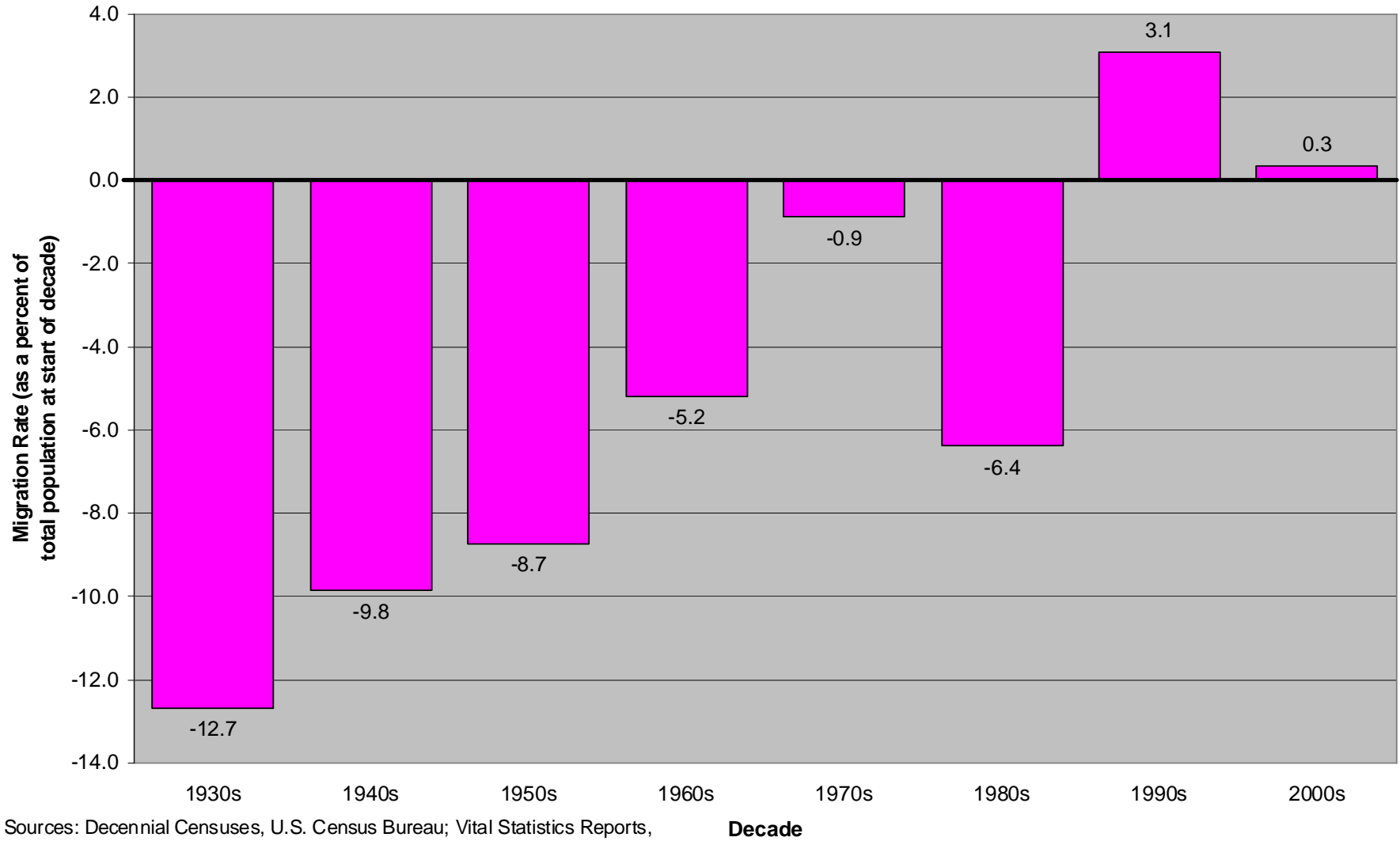
Comparison of Population Change Rates in Nebraska and the U.S.: 1900s to 2000s decades



Sources: Decennial Censuses, U.S. Census Bureau



Nebraska Net Migration Rate by Decade: 1930s to 2000s



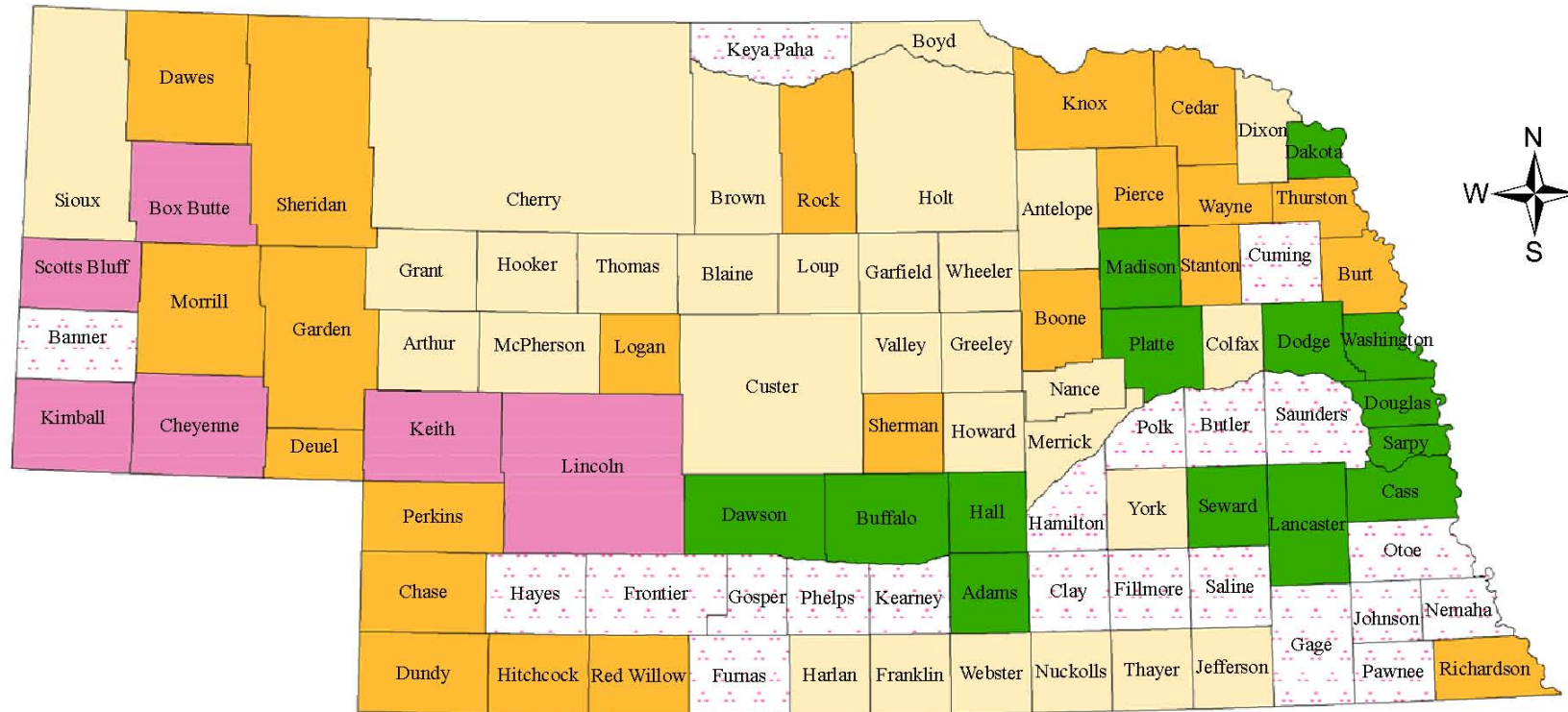
Sources: Decennial Censuses, U.S. Census Bureau; Vital Statistics Reports, Nebraska Department of Health and Human Services

Listing of Nebraska Counties by Year of Highest Census Population

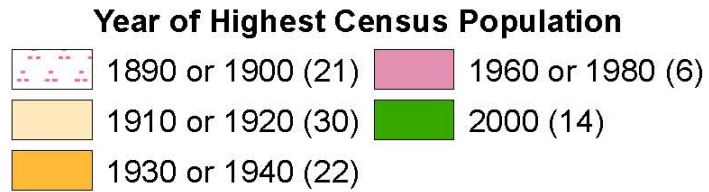
Census Year (Number of Counties Having Highest Census Population)

1890 (10)	1900 (11)	1910 (12)	1920 (18)	1930 (21)	1940 (1)	1960 (2)	1980 (4)	2000 (2)	2010 (12)
Banner	Butler	Boyd	Antelope	Boone	Rock	Cheyenne	Box Butte	Dawson	Adams
Clay	Cuming	Franklin	Arthur	Burt		Kimball	Keith	Madison	Buffalo
Fillmore	Frontier	Harlan	Blaine	Cedar			Lincoln		Cass
Gage	Furnas	Howard	Brown	Chase			Scotts Bluff		Dakota
Hamilton	Gosper	Jefferson	Cherry	Dawes					Dodge
Hayes	Johnson	Loup	Colfax	Deuel					Douglas
Keya Paha	Kearney	McPherson	Custer	Dundy					Hall
Otoe	Nemaha	Nance	Dixon	Garden					Lancaster
Polk	Pawnee	Sioux	Garfield	Hitchcock					Platte
Saline	Phelps	Thayer	Grant	Knox					Sarpy
	Saunders	Webster	Greeley	Logan					Seward
		York	Holt	Morrill					Washington
			Hooker	Perkins					
			Merrick	Pierce					
			Nuckolls	Red Willow					
			Thomas	Richardson					
			Valley	Sheridan					
			Wheeler	Sherman					
				Stanton					
				Thurston					
				Wayne					

Year of Highest Census Population for Nebraska Counties



This map remains the same, with the counties in green making new highs in 2010, except for Madison and Dawson, whose high was in 2000.





Nebraska County Population Changes Over Time

Number of Counties that:

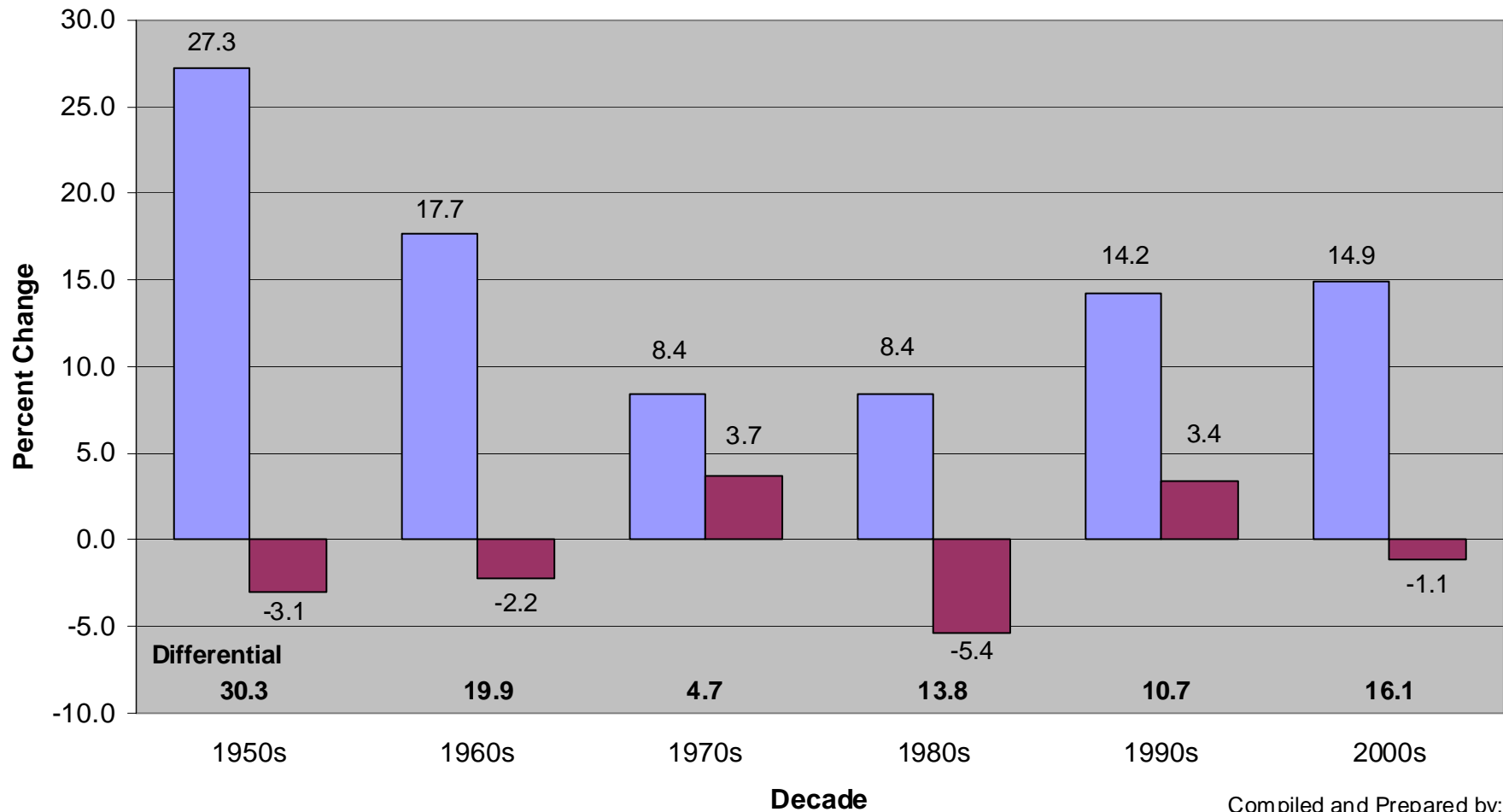
<u>Decade</u>	<u>Gained</u>	<u>Lost</u>
1950-60	23	70
1960-70	25	68
1970-80	42	51
1980-90	10	83
1990-00	40	53
2000-10	24	69



Nebraska Counties with Largest Numeric Population Gains and Losses: 2000-2010

1. Douglas	+ 53,525	84. Antelope	- 767
2. Sarpy	+ 36,245	85. Jefferson	- 786
3. Lancaster	+ 35,116	86. Thayer	- 827
4. Hall	+ 5,073	87. Box Butte	- 850
5. Buffalo	+ 3,843	88. Custer	- 854
6. Lincoln	+ 1,656	89. Burt	- 933
7. Washington	+ 1,454	89. York	- 933
8. Saunders	+ 950	91. Cuming	-1,064
9. Cass	+ 907	92. Holt	-1,116
10. Dakota	+ 753	93. Richardson	-1,168

Percentage Change in Population for Nebraska's Largest 3 Counties of Douglas, Lancaster, and Sarpy versus the Rest of the State: 1950 to 2010



Source: Decennial Censuses,
U.S. Census Bureau

■ "Big 3" counties ■ Remaining 90 counties

Compiled and Prepared by:
David Drozd, UNO Center for
Public Affairs Research

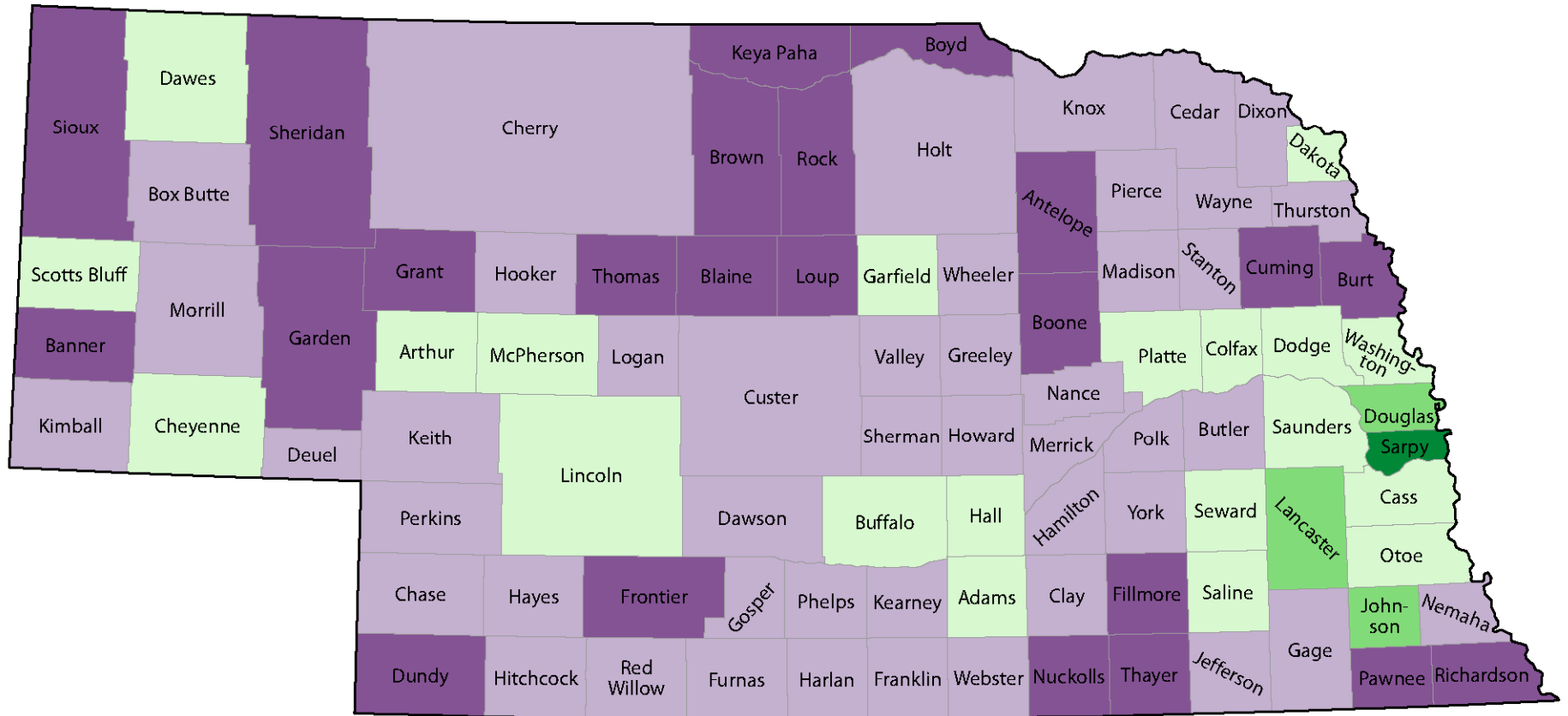


Nebraska Counties with Largest Percent Population Gains and Losses: 2000-2010

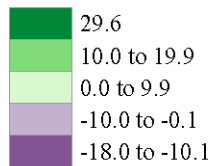
1. Sarpy	+29.6%	84. Boone	-12.0%
2. Johnson	+16.2%	85. Richardson	-12.3%
3. Lancaster	+14.0%	86. Dundy	-12.4%
4. Douglas	+11.5%	87. Rock	-13.1%
5. Hall	+ 9.5%	88. Thayer	-13.7%
6. Buffalo	+ 9.1%	89. Boyd	-13.9%
7. Washington	+ 7.7%	90. Banner	-15.8%
8. Garfield	+ 7.7%	91. Keya Paha	-16.2%
9. Saunders	+ 4.8%	92. Grant	-17.8%
10. Lincoln	+ 4.8%	93. Blaine	-18.0%

NEBRASKA - 2010 Census Results


Percent Change in Population by County: 2000 to 2010



Percent Change



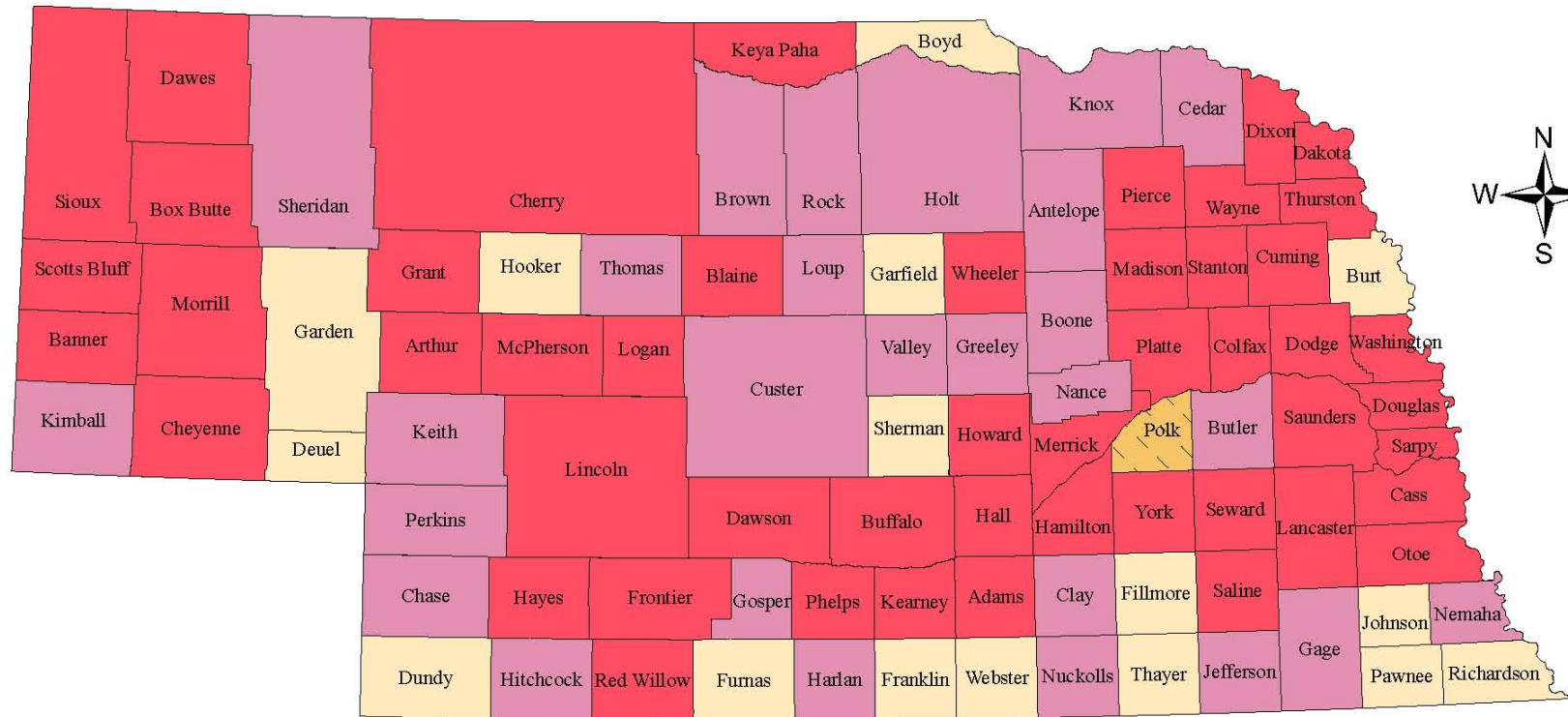
Percent Change for State: 6.7%



Comparison of Nebraska County Population Loss versus Other Midwest or Plains States: 2000-2010

<u>State</u>	<u>Pop. Loss Counties</u>		<u>Lost 10%+</u>
Nebraska	69 of 93	75%	23 or 25%
Kansas	77 of 105	73%	22 or 22%
Iowa	66 of 99	67%	5 or 5%
So. Dakota	41 of 66	62%	19 or 29%
Illinois	61 of 102	60%	5 or 5%
Indiana	29 of 92	32%	0 or 0%
Texas	79 of 254	31%	22 or 9%
Oklahoma	23 of 77	30%	4 or 5%
Colorado	17 of 63	27%	9 or 14%
Missouri	30 of 115	26%	1 or 1%
Wyoming	2 of 23	9%	0 or 0%

Natural Change (Births - Deaths) in Nebraska Counties: 1980s Decade compared to 2000s Decade



Natural Change during 1980-1989 (1980s) versus 2000-2009 (2000s)

(Natural Increase = Births > Deaths; Natural Loss = Deaths > Births)

- Natural Increase in Both 1980s and 2000s (49)
- Natural Increase in 1980s but Natural Loss in 2000s (27)
- Natural Loss in 1980s and Natural Change of Exactly 0 in 2000s (1)
- Natural Loss in Both 1980s and 2000s (16)

Source: Nebraska Vital Statistics Reports, Nebraska Department of Health and Human Services

Prepared by: David Drozd, Center for Public Affairs Research, University of Nebraska Omaha - November 23, 2010

Natural Change in Nebraska Areas by Decade

Area	1950-59	1960-69	1970-79	1980-89	1990-99	2000-09	1980s vs. 2000s
Nebraska total	201,518	147,199	97,436	108,744	84,612	109,478	734
Nat. Increase Counties	93	89	72	76	52	49	-27
Number @ 0	0	0	0	0	0	1	1
Nat. Decrease Counties	0	4	21	17	41	43	26
Metropolitan	92,091	94,118	66,306	73,992	71,490	92,001	18,009
Non-metropolitan	109,427	53,081	31,130	34,752	13,122	17,477	-17,275
Metro Core	77,202	76,900	49,176	53,857	52,306	69,241	15,384
Metro Outlying	14,889	17,218	17,130	20,135	19,184	22,760	2,625
Micro Core	41,119	26,735	20,752	20,802	15,080	18,451	-2,351
Micro Outlying	6,037	2,799	2,235	2,199	612	494	-1,705
Other, has city of 2500	31,619	14,154	6,346	8,761	1,042	1,841	-6,920
Other, no city of 2500	30,652	9,393	1,797	2,990	-3,612	-3,309	-6,299

Note: 77 of 93 Nebraska counties had a decline in natural change between the 1980s and the 2000s.



2000-2010 Changes for Nebraska's Congressional Districts

<u>District</u>	<u>2000</u>	<u>2010</u>	<u>Change</u>	<u>Percent Change</u>
NE-1 st	570,421	626,092	+ 55,671	+ 9.8%
NE-2 nd	570,421	638,871	+ 68,450	+ 12.0%
NE-3 rd	570,421	561,378	- 9,043	- 1.6%

Average district size based on 2010 census is 608,780

<u>District</u>	<u>VS. average</u>	<u>Effect of Redistricting</u>
NE-1 st	+17,312	Will gain territory from 2 nd district & lose territory to 3 rd district
NE-2 nd	+30,091	Has to lose territory and population
NE-3 rd	- 47,402	Has to gain territory and population



Nebraska Cities and Towns: Notable Facts

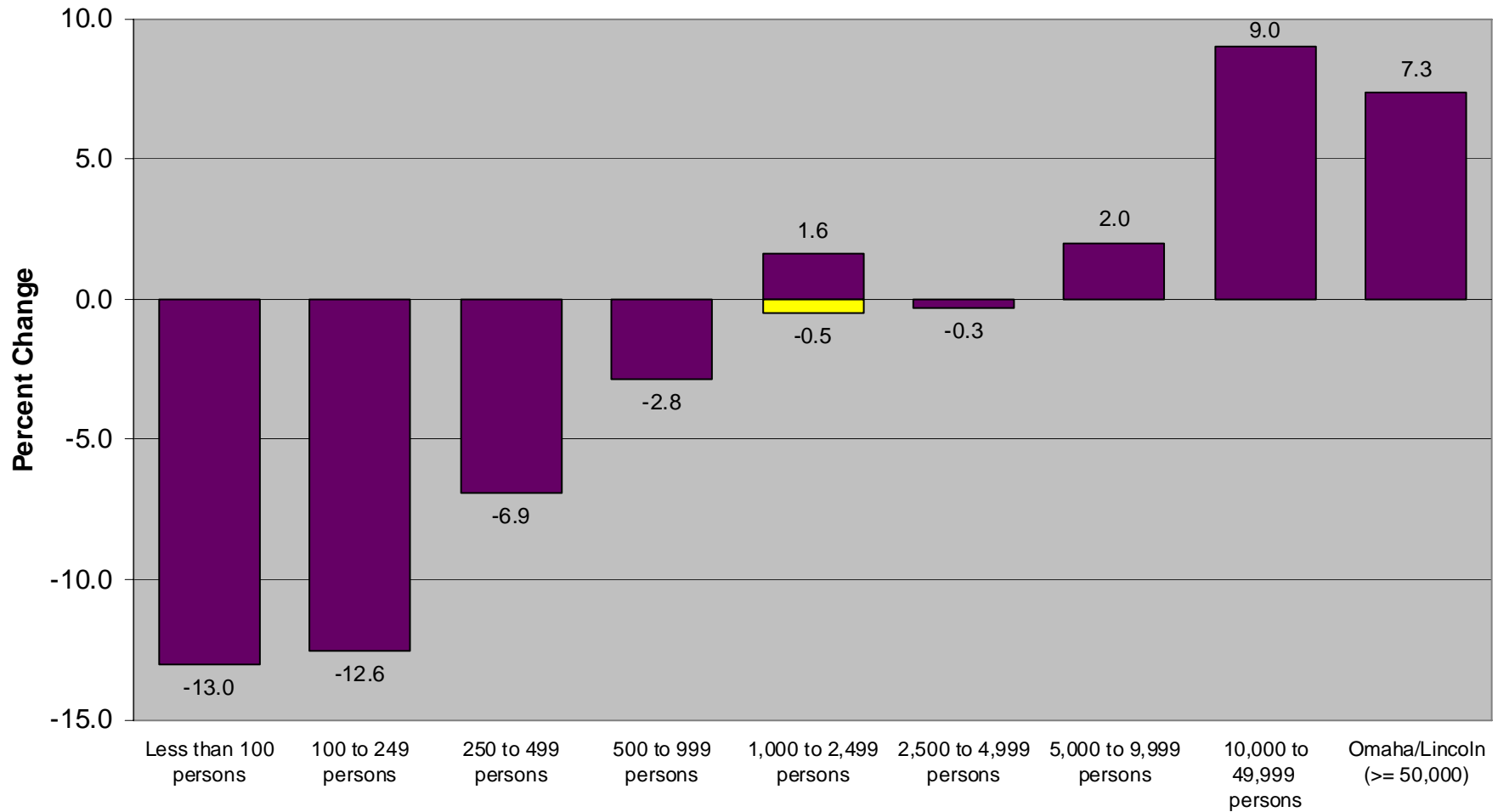
1. More than 200 communities lost more than 10% of their population in the 2000s – only 84 did so in the 1990s
2. The median size town in Nebraska in 2010 had 318 residents (Lodgepole and Scotia). Was 341 in 2000.
3. Monowi, NE in Boyd County had 1 resident in 2010 (peak population 123 in 1930); Gross, NE also in Boyd County had 2 residents in 2010 (peak of 325 in 1900)
4. The 2000 count in Hallam, NE was 276 persons and estimates indicated the town was growing before a tornado hit the community mid-decade – the 2010 count was 213 persons (down 23% since 2000)
5. Due to a large annexation of land, Terrytown in Scotts Bluff County was the state's 2nd fastest growing place (+85%). Gretna led the state's growth, increasing 89%



Ranking of Nebraska's Largest Cities: 2010

<u>City</u>	<u>County</u>	<u>Population</u>	<u>2000-10 % Ch.</u>
1. Omaha	Douglas	408,958	+ 4.9%
2. Lincoln	Lancaster	258,379	+ 14.5%
3. Bellevue	Sarpy	50,137	+ 13.0%
4. Grand Island	Hall	48,520	+ 13.0%
5. Kearney	Buffalo	30,787	+ 12.2%
6. Fremont	Dodge	26,397	+ 4.9%
7. Hastings	Adams	24,907	+ 3.5%
8. North Platte	Lincoln	24,733	+ 3.6%
9. Norfolk	Madison	24,210	+ 3.0%
10. Columbus	Platte	22,111	+ 5.4%
11. Papillion	Sarpy	18,894	+ 15.5%
12. La Vista	Sarpy	15,758	+ 34.7%

Percent Population Change for All Cities in Various City Size Categories: 2000 to 2010



Sources: 2000 and 2010 Censuses, U.S. Census Bureau

City Size Category (2000 Census)

Note: Without the large 89% growth in Gretna, the 1,000-2,499 category would be -0.5%.



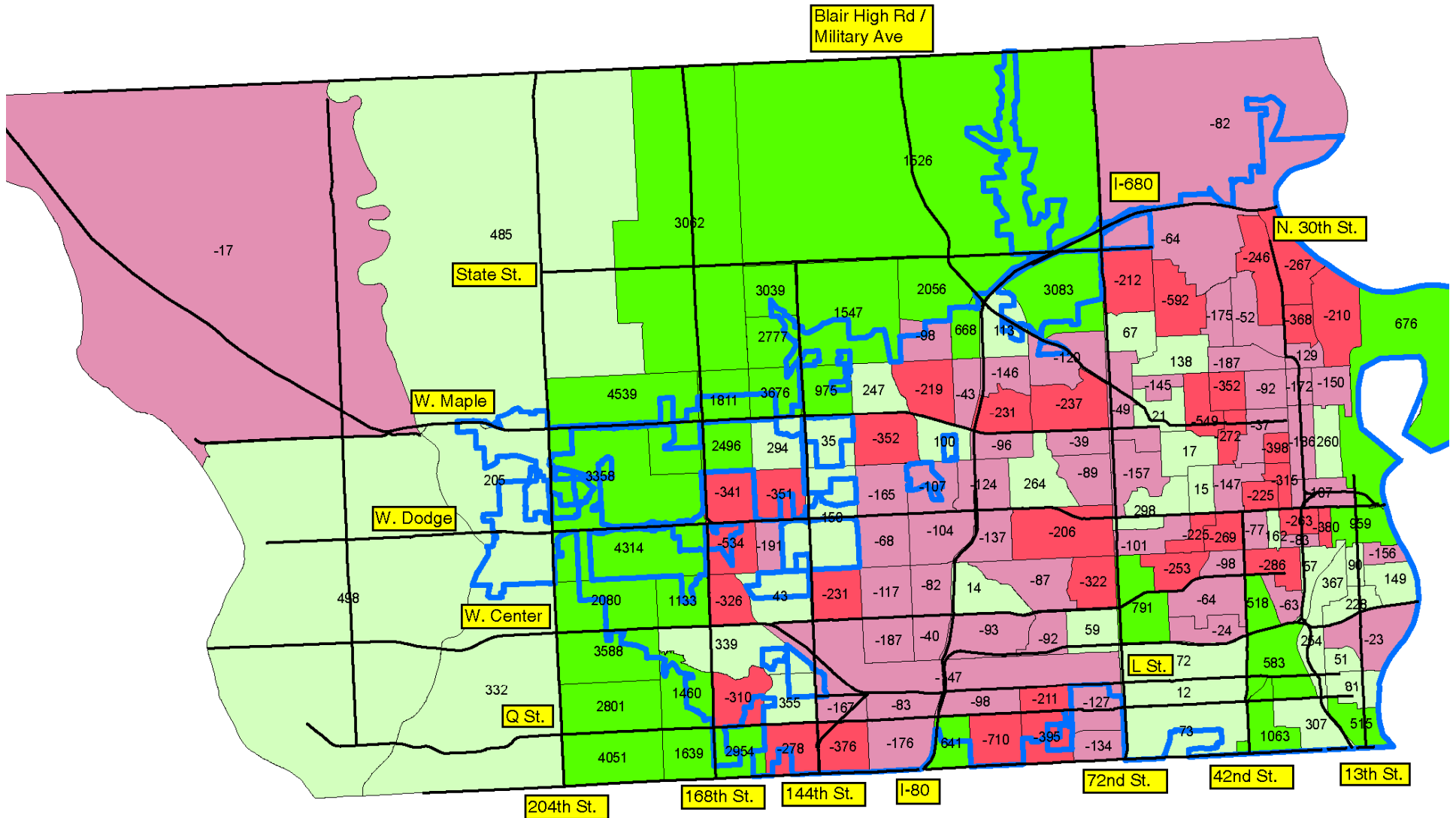
Simple Comparison of Changes in Various Nebraska Areas

- **Nebraska** + 6.7%
 - Incorporated areas + 5.2%
 - Unincorporated +11.9%
 - “Big 3” counties +44.3%
 - Rest of state - 4.1%
 - Douglas Co. West of 72nd St. +21.8%
 - Douglas Co. East of 72nd St. - 0.2%

United States[®]
Census
2010

UNIVERSITY OF
Nebraska
Omaha

Thematic Map Showing 2000-2010 Numeric Population Change for 2010-defined Douglas County Census Tracts

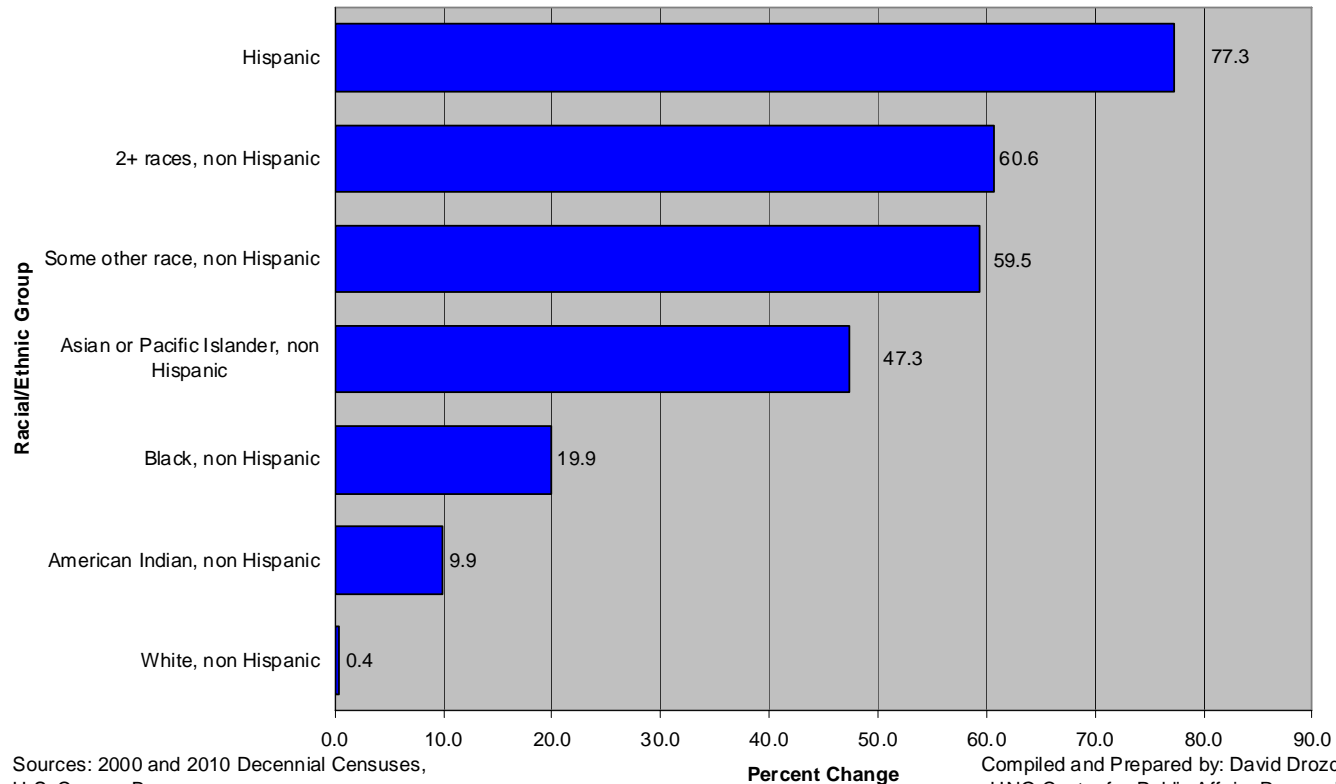


RED: Loss of 200 or more people (35 tracts)
 PINK: Loss of less than 200 people (54 tracts)
 LIGHT GREEN: Growth of less than 500 people (36 tracts)
 LIME GREEN: Growth of 500 or more people (31 tracts)
 Omaha city limit boundary shown in blue

Nebraska 2000-2010 Population Change by Race/Ethnicity

- Minority Racial/Ethnic groups grew at faster rates
 - Rates of increase in the 2000s were lower than in the 1990s

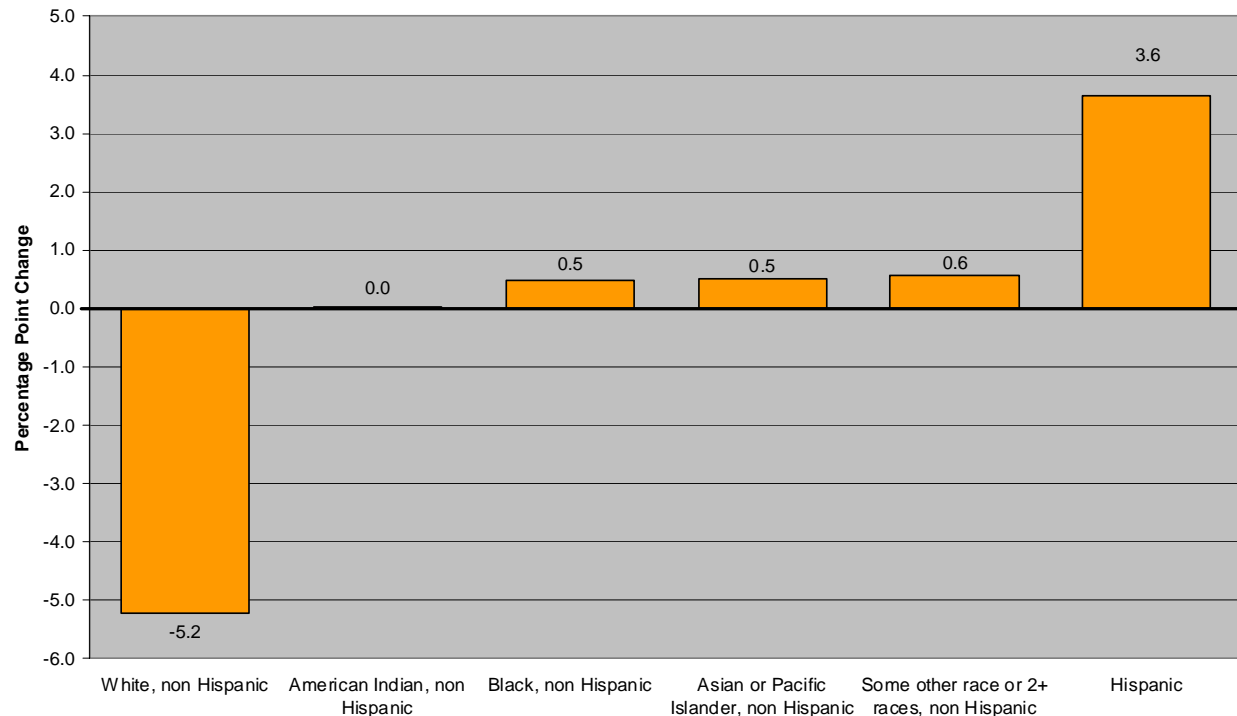
2000 to 2010 Nebraska Percent Change in Population by Race/Ethnicity
[Overall Nebraska 2000-10 Percent Change was 6.7 percent]



Nebraska Population by Race/Ethnicity

- Hispanics now comprise 9.2% of Nebraska's population (up 3.6 percentage points) while 82.1% is White and non Hispanic
 - Latter down 5.2 percentage points from 87.3% in 2000 (was 92.5% in 1990)

Percentage Point Change in the Distribution of the Nebraska Population: 2000 to 2010



Sources: 2000 and 2010 Decennial Censuses, U.S. Census Bureau

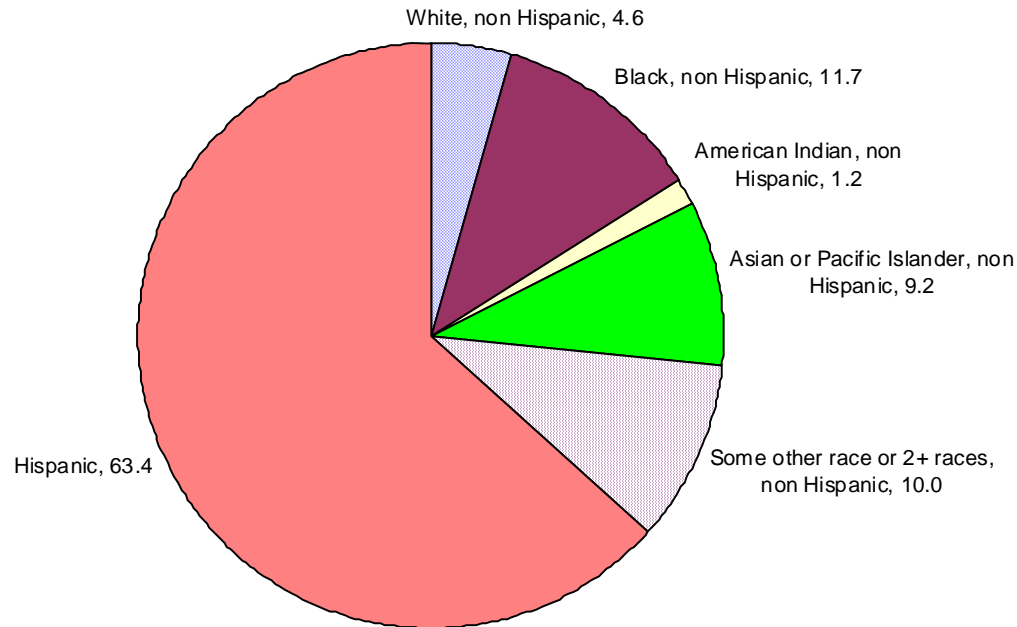
Racial or Ethnic Group

Compiled and Prepared by: David Drozd, UNO Center for Public Affairs Research

Contributions to Nebraska Growth during 2000-10 by Race/Ethnicity

- The largest share of Nebraska growth is attributable to increases in the Hispanic population
 - Other minority groups also contribute a sizeable portion of the state's growth
 - The White non Hispanic population increased only slightly

Percent Distribution of Nebraska 2000-2010 Growth by Race/Ethnicity
[Total 2000-2010 Growth was 115,078 persons]



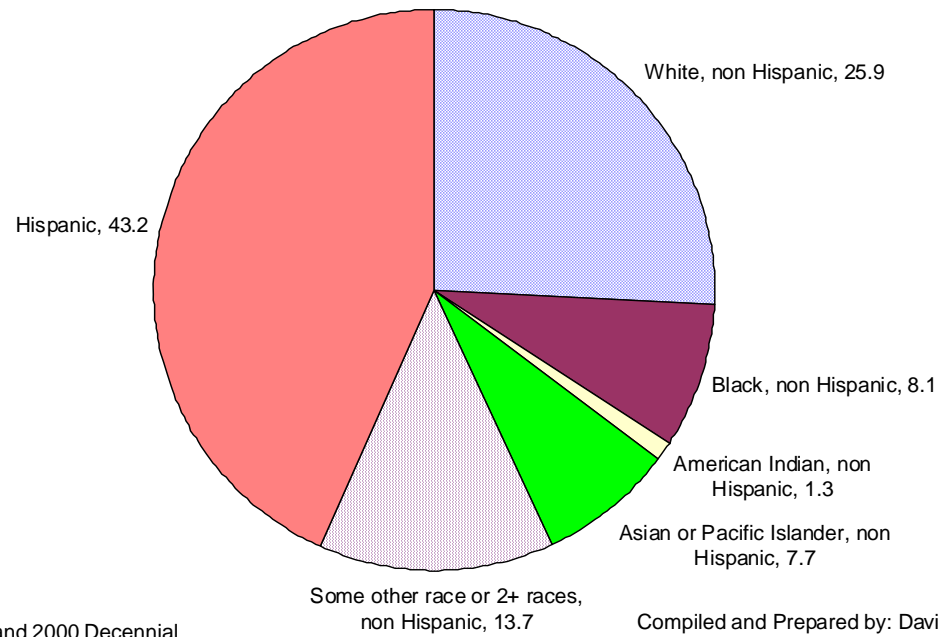
Sources: 2000 and 2010 Decennial
Censuses, U.S. Census Bureau

Compiled and Prepared by: David Drozd,
UNO Center for Public Affairs Research

Contributions to Nebraska Growth during 1990-00 by Race/Ethnicity

- The White non Hispanic population contributed a larger share of the state's growth in the 1990s than in the 2000s
 - Hispanics contributed the largest share of growth in the 1990s, but the 43 percent share was less than 63 percent portion during the 2000s decade

Percent Distribution of Nebraska 1990-2000 Growth by Race/Ethnicity
[Total 1990-2000 Growth was 132,878 persons]



Sources: 1990 and 2000 Decennial Censuses, U.S. Census Bureau

Compiled and Prepared by: David Drozd, UNO Center for Public Affairs Research



Comparison of County Growth: Majority vs. Minority Populations

- Definitions:

Majority population = White, non Hispanic

Minority population = non White or Hispanic

<u>Situation (# of Nebraska Counties)</u>	<u>1990s</u>	<u>2000s</u>
<u>Both</u> majority and minority population <u>grew</u>	23	11
Majority population declined <u>but</u> minority population grew	67	74
Majority population grew <u>but</u> minority population declined	0	2
<u>Both</u> majority and minority population <u>declined</u> (or 0 change)	3	6

Examples of Nebraska County Population Change by Race/Ethnicity: 2000-2010

Note: NH refers to non Hispanic

<u>Category</u>	<u>Hall</u>	<u>Dodge</u>	<u>Madison</u>
White, NH	- 2,281	- 1,990	- 2,060
Black, NH	747	38	91
American Indian, NH	99	43	- 33
Asian/Pac. Islander, NH	22	11	18
Other race/2+ races, NH	330	161	172
<u>Hispanic</u>	<u>6,156</u>	<u>2,268</u>	<u>1,462</u>
Full Population Change	5,073	531	- 350

Understanding Nebraska Population Change: Limited Age Data

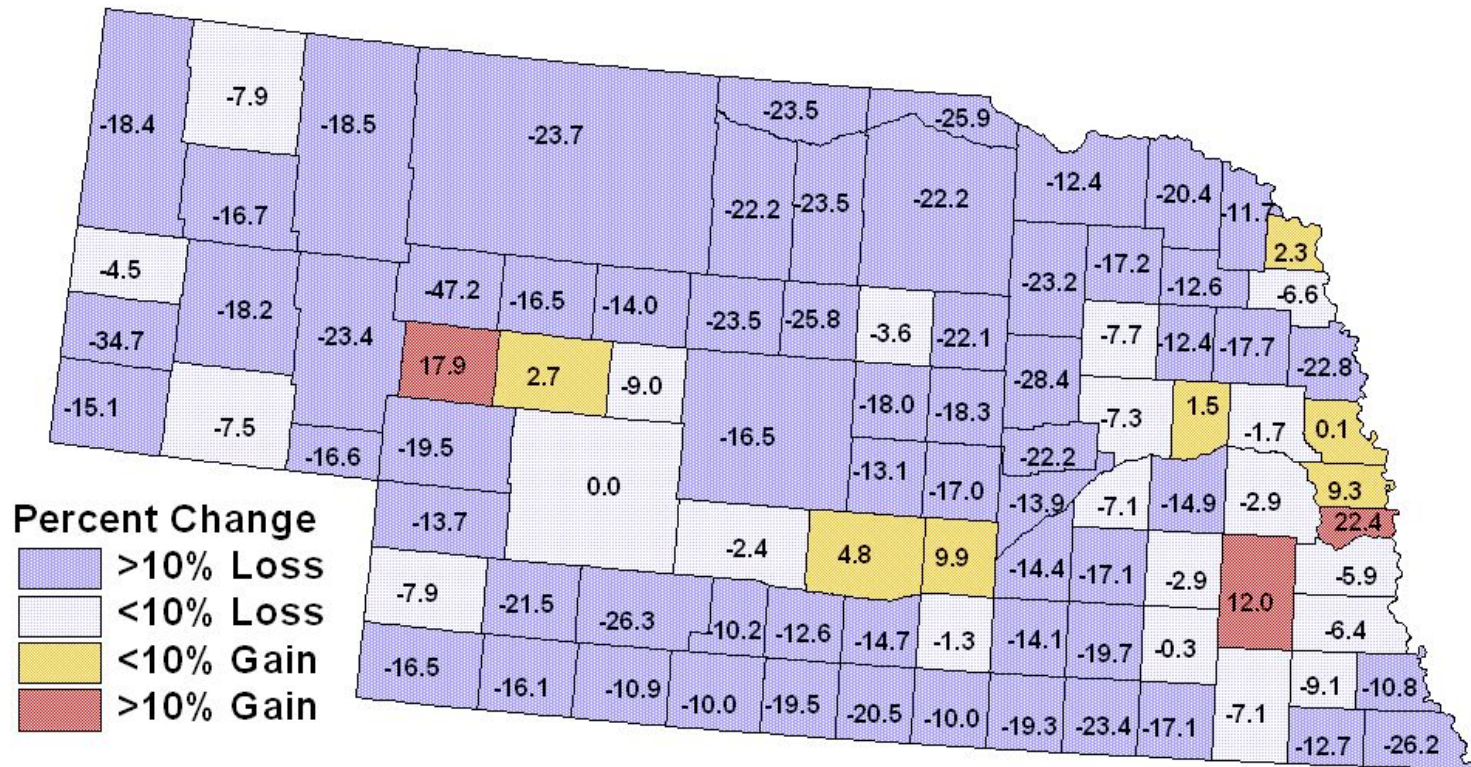
Nebraska Percent Change + 6.7%
Under Age 18 + 2.0%
Age 18+ + 8.4%

White non-Hispanic (WnH) + 0.4%
WnH Under Age 18 - 9.6%
WnH Age 18+ + 3.6%

Minority Population +50.7%
Minority Under Age 18 +54.0%
Minority Age 18+ +48.7%

White children decline nearly 10% while minority children increase faster than adults

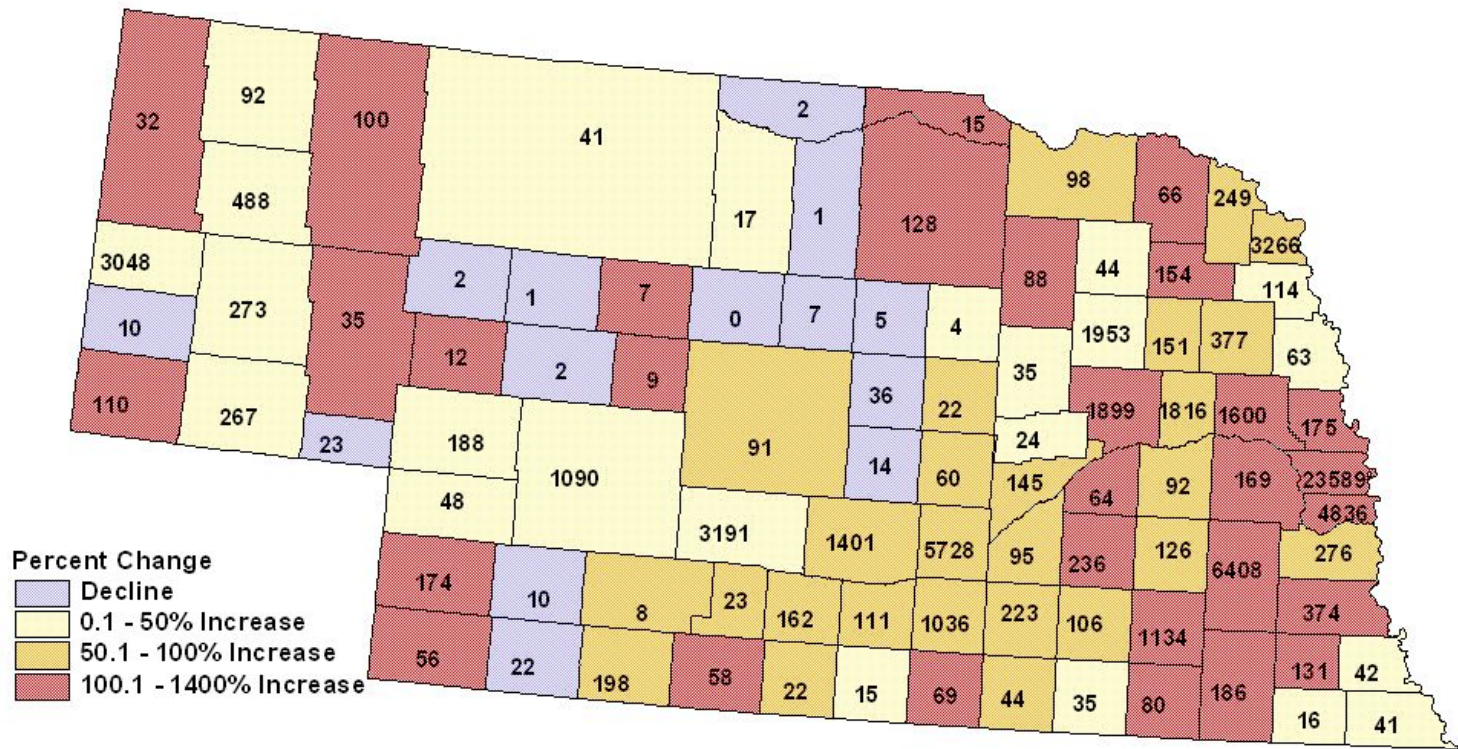
Change in the Population Age 17-Years and Younger: 2000 - 2010



Source: Bureau of the Census, 2010 Census of Population
 Nebraska change = 1.99%
 Numbers within counties = % loss or growth since 2000

Credit: Randy Cantrell, University of Nebraska Rural Initiative

Change in Hispanic/Latino Youth Population Nebraska: 2000 - 2010



Source: Bureau of the Census, 2010 Census of Population
 Nebraska change = 85.9%
 Numbers in counties = number of Latino youth

Credit: Randy Cantrell, University of Nebraska Rural Initiative



Understanding Hispanic Population Change in Nebraska: Last 2 decades

- The 1990 and 2000 Censuses counted 36,969 and 94,425 Hispanic/Latino.
 - Increase of 57,456 (155%)
 - 15,417 births - 1,419 deaths = 13,998 natural change
 - 57,456 – 13,998 = immigration of 43,458 (76% of increase)
 - Natural change rate = 21.3; Immigration rate = 66.1
- The 2010 Census counted 167,405 Hispanic/Latino.
 - Increase of 72,980 (77%) since 2000
 - 36,180 births - 2,337 deaths = 33,843 natural change
 - 72,980 – 33,843 = immigration of 39,137 (54% of increase)
 - Natural change rate = 25.9; Immigration rate = 29.9
- So more nat. change & lower net migration in 2000s